

Bulletin MSG30-8203-INST/UK

Visit our homepage  
for additional support  
[parker.com/pmde](http://parker.com/pmde)

# Installation and start-up information Hydraulic Motors Series F1

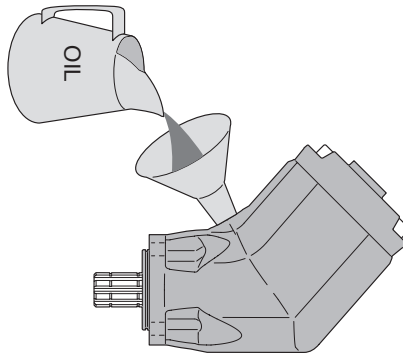
---

Effective: September, 2021  
Supersedes: September, 2018

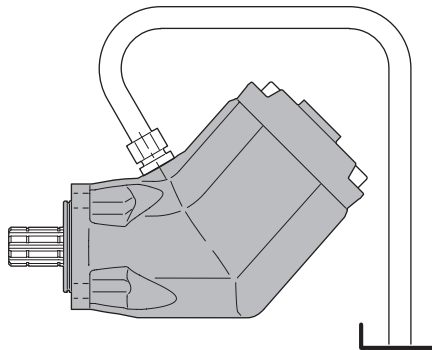


ENGINEERING YOUR SUCCESS.

<b>Important installation info.</b> Series F1 Motor (fixed displacement pumps)	<b>Wichtige Installationsinfo.</b> Serie F1 Motor (konst. Verdrängungsvolumen)	<b>Informations importantes pour l'installation</b> Séries F1 (cylindrées fixes)
--	--	---

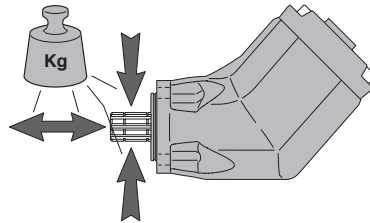


- |  |   |   |
|--|---|---|
| <b>1)</b> Always fill the motor (and the hydraulic system) with recommended oil before start-up. | <b>1)</b> Vor Inbetriebnahme ist das Motorgehäuse mit Öl zu füllen. | <b>1)</b> Remplir toujours le moteur (et le système hydraulique) avec une huile conforme aux recommandations, avant la mise en route. |
|--|---|---|

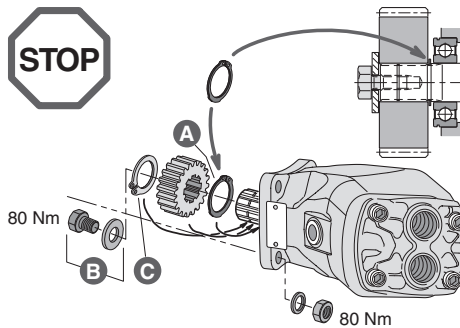


- |   |   |   |
|---|---|---|
| <b>2)</b> The motor drain port <b>must</b> be connected directly to tank.<br><b>NOTE:</b> When the motor is delivered, the port is protected with a plastic plug. | <b>2)</b> Eine Leckölleitung <b>muß</b> vom Hydr. Motor direkt zum Ölbehälter verlegt werden.<br><b>NB.</b> Bei Lieferung des Hydr. Motors ist der Leckölanschluss mit einem Plastikstopfen verschlossen. | <b>2)</b> L'orifice de drainage <b>doit être toujours</b> relié directement au réservoir.<br><b>NOTE:</b> A la livraison, l'orifice de drainage est obturé par un bouchon de protection en plastique. |
|---|---|---|

<b>Important installation info.</b> Series F1 Motor (fixed displacement pumps)	<b>Wichtige Installationsinfo.</b> Serie F1 Motor (konst. Verdrängungsvolumen)	<b>Informations importantes pour l'installation</b> Séries F1 (cylindrées fixes)
--	--	---



- |  |  |   |
|--|--|---|
| <p><b>3) If an axial and/or radial force will be acting on the shaft – <b>contact Parker Hannifin for information.</b></b></p> | <p><b>3) Bei auftretenden axialen und/oder radialen Wellenbelastungen <b>wenden Sie sich bitte an Parker Hannifin.</b></b></p> | <p><b>3) Si des efforts axiaux et/ou radiaux sont possibles sur l'arbre, <b>contacter Parker Hannifin pour plus d'informations.</b></b></p> |
|--|--|---|



**A and C** is not included with the pump. If needed it can be ordered on part number assembly kit 3781725. Part B is included with Gear and PTO.

**A und C** sind nicht im Lieferumfang der Pumpe enthalten. Bei Bedarf kann es unter der Bestellnummer 3781725 bestellt werden. Teil B wird mit Getriebe und PTO inbegriffen

**A et C** ne sont pas inclus avec la pompe. si nécessaire, il peut être commandé sur le kit de montage de référence 3781725. La partie B est incluse avec Gear et PTO

- |  |   |  |
|--|---|--|
| <p><b>4) If a separate gear is installed on the motor shaft (with outer snap-ring or screw and washer):</b></p> <ul style="list-style-type: none"> <li>- <b>A, the inner snapping, must be installed!</b></li> <li>- B, screw and washer (alternative to outer snapping).</li> <li>- C, outer snapping.</li> </ul> | <p><b>4) Bei separater Ritzelmontage auf die Motorwelle (mit äußeren Sicherungsring o. Schraube mit Scheibe):</b></p> <ul style="list-style-type: none"> <li>- <b>A, der innere Sicherungsring, muss montiert werden!</b></li> <li>- B, Schraube und Scheibe (Alternativ zum äußeren Sicherungsring).</li> <li>- C, der äußere Sicherungsring.</li> </ul> | <p><b>4) Si un pignon doit être monté sur l'arbre du moteur (avec circlips ou vis et rondelle)</b></p> <ul style="list-style-type: none"> <li>- <b>A, le circlips intérieur, doit être installé!</b></li> <li>- B, vis et rondelle (alternative au circlips extérieur).</li> <li>- C, circlips extérieur.</li> </ul> |
|--|---|--|

**Position notification regarding Machinery Directive 2006/42/EC:**

Products made by the Pump & Motor Division Europe (PMDE) of Parker Hannifin are excluded from the scope of the machinery directive following the "Cetop" Position Paper on the implementation of the Machinery Directive 2006/42/EC in the Fluid Power Industry.

All PMDE products are designed and manufactured considering the basic as well as the proven safety principles according to:

- ISO 13849-1:2015
- SS-EN ISO 4413:2010

so that the machines in which the products are incorporated meet the essential health and safety requirements.

Confirmations for components to be proven component, e. g. for validation of hydraulic systems, can only be provided after an analysis of the specific application, as the fact to be a proven component mainly depends on the specific application.

**Dr. Hans Haas**

General Manger

Pump &amp; Motor Division Europe

**WARNING – USER RESPONSIBILITY**

FAILURE OR IMPROPER SELECTION OR IMPROPER USE OF THE PRODUCTS DESCRIBED HEREIN OR RELATED ITEMS CAN CAUSE DEATH, PERSONAL INJURY AND PROPERTY DAMAGE.

This document and other information from Parker-Hannifin Corporation, its subsidiaries and authorized distributors provide product or system options for further investigation by users having technical expertise.

The user, through its own analysis and testing, is solely responsible for making the final selection of the system and components and assuring that all performance, endurance, maintenance, safety and warning requirements of the application are met. The user must analyze all aspects of the application, follow applicable industry standards, and follow the information concerning the product in the current product catalogue and in any other materials provided from Parker or its subsidiaries or authorized distributors.

To the extent that Parker or its subsidiaries or authorized distributors provide component or system options based upon data or specifications provided by the user, the user is responsible for determining that such data and specifications are suitable and sufficient for all applications and reasonably foreseeable uses of the components or systems.

**Offer of Sale**

Please contact your Parker representation for a detailed "Offer of Sale".

