

- **Three-piece cast iron construction**
High efficiency and long life in severe operating environments.
- **Low friction bushing**
Provides strength in heavy duty applications.
- **Balanced thrust plates**
Optimize pump efficiency.
- **Largest journal bearings available**
for high pressure and long life.



| Product Features | Description |
|---------------------------------|--|
| Pump type | Heavy-duty, cast iron, external gear |
| Mounting | SAE standard flanges |
| Ports | SAE split flanges and other types of threaded ports, see Specifications |
| Shaft style | SAE splined, keyed, and others, see Specifications |
| Maximum speed | 400 - 3000 rpm, see Specifications |
| Theoretical displacement | See Specifications 0.62 to 2.48 in ³ |
| Drive | Clockwise, counterclockwise, double. Direct drive with flexible coupling is recommended. Pumps subject to radial loads must be specified with an outboard bearing. Axial loading is not allowed. |
| Inlet pressure | 30 psia (15psig) maximum pressure / 5 in. Hg maximum vacuum at operating temperature |
| Outlet pressure | See Specifications |
| Hydraulic fluids | Mineral oil, fire resistant fluids: water-oil emulsions 60/40, MFB; water-glycol, HFC; phosphate-esters, HFD (FPM seals required) |

| Product Features | Description |
|---|---|
| Fluid viscosity | From 7.5 to 1600 cSt (50 to 7500 sus). Recommended 15 to 75 cSt. |
| Fluid temperature | Mineral oil with standard seals: 0°F to 180°F (-20°C to 80°C); Fire resistant fluids HFB, HFC: 0°F to 150°F (-20°C to 65°C) |
| Filtration | ISO 4406 code: <ul style="list-style-type: none"> • 19/16 at 2000 psi/140 bar • 17/14 at 3000 psi/210 bar • 15/12 at 4000 psi/275 bar |
| Direction of rotation (looking at the drive shaft) | CW, CCW, Bi-Rotational |
| Multiple pump assemblies | Up to 6 gear selections of the same model, even with different gear widths |
| Separate or common inlet capability | Common |

WARNING: This product can expose you to chemicals including lead or DEHP which are known to the state of California to cause cancer, birth defects, and other reproductive harm. www.p65warnings.ca.gov

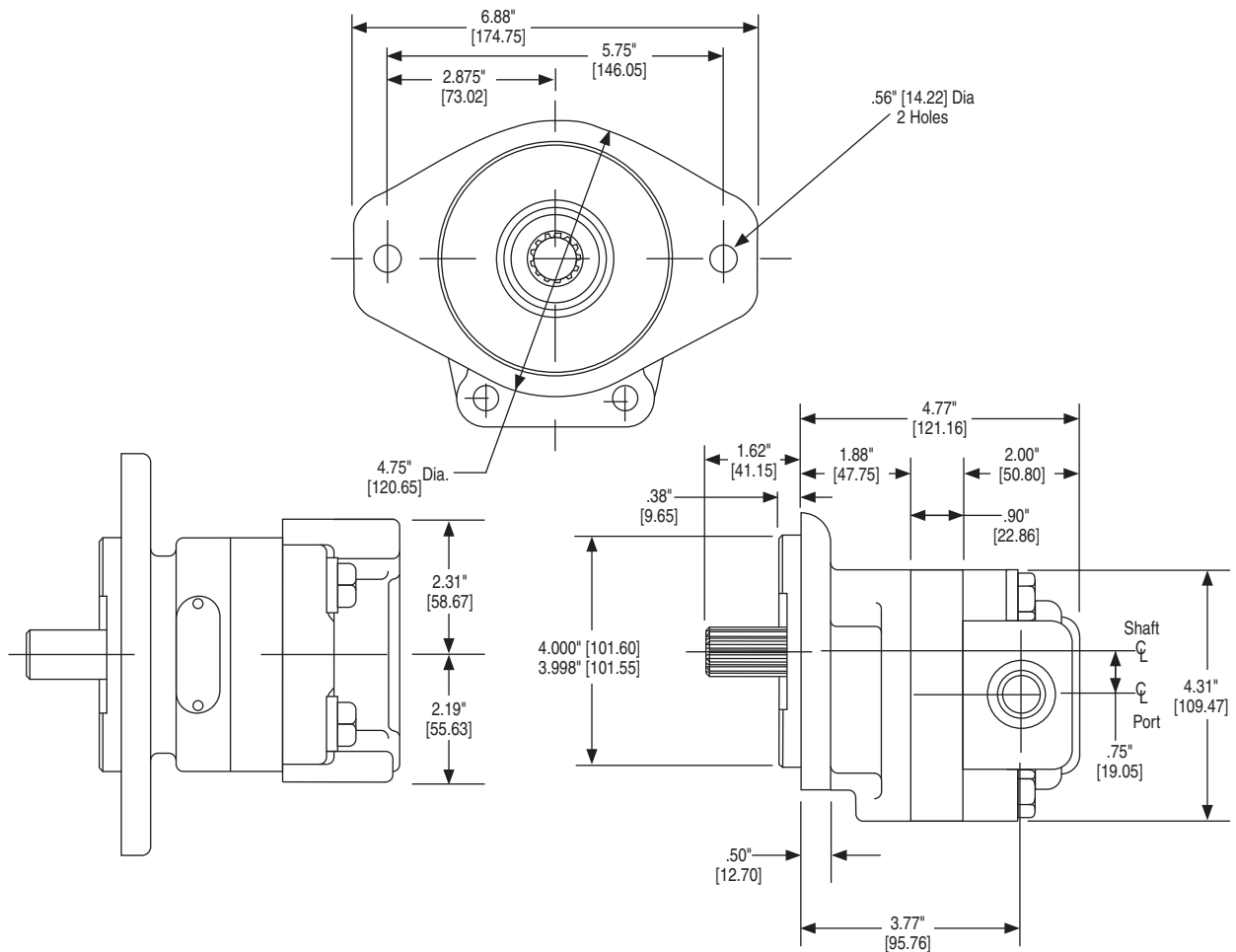
PGP/PGM315 Specifications/Dimensions

PGP/PGM315 Specifications

| PGP315 Frame Size | 05 | 07 | 10 | 12 | 15 | 17 | 20 |
|---|----------------|----------------|----------------|----------------|----------------|----------------|----------------|
| Displacement – cm ³ /rev (in ³ /rev) | 10.2 (0.62) | 15.2 (0.93) | 20.3 (1.24) | 25.4 (1.55) | 30.5 (1.86) | 35.6 (2.17) | 40.6 (2.48) |
| Max continuous pressure – bar (psi) | 241 (3,500) | 241 (3,500) | 241 (3,500) | 241 (3,500) | 228 (3,300) | 200 (2,900) | 172 (2,500) |
| Max Speed – RPM | 3,000 | 3,000 | 3,000 | 3,000 | 3,000 | 3,000 | 3,000 |
| Approximate Weight – Lbs. [kg] | 16.0 [7.2] | 17 [7.7] | 18 [8.2] | 19 [8.6] | 20 [9.1] | 21 [9.5] | 22 [10.0] |

| PGM315 Frame Size | 05 | 07 | 10 | 12 | 15 | 17 | 20 |
|---|----------------|----------------|----------------|----------------|----------------|----------------|----------------|
| Displacement – cm ³ /rev (in ³ /rev) | 10.2 (0.62) | 15.2 (0.93) | 20.3 (1.24) | 25.4 (1.55) | 30.5 (1.86) | 35.6 (2.17) | 40.6 (2.48) |
| Max continuous pressure – bar (psi) | 241 (3,500) | 241 (3,500) | 241 (3,500) | 241 (3,500) | 228 (3,300) | 200 (2,900) | 172 (2,500) |
| Max Speed – RPM | 3,000 | 3,000 | 3,000 | 3,000 | 3,000 | 3,000 | 3,000 |
| Approximate Weight – Lbs. [kg] | 16.0 [7.2] | 17 [7.7] | 18 [8.2] | 19 [8.6] | 20 [9.1] | 21 [9.5] | 22 [10.0] |

PGP/PGM315 Dimensions



WARNING: This product can expose you to chemicals including lead or DEHP which are known to the state of California to cause cancer, birth defects, and other reproductive harm. www.p65warnings.ca.gov

PGP315 Pump Performance Data

| Speed RPM | Output Flow | Gear Widths | | | | | | |
|-----------|-------------|-------------|------|------|--------|--------|--------|------|
| | Input Power | 1/2" | 3/4" | 1" | 1-1/4" | 1-1/2" | 1-3/4" | 2" |
| 900 | GPM | 2.0 | 3.2 | 4.4 | 5.5 | 6.7 | 7.9 | 9.0 |
| | LPM | 8 | 12 | 17 | 21 | 26 | 30 | 34 |
| | HP | 5 | 8 | 11 | 13 | 15 | 15 | 15 |
| | kW | 4 | 6 | 8 | 10 | 11 | 11 | 11 |
| 1200 | GPM | 2.8 | 4.4 | 6.0 | 7.6 | 9.2 | 10.7 | 12.2 |
| | LPM | 11 | 17 | 23 | 29 | 35 | 40 | 46 |
| | HP | 7 | 11 | 14 | 18 | 20 | 21 | 20 |
| | kW | 5 | 8 | 11 | 13 | 15 | 15 | 15 |
| 1500 | GPM | 3.6 | 5.6 | 7.7 | 9.6 | 11.6 | 13.5 | 15.4 |
| | LPM | 14 | 21 | 29 | 36 | 44 | 51 | 58 |
| | HP | 9 | 13 | 18 | 22 | 25 | 26 | 25 |
| | kW | 7 | 10 | 13 | 16 | 19 | 19 | 19 |
| 1800 | GPM | 4.4 | 6.8 | 9.3 | 11.6 | 14.0 | 16.3 | 18.6 |
| | LPM | 17 | 26 | 35 | 44 | 53 | 62 | 70 |
| | HP | 11 | 16 | 21 | 27 | 30 | 31 | 30 |
| | kW | 8 | 12 | 16 | 20 | 22 | 23 | 23 |
| 2100 | GPM | 5.2 | 8.1 | 10.9 | 13.6 | 16.4 | 19.1 | 21.8 |
| | LPM | 20 | 30 | 41 | 51 | 62 | 72 | 83 |
| | HP | 12 | 19 | 25 | 31 | 35 | 36 | 35 |
| | kW | 9 | 14 | 18 | 23 | 26 | 27 | 26 |
| 2400 | GPM | 6.0 | 9.3 | 12.5 | 15.6 | 18.8 | 21.9 | 25.1 |
| | LPM | 23 | 35 | 47 | 59 | 71 | 83 | 95 |
| | HP | 14 | 21 | 28 | 35 | 40 | 41 | 40 |
| | kW | 11 | 16 | 21 | 26 | 30 | 31 | 30 |
| 3000 | GPM | 7.7 | 11.7 | 15.7 | 19.6 | 23.7 | 27.6 | 31.5 |
| | LPM | 29 | 44 | 59 | 74 | 90 | 104 | 119 |
| | HP | 18 | 27 | 35 | 44 | 50 | 51 | 51 |
| | kW | 13 | 20 | 26 | 33 | 37 | 38 | 38 |

Performance data shown are the average results based on a series of laboratory tests of production units and are not necessarily representative of any one unit. Tests were run with the oil reservoir temperature at 120° F and viscosity 150 SUS at 100° F.


NOTE: Pump output flow is at the maximum rated pressure.

PGM315 Motor Performance Data

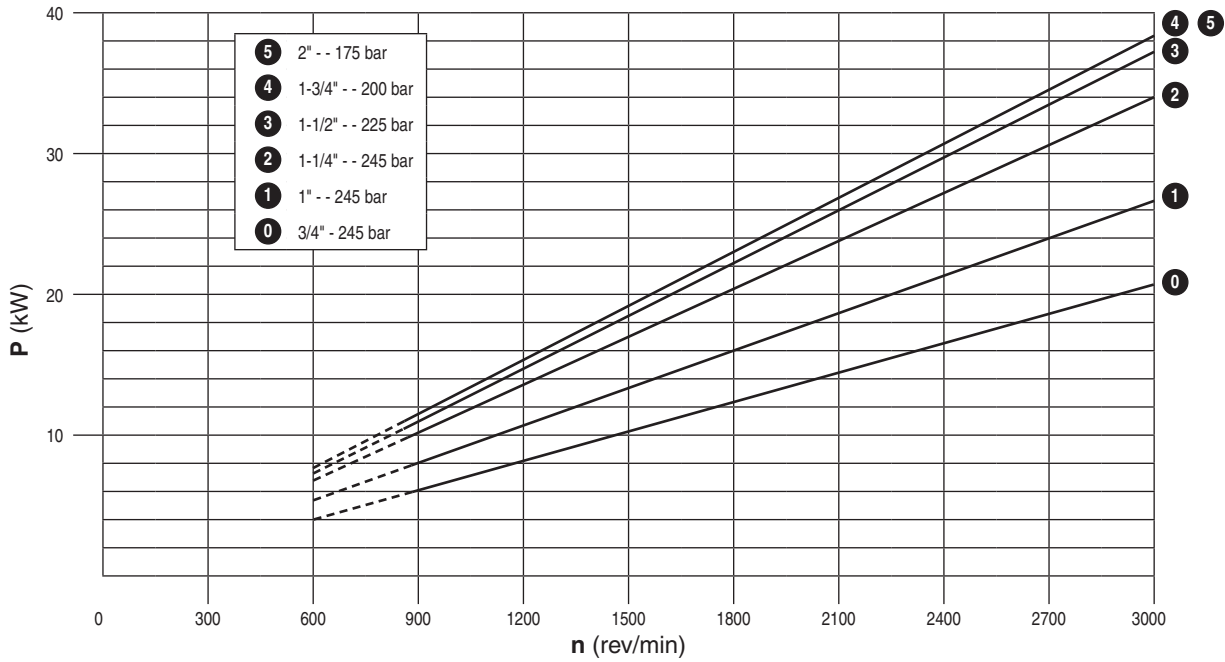
| Speed RPM | Output Torque | Gear Widths | | | | | | | | | |
|-----------|---------------|-------------|------|-----------------|------|-----------------|-------|-----------------|-------|-------------|-------|
| | | 1" 3500 psi | | 1-1/4" 3500 psi | | 1-1/2" 3300 psi | | 1-3/4" 2900 psi | | 2" 2500 psi | |
| | | A | B | A | B | A | B | A | B | A | B |
| 900 | in/lbs | 7.1 | 665 | 8.3 | 830 | 9.6 | 940 | 10.9 | 965 | 12.2 | 950 |
| | Nm | 27 | 75.1 | 32 | 93.8 | 37 | 106.2 | 41 | 109.0 | 46 | 107.3 |
| 1200 | in/lbs | 8.8 | 665 | 10.5 | 830 | 12.2 | 940 | 13.8 | 965 | 15.5 | 950 |
| | Nm | 33 | 75.1 | 40 | 93.8 | 46 | 106.2 | 52 | 109.0 | 59 | 107.3 |
| 1500 | in/lbs | 10.6 | 660 | 12.6 | 825 | 14.7 | 935 | 16.7 | 955 | 18.8 | 945 |
| | Nm | 40 | 74.6 | 48 | 93.2 | 56 | 105.6 | 63 | 107.9 | 71 | 106.8 |
| 1800 | in/lbs | 12.3 | 655 | 14.7 | 820 | 17.2 | 930 | 19.6 | 950 | 22.1 | 940 |
| | Nm | 46 | 74.0 | 56 | 92.6 | 65 | 105.1 | 74 | 107.3 | 84 | 106.2 |
| 2100 | in/lbs | 14.0 | 655 | 16.8 | 820 | 19.7 | 930 | 22.5 | 950 | 25.4 | 940 |
| | Nm | 53 | 74.0 | 64 | 92.6 | 75 | 105.1 | 85 | 107.3 | 96 | 106.2 |
| 2400 | in/lbs | 15.7 | 640 | 18.9 | 800 | 22.2 | 910 | 25.4 | 930 | 28.8 | 920 |
| | Nm | 59 | 72.3 | 72 | 90.4 | 84 | 102.8 | 96 | 105.1 | 109 | 103.9 |
| 3000 | in/lbs | 19.0 | 640 | 23.0 | 800 | 27.2 | 905 | 31.2 | 925 | 35.3 | 915 |
| | Nm | 72 | 72.3 | 87 | 90.4 | 103 | 102.3 | 118 | 104.5 | 134 | 103.4 |

A: Input Flow GPM/LPM; B: Output Torque IN/LBS/Nm

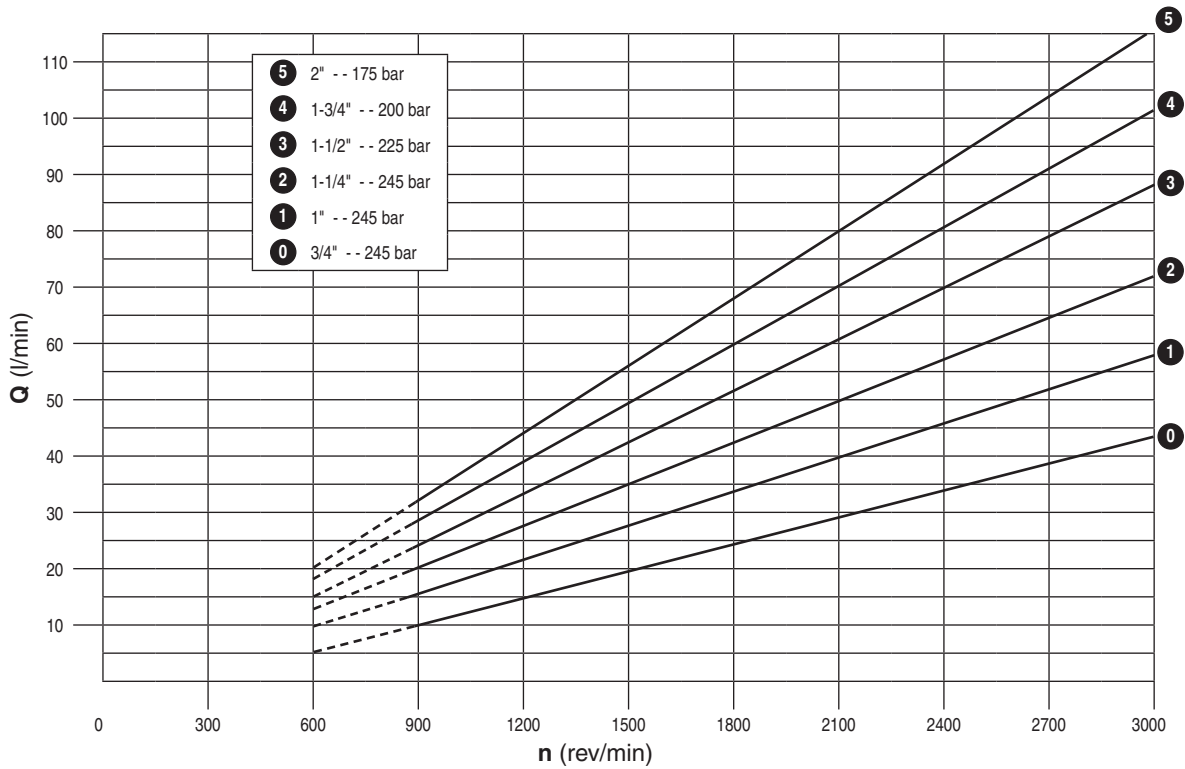
NOTE: In accordance with our policy of continuing product development, we reserve the right to change specifications shown in this catalog without notice.

 **WARNING:** This product can expose you to chemicals including lead or DEHP which are known to the state of California to cause cancer, birth defects, and other reproductive harm. www.p65warnings.ca.gov

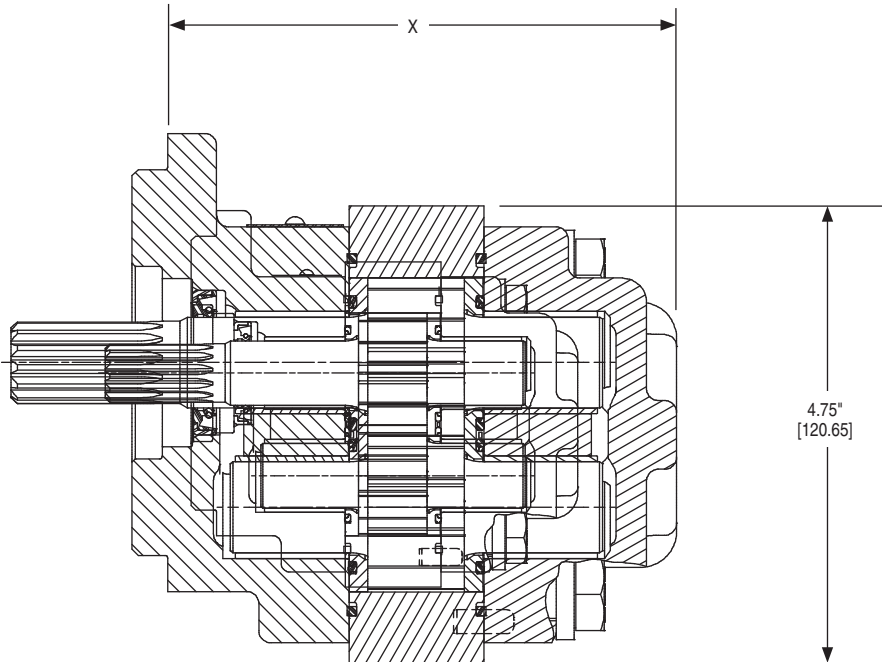
Input



Output

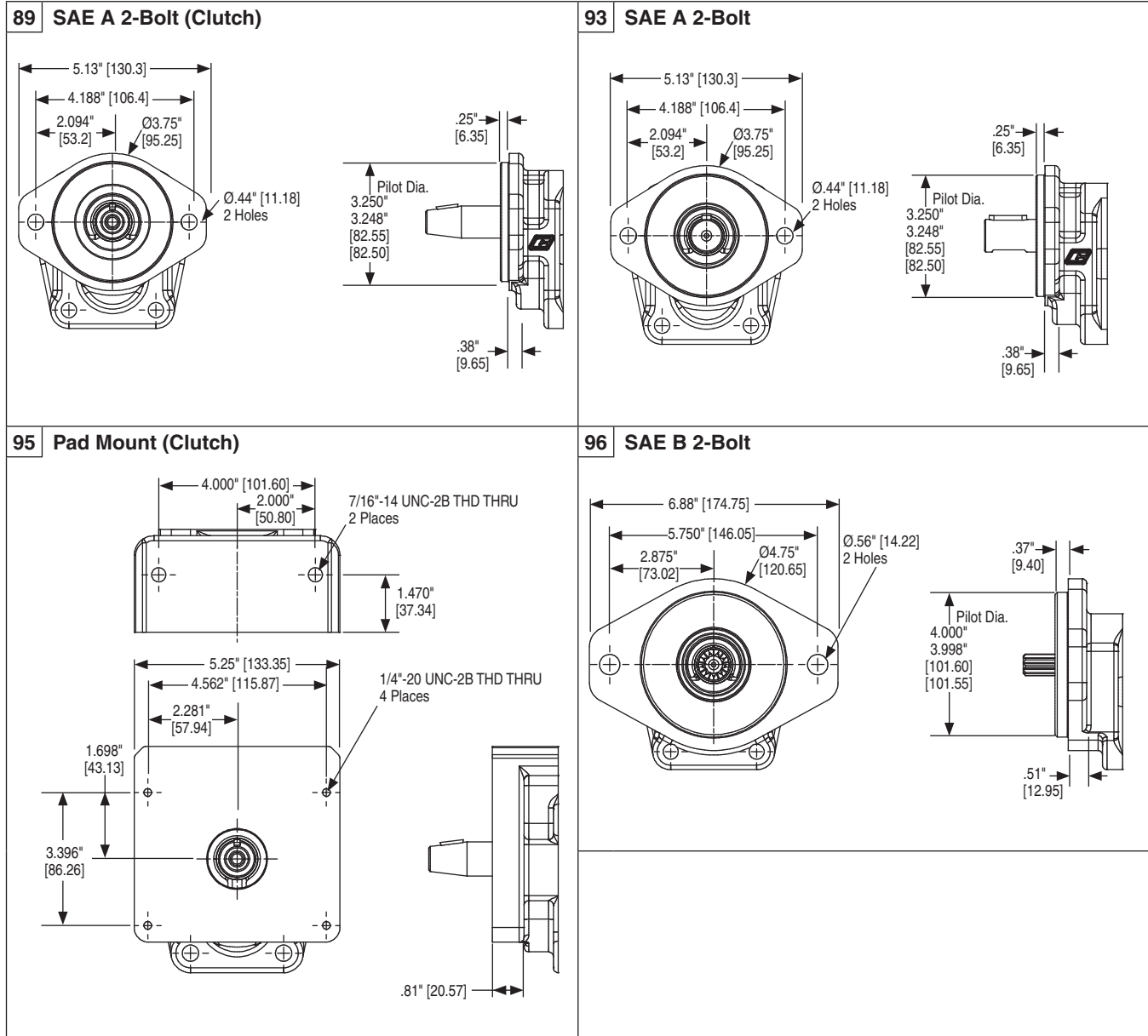


WARNING: This product can expose you to chemicals including lead or DEHP which are known to the state of California to cause cancer, birth defects, and other reproductive harm. www.p65warnings.ca.gov



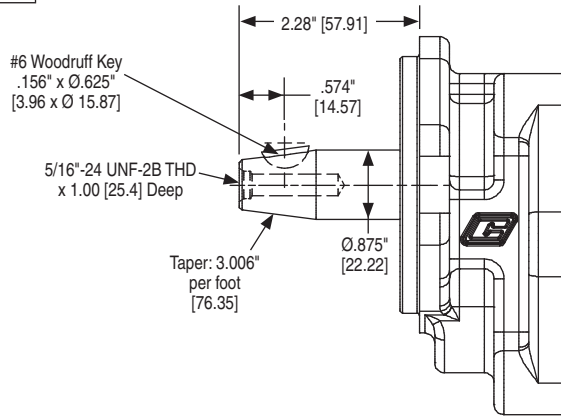
| X DIMENSION | | | | | | | |
|-------------|-------------------|-------------------|-------------------|-------------------|-------------------|-------------------|-------------------|
| Code | 05 | 07 | 10 | 12 | 15 | 17 | 20 |
| 89 | 4.78" [121.41] | 5.03" [127.76] | 5.28" [134.11] | 5.53" [140.46] | 5.78" [146.81] | 6.03" [153.16] | 6.28" [159.51] |
| 93 | 4.78" [121.41] | 5.03" [127.76] | 5.28" [134.11] | 5.53" [140.46] | 5.78" [146.81] | 6.03" [153.16] | 6.28" [159.51] |
| 95 | 5.52" [140.21] | 5.77" [146.56] | 6.02" [152.91] | 6.27" [159.26] | 6.52" [165.61] | 6.77" [171.96] | 7.02" [178.31] |
| 96 | 4.78" [121.41] | 5.03" [127.76] | 5.28" [134.11] | 5.53" [140.46] | 5.78" [146.81] | 6.03" [153.16] | 6.28" [159.51] |

WARNING: This product can expose you to chemicals including lead or DEHP which are known to the state of California to cause cancer, birth defects, and other reproductive harm. www.p65warnings.ca.gov

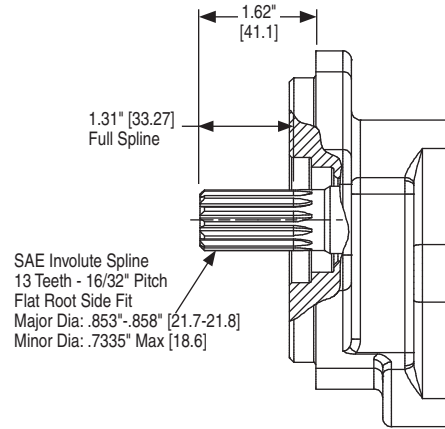


WARNING: This product can expose you to chemicals including lead or DEHP which are known to the state of California to cause cancer, birth defects, and other reproductive harm. www.p65warnings.ca.gov

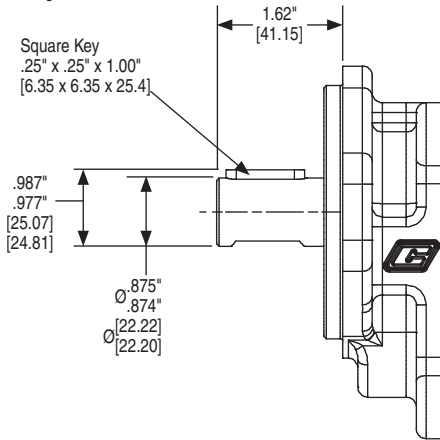
56 Clutch Shaft



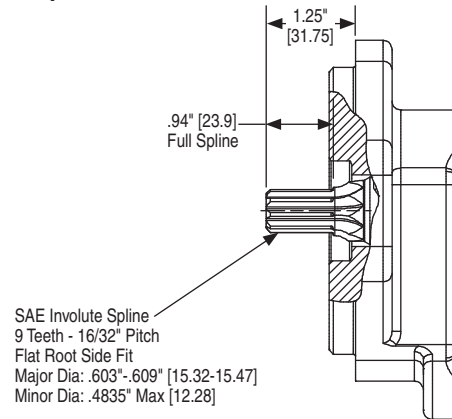
65 SAE B Spline



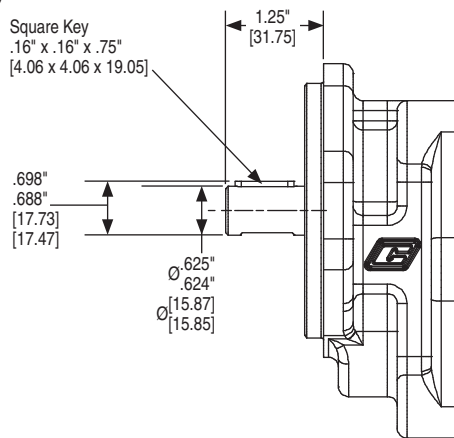
66 SAE B Keyed



96 SAE A Spline



97 SAE A Keyed



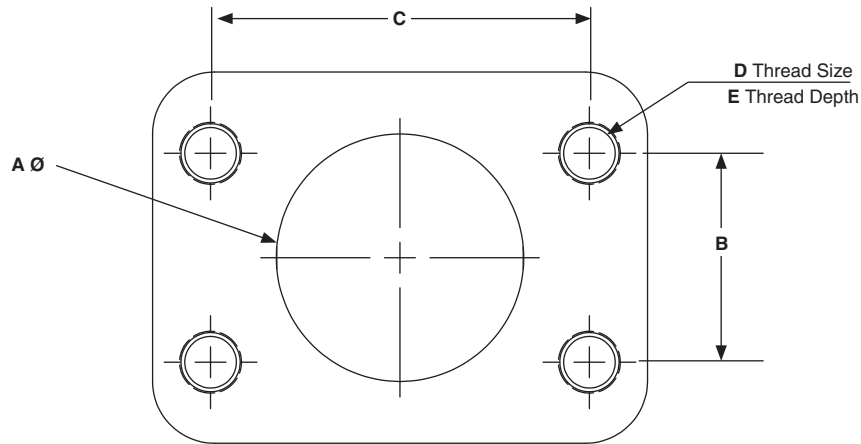
| Shaft Style | Integral: 1 2 pieces: 2 | Maximum Torque | | |
|------------------|----------------------------|----------------|-----|-----|
| | | lb-ft | Nm | |
| SAE A | Splined - 9 Teeth | 1 | 80 | 109 |
| | 5/8" Keyed | 2 | - | - |
| SAE B | Splined - 13 Teeth | 1 | 242 | 328 |
| | 7/8" Keyed | 2 | - | - |
| SAE BB | Splined - 15 Teeth | 1 | - | - |
| | 1" Keyed | 2 | - | - |
| SAE C | Splined - 14 Teeth | 1 | - | - |
| | 1.25" Keyed | 2 | - | - |
| Connecting Shaft | | | 90 | 122 |

Torque (lb-ft) = $\frac{\text{Pressure (PSI)} \times \text{Displacement (in}^3\text{/rev)}}{75.4}$
 Torque (Nm) = $\frac{\text{Pressure (Bar)} \times \text{Displacement (cc/rev)}}{62.8}$

WARNING: This product can expose you to chemicals including lead or DEHP which are known to the state of California to cause cancer, birth defects, and other reproductive harm. www.p65warnings.ca.gov

SAE Flanged Ports UNC Thread (SSS)

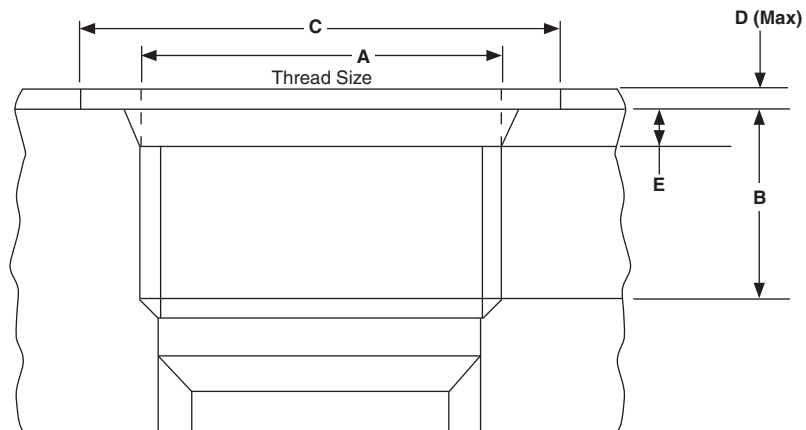
| A | | B | | C | | D | E | |
|------|------|------|------|------|------|----------|------|------|
| inch | mm | inch | mm | inch | mm | UNC | inch | mm |
| 0.50 | 12.7 | 0.69 | 17.5 | 1.50 | 38.1 | 5/16"-18 | 0.94 | 23.9 |
| 0.75 | 19.1 | 0.88 | 22.3 | 1.88 | 47.7 | 3/8"-16 | 0.88 | 22.4 |
| 1.00 | 25.4 | 1.03 | 26.2 | 2.06 | 52.2 | 3/8"-16 | 0.88 | 22.4 |
| 1.25 | 31.8 | 1.19 | 30.2 | 2.31 | 58.7 | 7/16"-14 | 1.12 | 28.4 |
| 1.50 | 38.1 | 1.41 | 35.7 | 2.75 | 69.9 | 1/2"-13 | 1.06 | 26.9 |
| 2.00 | 50.8 | 1.69 | 42.9 | 3.06 | 77.8 | 1/2"-13 | 1.06 | 26.9 |
| 2.50 | 63.5 | 2.00 | 50.8 | 3.50 | 88.9 | 1/2"-13 | 1.19 | 30.2 |



WARNING: This product can expose you to chemicals including lead or DEHP which are known to the state of California to cause cancer, birth defects, and other reproductive harm. www.p65warnings.ca.gov

SAE Straight Thread (ODT)

| ODT | A UNF | B | | C | | D | | E | |
|--------|------------|------|------|------|------|------|-----|------|------|
| | | inch | mm | inch | mm | inch | mm | inch | mm |
| 1/2" | 3/4"-16 | .56 | 14.3 | 1.19 | 30.2 | .09 | 2.4 | .10 | 2.55 |
| 5/8" | 7/8"-14 | .66 | 16.7 | 1.34 | 34.1 | .09 | 2.4 | .10 | 2.55 |
| 3/4" | 1-1/16"-12 | .75 | 19.1 | 1.62 | 41.3 | .09 | 2.4 | .13 | 3.30 |
| 1" | 1-5/16"-12 | .75 | 19.1 | 1.91 | 48.5 | .09 | 2.4 | .13 | 3.30 |
| 1-1/4" | 1-5/8"-12 | .75 | 19.1 | 2.27 | 57.7 | .09 | 2.4 | .13 | 3.35 |
| 1-1/2" | 1-7/8"-12 | .75 | 19.1 | 2.56 | 65.0 | .09 | 2.4 | .13 | 3.35 |
| 2" | 2-1/2"-12 | .75 | 19.1 | 3.48 | 88.4 | .09 | 2.4 | .13 | 3.35 |



WARNING: This product can expose you to chemicals including lead or DEHP which are known to the state of California to cause cancer, birth defects, and other reproductive harm. www.p65warnings.ca.gov

Tandem: Repeat if Necessary

| | | | | | | | | | | | | | | | | | | | | | | |
|----|---|-----|---|---|---|---|---|---|---|---|---|---|---|---|---|---|---|---|---|---|---|----|
| PG | 1 | 315 | 2 | 3 | 3 | 4 | 4 | 5 | 5 | 6 | 6 | 7 | 7 | 8 | 8 | 9 | 9 | 6 | 6 | 7 | 7 | 10 |
|----|---|-----|---|---|---|---|---|---|---|---|---|---|---|---|---|---|---|---|---|---|---|----|

| Code | 1 – Type |
|------|------------------------------------|
| P | Pump (PE for fluoro-carbon seals) |
| M | Motor (no tandem motors available) |

| Code | 2 – Unit |
|------|---------------------------|
| A | Single Unit |
| B | Tandem Unit (flush studs) |
| L | Unit with Extended Studs |

| Code | 3 – Shaft End Cover |
|------|---|
| 1 | Pump, cw w/o O.B. bearing |
| 2 | Pump, ccw w/o O.B. bearing |
| 9 | Motor, bi-rot w/o O.B. bearing + 1/4" ODT drain |

| Code | 4 – Shaft End Cover |
|------|-----------------------|
| 89 | SAE 2-Bolt for clutch |
| 93 | SAE A 2-Bolt |
| 95 | Pad Mount for clutch |
| 96 | SAE B 2-Bolt |

| Code | 5 – Port End Cover | | |
|---------------------------------|--------------------|----------|------|
| SIDE PORTED | | | |
| CW | CCW | IN | OUT |
| SAE Split Flange (pump) | | | |
| EJ | JE | 1" | 3/4" |
| EK | KE | 1" | 1/2" |
| EL | LE | 3/4" | 3/4" |
| EM | ME | 3/4" | 1/2" |
| OE | EO | 1" | - |
| OF | FO | 3/4" | - |
| OJ | JO | - | 3/4" |
| OL | LO | - | 1/2" |
| SAE Split Flange (motor) | | | |
| DR-Double | | 1" | 1" |
| DS-Double | | 3/4" | 3/4" |
| Unported (pump) | | | |
| BI | | Unported | |

| Code | 5 – Port End Cover (cont.) | | |
|--------------------------------|----------------------------|--------|------|
| SIDE PORTED (cont.) | | | |
| CW | CCW | IN | OUT |
| OD Tube Porting (pump) | | | |
| FB | BF | 1-1/4" | 1" |
| FC | CF | 1-1/4" | 7/8" |
| FG | GF | 1-1/4" | 3/4" |
| FJ | JF | 1-1/4" | 5/8" |
| FL | LF | 1" | 1" |
| FV | VF | 1" | 7/8" |
| FW | WF | 1" | 3/4" |
| FX | XF | 1" | 5/8" |
| FY | YF | 7/8" | 7/8" |
| FZ | ZF | 7/8" | 3/4" |
| BC | CB | 7/8" | 5/8" |
| BG | GB | 7/8" | 1/2" |
| BJ | JB | 3/4" | 3/4" |
| BL | LB | 3/4" | 5/8" |
| BN | NB | 3/4" | 1/2" |
| BV | VB | 1-1/4" | - |
| BW | WB | 1" | - |
| BX | XB | 7/8" | - |
| BY | YB | 3/4" | - |
| BZ | ZB | - | 1" |
| PD | DP | - | 7/8" |
| PE | EP | - | 3/4" |
| PM | MP | - | 5/8" |
| PN | NP | - | 1/2" |
| OD TUBE PORTING (motor) | | | |
| VN-Double | | 1" | 1" |
| VR-Double | | 3/4" | 3/4" |
| VQ-Double | | 1/2" | 1/2" |

| Code | 5 – Port End Cover (cont.) | | |
|-------------------------------------|----------------------------|--------|------|
| REAR PORTED | | | |
| CW | CCW | IN | OUT |
| OD Tube Porting (pump) | | | |
| UC | CU | 1-1/4" | 1" |
| UF | FU | 1-1/4" | 7/8" |
| UN | NU | 1-1/4" | 3/4" |
| UD | DU | 1" | 1" |
| UP | PU | 1" | 7/8" |
| UQ | QU | 1" | 3/4" |
| UR | RU | 1" | 5/8" |
| LN | NL | 7/8" | 7/8" |
| LP | PL | 7/8" | 3/4" |
| LQ | QL | 7/8" | 5/8" |
| LR | RL | 3/4" | 3/4" |
| LS | SL | 3/4" | 5/8" |
| LT | TL | 3/4" | 1/2" |
| OD Tube Porting (motor) | | | |
| RN-Double | | 1" | 1" |
| RQ-Double | | 3/4" | 3/4" |
| RS-Double | | 1/2" | 1/2" |
| BSP Porting (motor) | | | |
| RT-Double | | 1" | 1" |
| RV-Double | | 3/4" | 3/4" |
| RW-Double | | 1/2" | 1/2" |
| National Pipe Thread (motor) | | | |
| RX-Double | | 1" | 1" |
| RY-Double | | 3/4" | 3/4" |
| RZ-Double | | 1/2" | 1/2" |

| Code | 6 – Gear Housing |
|------|------------------|
| AB | Pump |
| EB | Motor |

WARNING: This product can expose you to chemicals including lead or DEHP which are known to the state of California to cause cancer, birth defects, and other reproductive harm. www.p65warnings.ca.gov

Tandem: Repeat if Necessary

| | | | | | | | | | | | | | | | | | | | | | | |
|----|---|-----|---|---|---|---|---|---|---|---|---|---|---|---|---|---|---|---|---|---|---|----|
| PG | 1 | 315 | 2 | 3 | 3 | 4 | 4 | 5 | 5 | 6 | 6 | 7 | 7 | 8 | 8 | 9 | 9 | 6 | 6 | 7 | 7 | 10 |
|----|---|-----|---|---|---|---|---|---|---|---|---|---|---|---|---|---|---|---|---|---|---|----|

| Code | 7 – Gear Width | | | | |
|------|----------------|------------------------|-----------------------|--------------|-----|
| | Gear Width | in. ³ /rev. | cm ³ /rev. | Max Pressure | |
| | | | | psi | bar |
| 05 | 1/2" | .62 | 10.2 | 3500 | 241 |
| 07 | 3/4" | .93 | 15.2 | 3500 | 241 |
| 10 | 1" | 1.24 | 20.3 | 3500 | 241 |
| 12 | 1-1/4" | 1.55 | 25.4 | 3500 | 241 |
| 15 | 1-1/2" | 1.86 | 30.5 | 3300 | 228 |
| 17 | 1-3/4" | 2.17 | 35.6 | 2900 | 200 |
| 20 | 2" | 2.48 | 40.6 | 2500 | 172 |

| Code | 8 – Drive Shaft |
|------|---|
| 56 | Clutch Pump Tapered, 5/16 - 24 thd. (internal), #6 Woodruff Keyed (single unit only); 1:4 taper |
| 65 | SAE B Splined |
| 66 | SAE B Keyed |
| 96 | SAE A Splined |
| 97 | SAE A Keyed |

For Single or Tandem Units - unless noted

| Code | 9 – Bearing Carriers | | | | |
|--|----------------------|--------|------|------|--|
| DUAL OUTLET - PUMP ONLY | | | | | |
| Outlets: for clockwise porting the top port number comes first; for counter-clockwise porting the bottom port number comes first | | | | | |
| CW | CCW | IN | OUT | | |
| SAE Split Flange | | | | | |
| CA | AC | 1-1/4" | 3/4" | 3/4" | |
| DA | AD | 1-1/4" | 3/4" | 1/2" | |
| EA | AE | 1-1/4" | 1/2" | 1/2" | |
| FA | AF | 1" | 3/4" | 3/4" | |
| GA | AG | 1" | 3/4" | 1/2" | |
| HA | AH | 1" | 1/2" | 1/2" | |
| OD Tube Porting | | | | | |
| JG | GJ | 1-1/2" | 1" | 1" | |
| KG | GK | 1-1/2" | 1" | 7/8" | |
| LG | GL | 1-1/2" | 7/8" | 7/8" | |
| MG | GM | 1-1/2" | 1" | 3/4" | |
| NG | GN | 1-1/2" | 3/4" | 3/4" | |
| PG | GP | 1-1/4" | 1" | 1" | |
| QG | GQ | 1-1/4" | 1" | 7/8" | |
| RG | GR | 1-1/4" | 7/8" | 7/8" | |
| SG | GS | 1-1/4" | 1" | 3/4" | |
| TG | GT | 1-1/4" | 3/4" | 3/4" | |
| UG | GU | 1-1/4" | 3/4" | 5/8" | |
| VG | GV | 1-1/4" | 3/4" | 1/2" | |
| WG | GW | 1-1/4" | 5/8" | 5/8" | |
| XG | GX | 1-1/4" | 1/2" | 1/2" | |
| YG | GY | 1" | 1" | 1" | |
| ZG | GZ | 1" | 1" | 7/8" | |
| RC | CR | 1" | 7/8" | 7/8" | |
| SC | CS | 1" | 1" | 3/4" | |
| TC | CT | 1" | 3/4" | 3/4" | |
| VC | CV | 1" | 3/4" | 5/8" | |
| WC | CW | 1" | 3/4" | 1/2" | |
| XC | CX | 1" | 5/8" | 5/8" | |
| YC | CY | 1" | 1/2" | 1/2" | |

| Code | 9 – Bearing Carriers (cont.) | | | |
|----------------------------------|------------------------------|----------|--------|--|
| SINGLE OUTLET - PUMP ONLY | | | | |
| Outlet for front section | | | | |
| CW | CCW | IN | OUT | |
| SAE Split Flange | | | | |
| CJ | JC | 1-1/4" | 1-1/4" | |
| CL | LC | 1-1/4" | 1" | |
| CM | MC | 1-1/4" | 3/4" | |
| HB | BH | 1-1/4" | 1/2" | |
| HC | CH | 1" | 1" | |
| HF | FH | 1" | 3/4" | |
| HL | LH | 1" | 1/2" | |
| HM | MH | 3/4" | 3/4" | |
| HN | NH | 3/4" | 1/2" | |
| OD Tube Porting | | | | |
| KB | BK | 1-1/2" | 1-1/2" | |
| KC | CK | 1-1/2" | 1-1/4" | |
| KF | FK | 1-1/2" | 1" | |
| KL | LK | 1-1/2" | 7/8" | |
| KM | MK | 1-1/2" | 3/4" | |
| KN | NK | 1-1/4" | 1-1/4" | |
| KO | OK | 1-1/4" | 1" | |
| KP | PK | 1-1/4" | 7/8" | |
| KQ | QK | 1-1/4" | 3/4" | |
| MB | BM | 1-1/4" | 5/8" | |
| ML | LM | 1-1/4" | 1/2" | |
| MN | NM | 1" | 1" | |
| MQ | QM | 1" | 7/8" | |
| MR | RM | 1" | 3/4" | |
| MS | SM | 1" | 5/8" | |
| MT | TM | 1" | 1/2" | |
| MU | UM | 3/4" | 3/4" | |
| MV | VM | 3/4" | 5/8" | |
| MW | WM | 3/4" | 1/2" | |
| Common Inlet Passage | | | | |
| C | D | No Ports | | |

| Code | 10 – Connecting Shaft |
|------|-----------------------|
| 1 | Connecting Shaft |

For connecting tandem units

WARNING: This product can expose you to chemicals including lead or DEHP which are known to the state of California to cause cancer, birth defects, and other reproductive harm. www.p65warnings.ca.gov