

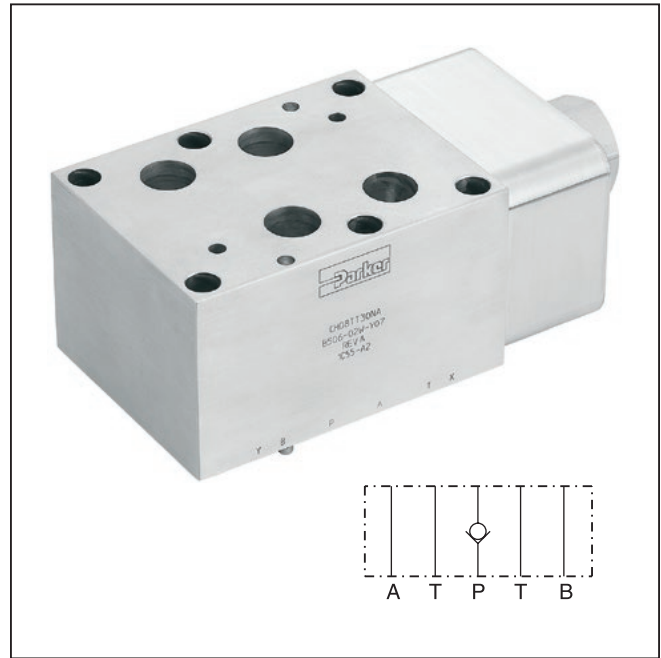
Parker CH Series Check Sandwich Valve Service Manual

General Description

Series CH check valves provide free flow in one direction and blocked flow in the reverse direction. The check can be located in the P port or in the T port.

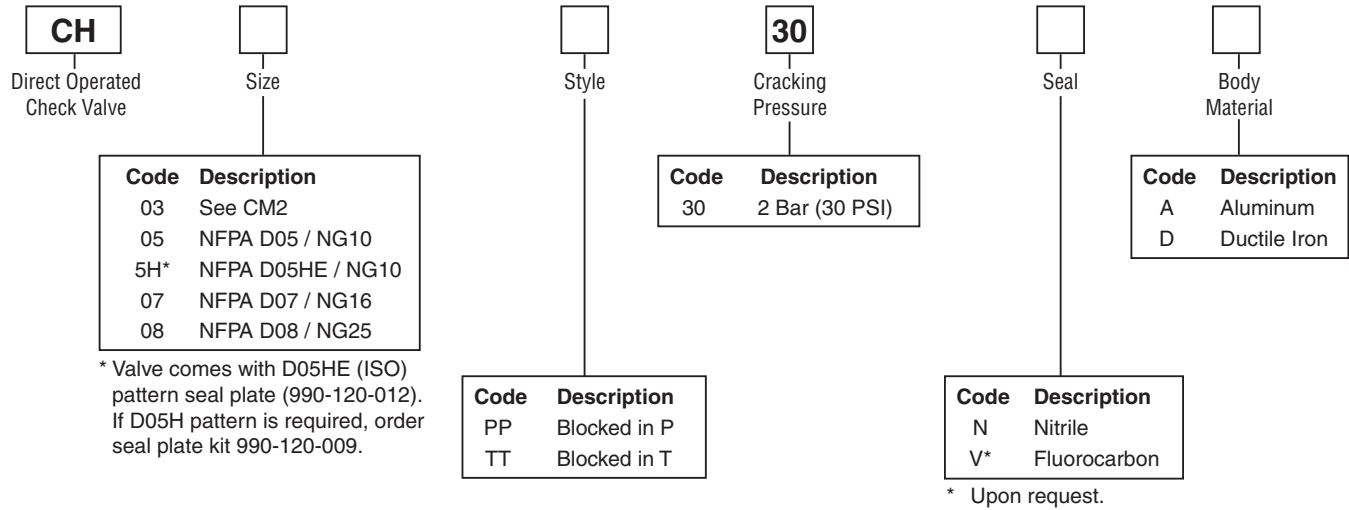
Features

- Cracking pressure 2.0 Bar (30 PSI).
- Sizes:
 - CH05 – NFPA D05 / NG10 / CETOP 5
 - CH5H – NFPA D05HE / NG10 / CETOP 5H
 - CH07 – NFPA D07 / NG16 / CETOP 7
 - CH08 – NFPA D08 / NG25 / CETOP 8

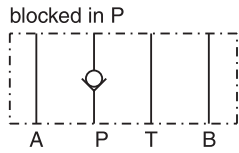


Specifications

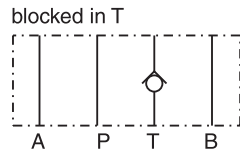
General					
Size		D05 / NG10	D05HE / NG10	D07 / NG16	D08 / NG25
Mounting Position	Unrestricted				
Ambient Temperature Range	-20°C to +50°C (-4°F to +122°F)				
Hydraulic					
Maximum Operating Pressure	Aluminum Body – up to 207 Bar (3000 PSI); Ductile Iron Body – up to 345 Bar (5000 PSI)				
Nominal Flow	151 LPM (40 GPM)	151 LPM (40 GPM)	303 LPM (80 GPM)	606 LPM (160 GPM)	
Leakage	< 1 DPM	< 1 DPM	< 1 DPM	< 1 DPM	
Fluid Temperature	-20°C to +80°C (-4°F to +176°F)				
Viscosity	Permitted	10 to 650 cSt / mm ² /s (46 to 3013 SSU)			
	Recommended	30 cSt / mm ² /s (139 SSU)			
Filtration	ISO Class 4406 (1999) 18/16/13 (acc. NAS 1638: 7)				



CHPP**



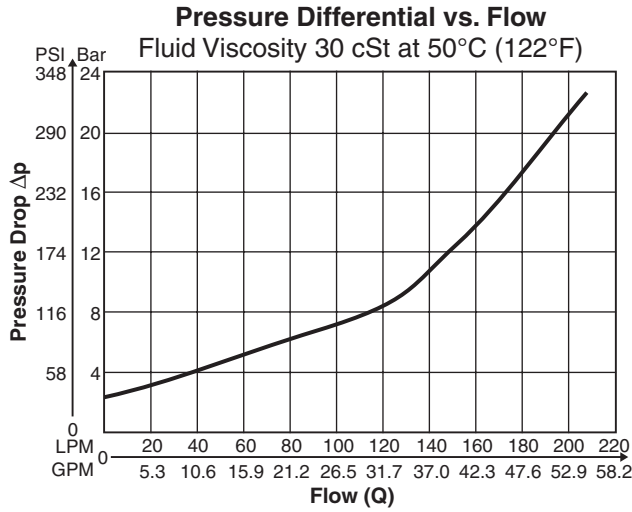
CHTT**



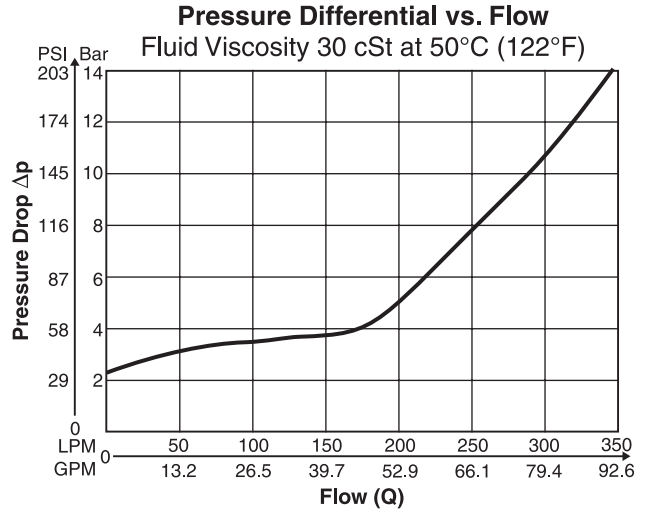
Weight:

Size	CH**PP30NA	CH**PP30ND	CH**TT30NA	CH**TT30ND
CH05, CH5H	0.8 kg (1.9 lbs.)	1.9 kg (4.2 lbs.)	0.8 kg (1.9 lbs.)	1.9 kg (4.2 lbs.)
CH07	2.2 kg (4.9 lbs.)	4.9 kg (10.9 lbs.)	2.7 kg (6.0 lbs.)	6.2 kg (13.7 lbs.)
CH08	4.7 kg (10.4 lbs.)	10.8 kg (23.8 lbs.)	5.3 kg (11.7 lbs.)	12.4 kg (27.3 lbs.)

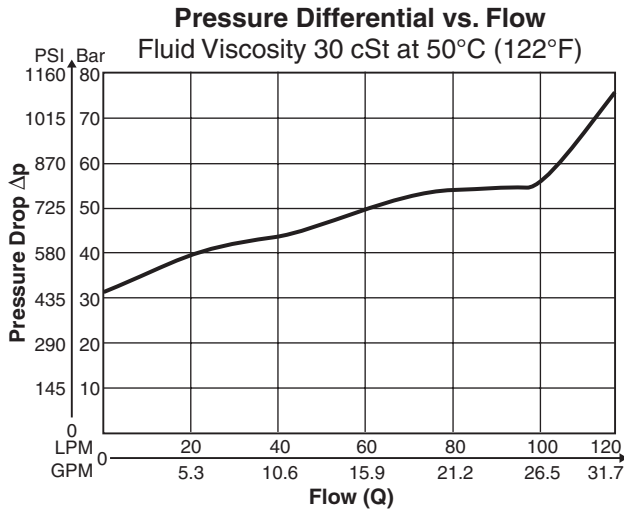
CH05/CH5H



CH07



CH08

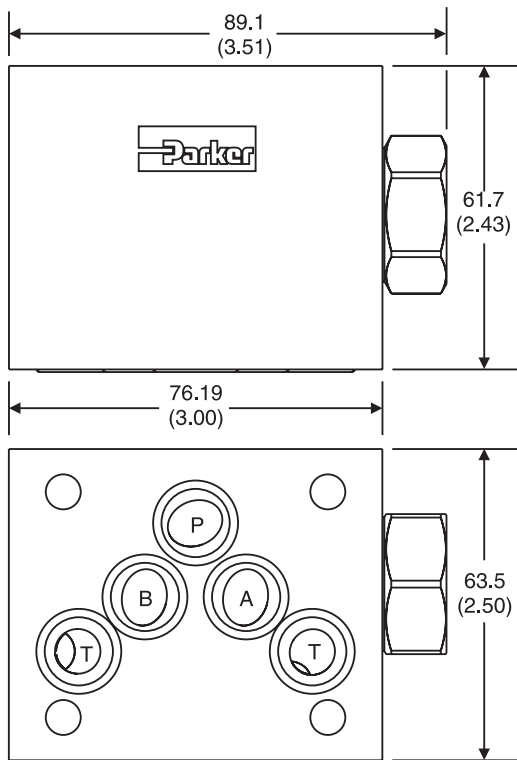


Dimensions

**Sandwich Valves
Series CH**

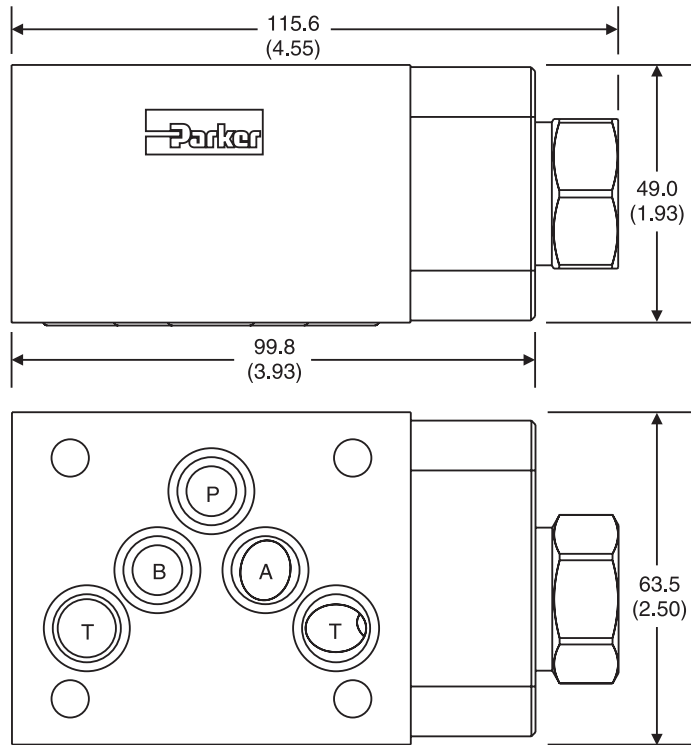
CH05PP

Inch equivalents for millimeter dimensions are shown in (**)



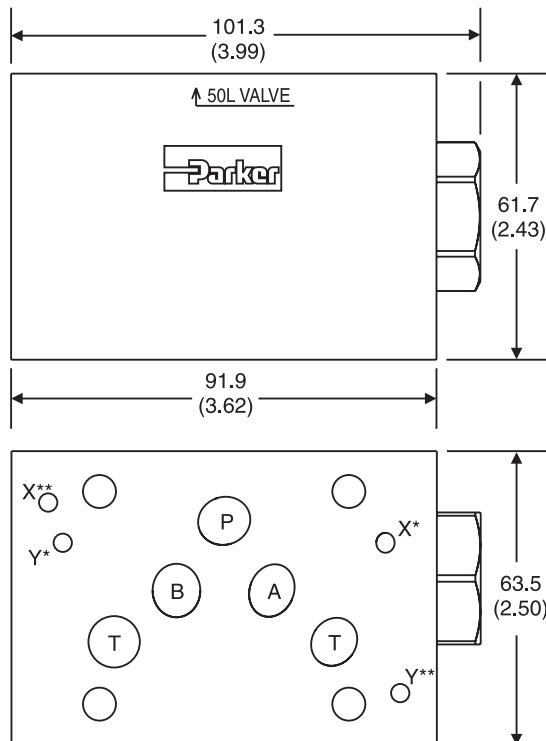
CH05TT

Inch equivalents for millimeter dimensions are shown in (**)



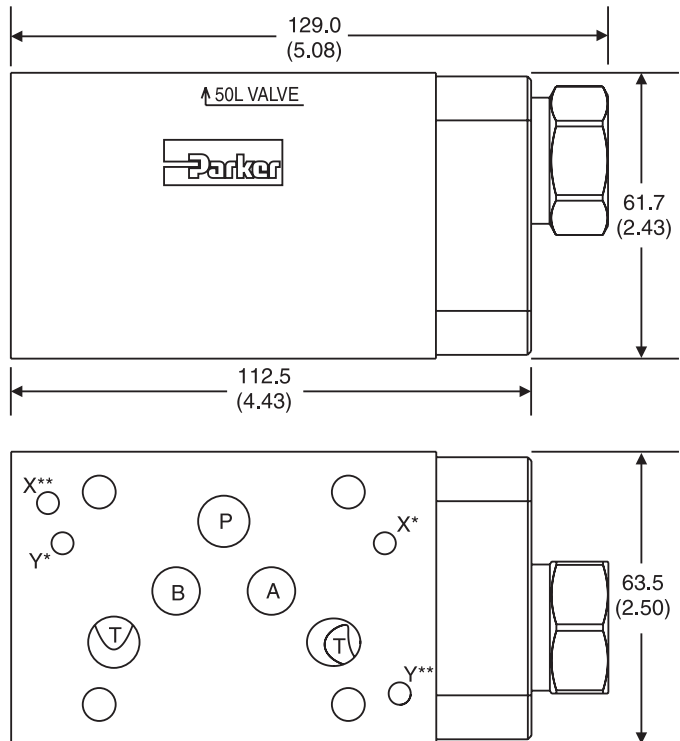
CH5HPP

Inch equivalents for millimeter dimensions are shown in (**)



CH5HTT

Inch equivalents for millimeter dimensions are shown in (**)



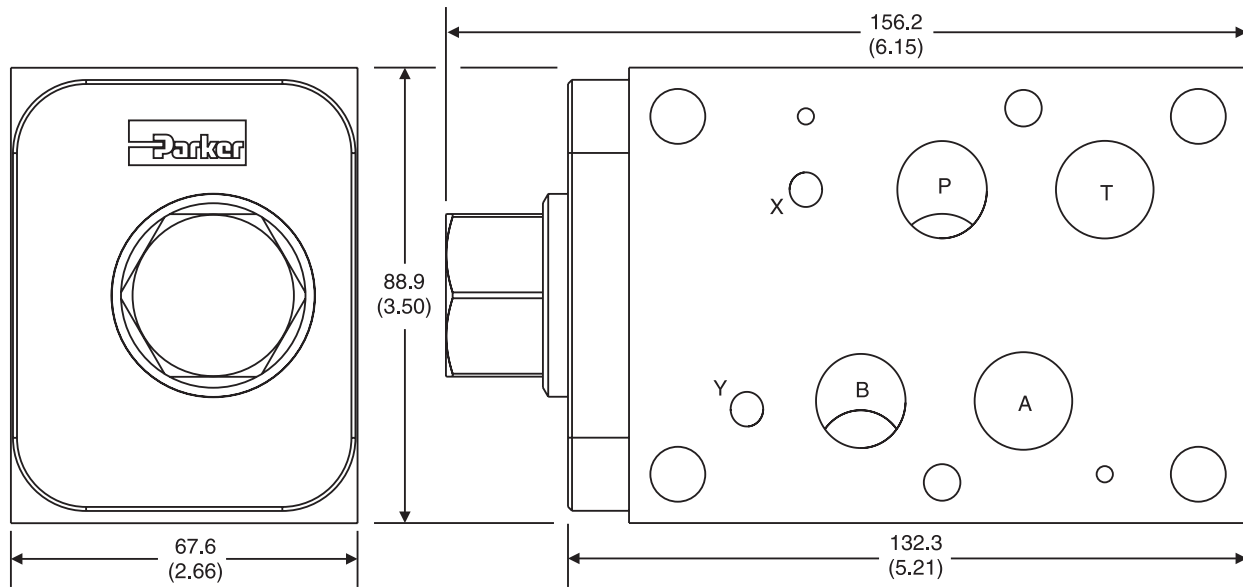
* D05HE (Standard) Valve comes with D05HE (ISO) pattern seal plate (990-120-012).
 ** D05H If D05H pattern is required, order seal plate kit 990-120-009.

* D05HE (Standard) Valve comes with D05HE (ISO) pattern seal plate (990-120-012).
 ** D05H If D05H pattern is required, order seal plate kit 990-120-009.



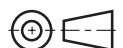
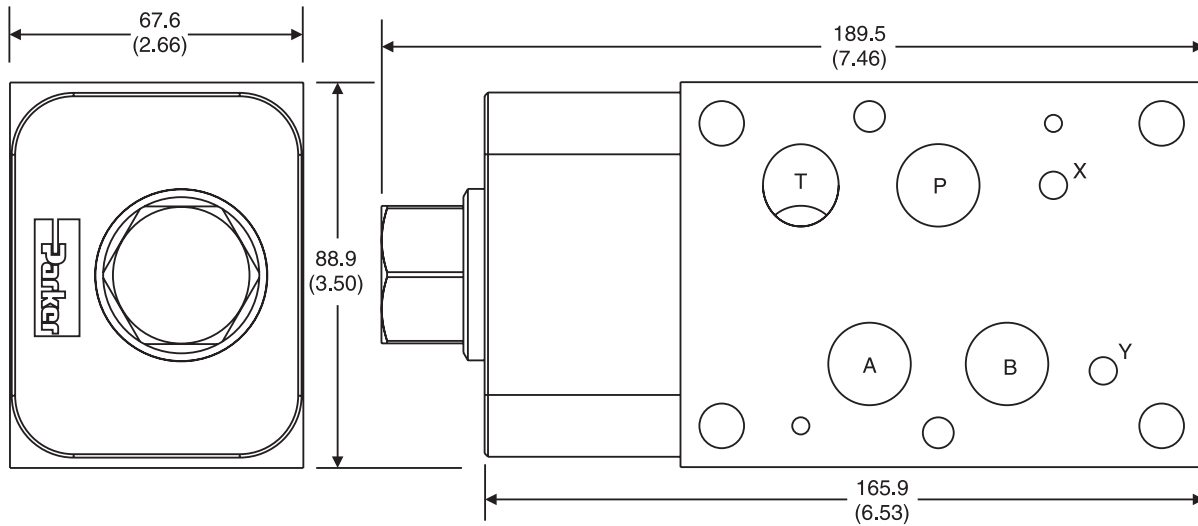
Dimensions

CH07PP – Inch equivalents for millimeter dimensions are shown in (**)

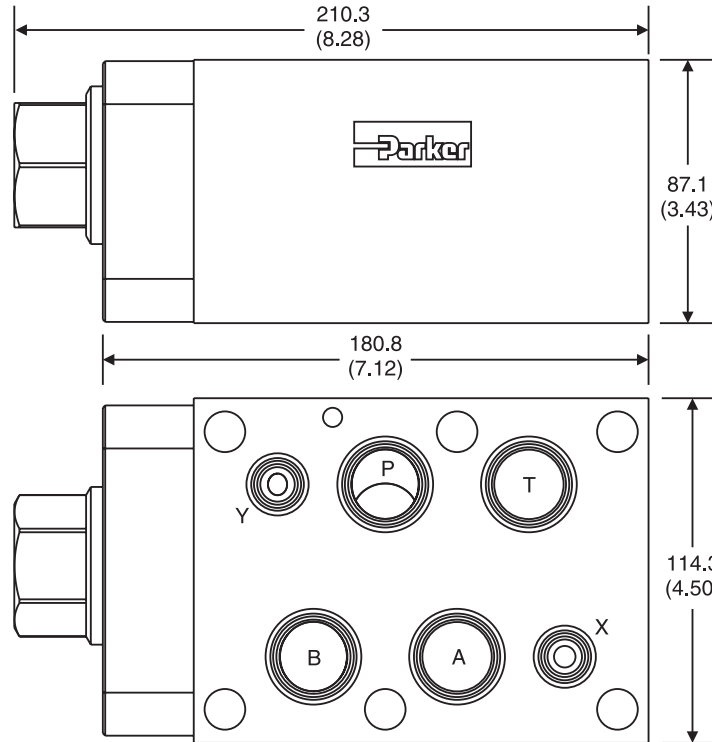


CH07TT – Inch equivalents for millimeter dimensions are shown in (**)

Note: This is a top view.



CH08PP – Inch equivalents for millimeter dimensions are shown in (**)



CH08TT – Inch equivalents for millimeter dimensions are shown in (**)

