

Parker CP Series Pilot Operated Check Sandwich Valve Service Manual

General Description.

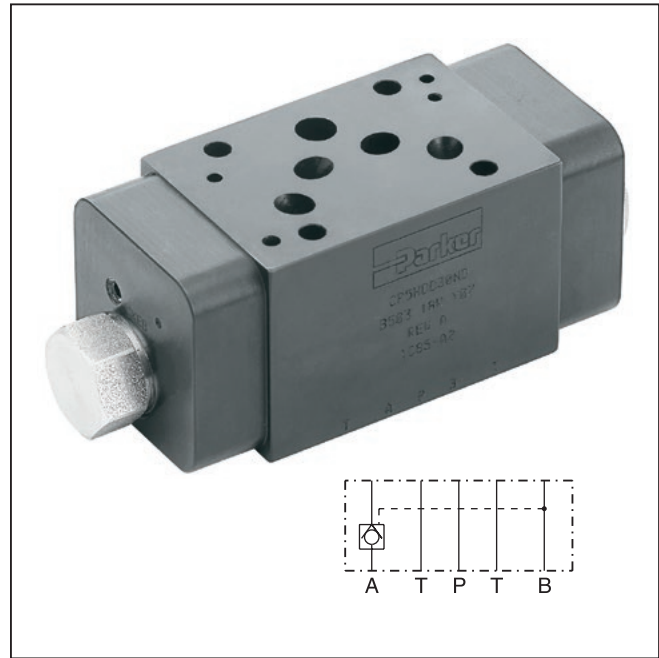
Series CP pilot operated check valves are designed for maximum flow rates.

The valves are typically used in combination with spool type directional control valves to ensure leak free positioning of the actuator.

The inlet flow is free while the outlet flow is blocked. Pressure in the inlet line opens the check valve and allows free outlet flow.

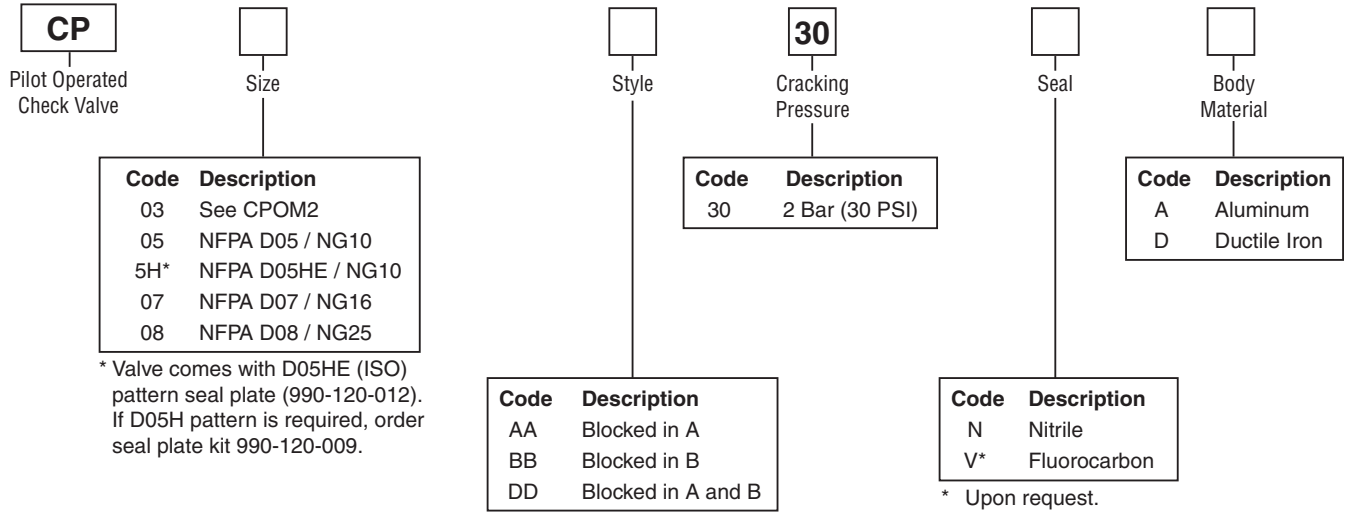
Features

- High life time.
- Check function in A, B or A + B.
- Sizes:
 - CP05 – NFPA D05 / NG10 / CETOP 5
 - CP5H – NFPA D05HE / NG10 / CETOP 5H
 - CP07 – NFPA D07 / NG16 / CETOP 7
 - CP08 – NFPA D08 / NG25 / CETOP 8



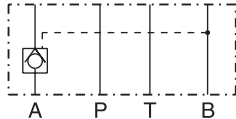
Specifications

General				
Size	D05 / NG10	D05HE / NG10	D07 / NG16	D08 / NG25
Mounting Position	Unrestricted			
Ambient Temperature Range	-20°C to +50°C (-4°F to +122°F)			
Hydraulic				
Maximum Operating Pressure	Aluminum Body – up to 207 Bar (3000 PSI); Ductile Iron Body – up to 345 Bar (5000 PSI)			
Nominal Flow	114 LPM (30 GPM)	114 LPM (30 GPM)	227 LPM (60 GPM)	454 LPM (120 GPM)
Leakage	1 DPM	1 DPM	1 DPM	1 DPM
Cracking Pressure	30 ± 0.2 Bar (3 PSI)			
Pilot Ratio	3:1	3:1	3:1	3:1
Fluid Temperature	-20°C to +80°C (-4°F to +176°F)			
Viscosity	10 to 650 cSt / mm ² /s (46 to 3013 SSU)			
Permitted Recommended	30 cSt / mm ² /s (139 SSU)			
Filtration	ISO Class 4406 (1999) 18/16/13 (acc. NAS 1638: 7)			



CPAA**

blocked in A



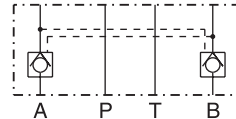
CPBB**

blocked in B



CPDD**

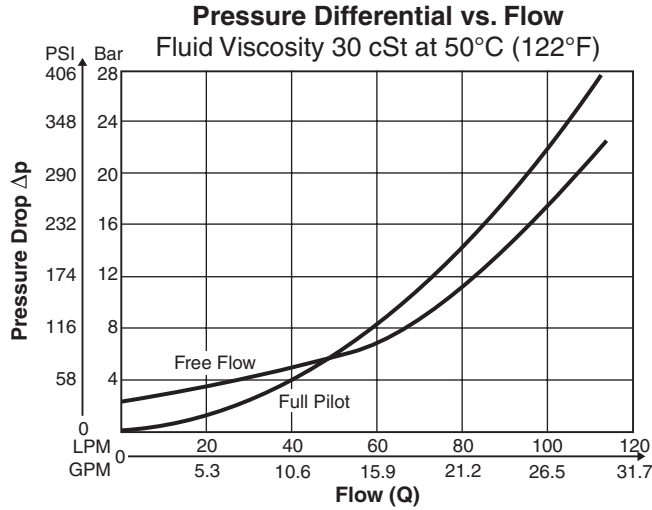
blocked in A and B



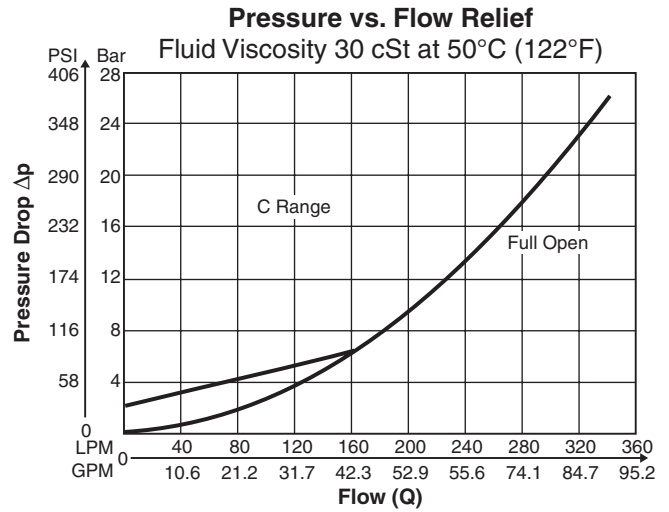
Weight:

Size	CP**AA30NA	CP**AA30ND	CP**BB30NA	CP**BB30ND	CP**DD30NA	CP**DD30ND
CP05, CP5H	0.8 kg (1.8 lbs.)	1.7 kg (3.8 lbs.)	0.8 kg (1.8 lbs.)	1.7 kg (3.8 lbs.)	1.3 kg (2.9 lbs.)	2.7 kg (5.9 lbs.)
CP07	2.4 kg (5.4 lbs.)	5.3 kg (11.8 lbs.)	2.4 kg (5.3 lbs.)	5.2 kg (11.6 lbs.)	3.5 kg (7.6 lbs.)	7.2 kg (15.8 lbs.)
CP08	5.2 kg (11.4 lbs.)	11.6 kg (25.6 lbs.)	5.8 kg (12.7 lbs.)	13.1 kg (29 lbs.)	7.6 kg (16.7 lbs.)	15.9 kg (35.1 lbs.)

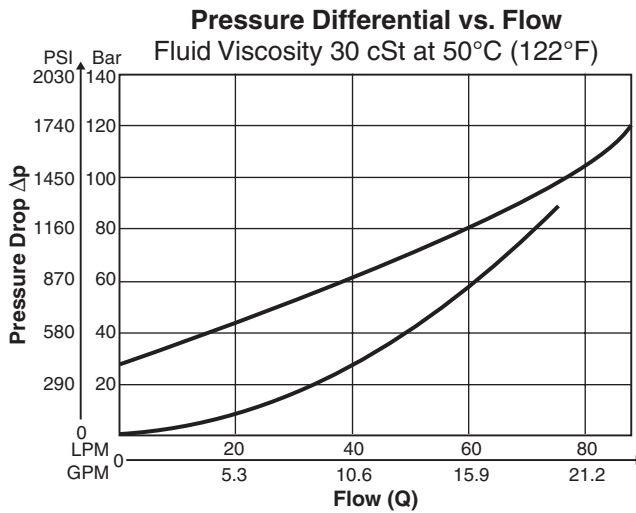
CP05/CP5H



CP07

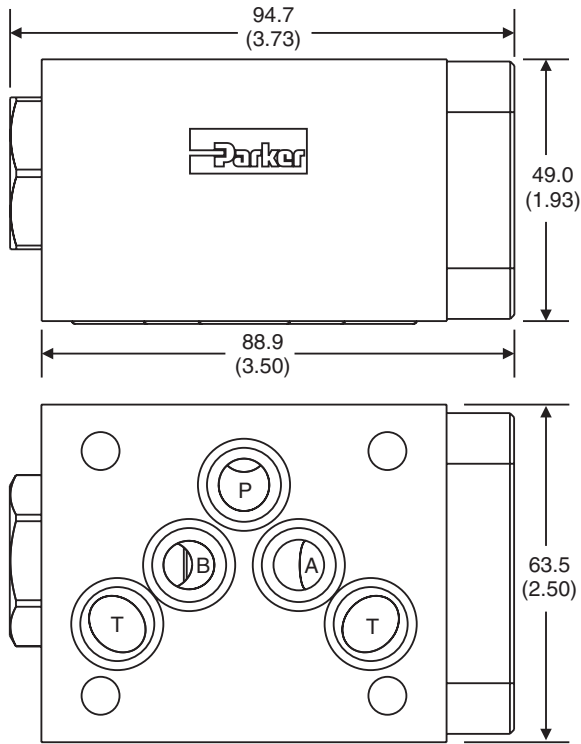


CP08



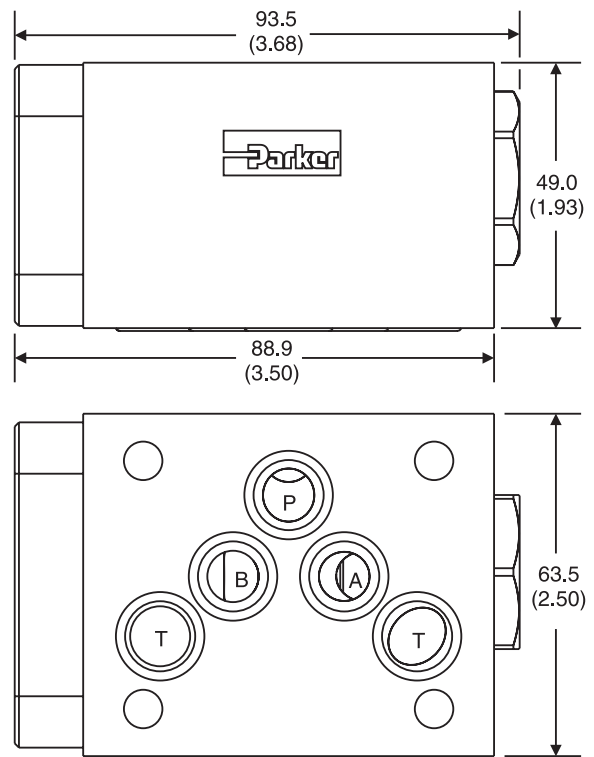
CP05AA

Inch equivalents for millimeter dimensions are shown in (**)

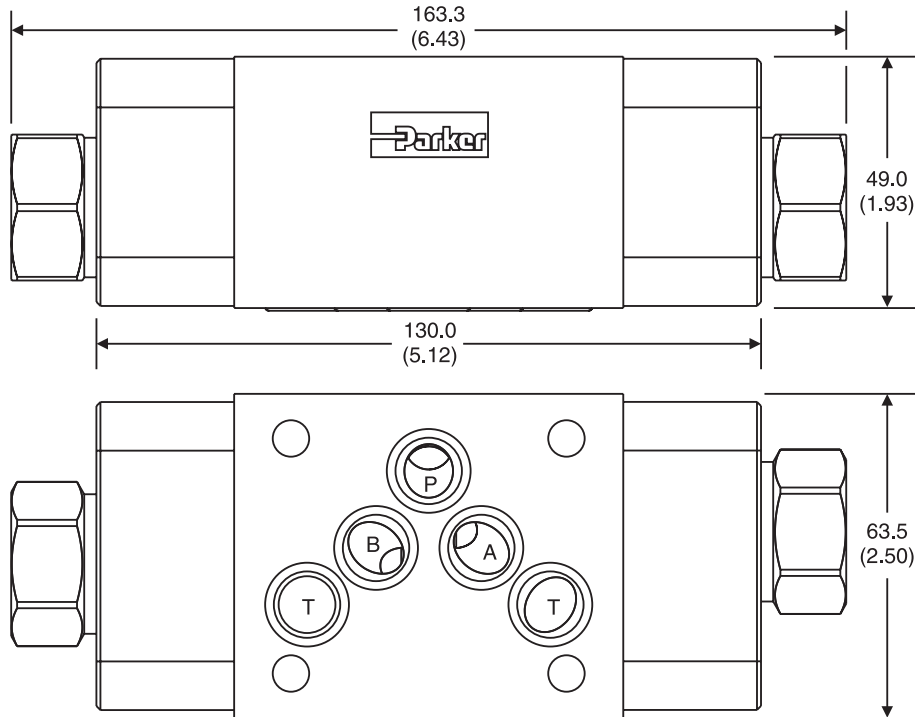


CP05BB

Inch equivalents for millimeter dimensions are shown in (**)



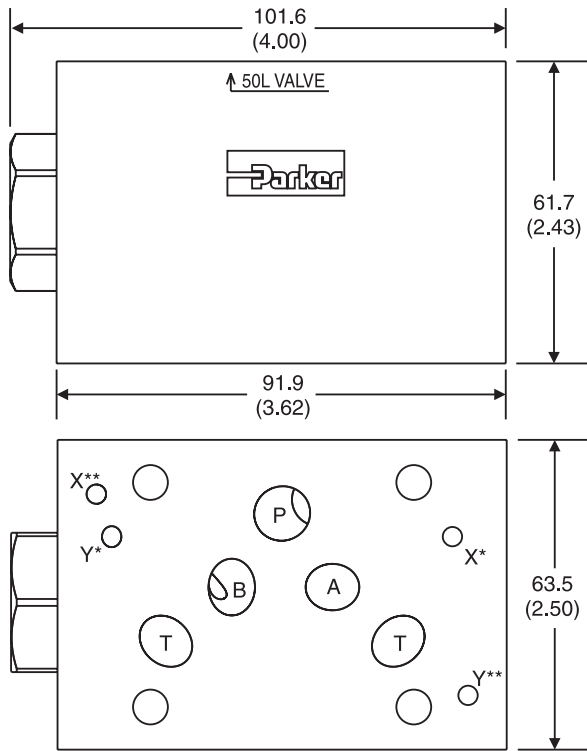
CP05DD – Inch equivalents for millimeter dimensions are shown in (**)



Dimensions

CP5HAA

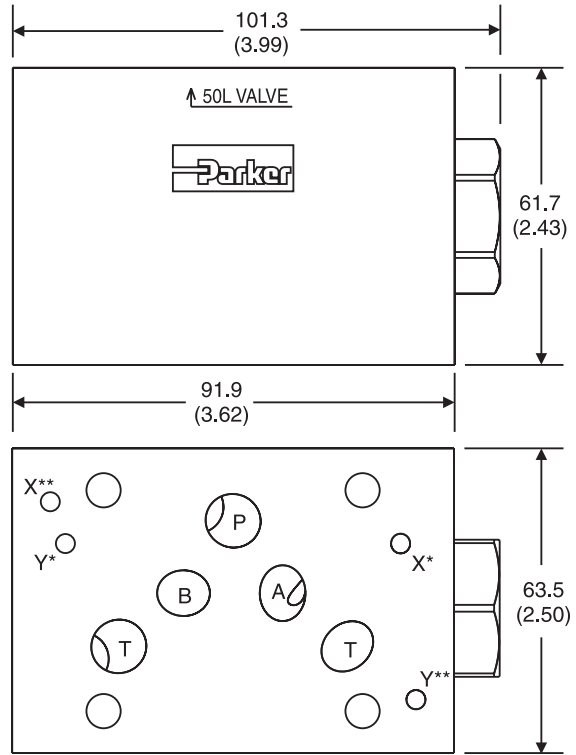
Inch equivalents for millimeter dimensions are shown in (**)



* D05HE (Standard)
** D05H

CP5HBB

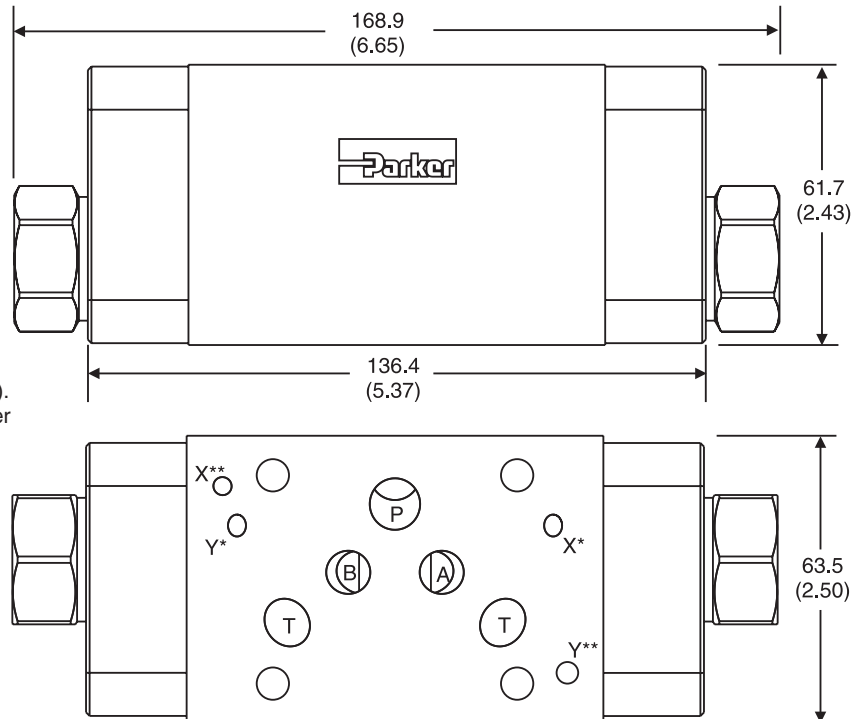
Inch equivalents for millimeter dimensions are shown in (**)



* D05HE (Standard)
** D05H

Valve comes with D05HE (ISO) pattern seal plate (990-120-012). If D05H pattern is required, order seal plate kit 990-120-009.

CP5HDD – Inch equivalents for millimeter dimensions are shown in (**)



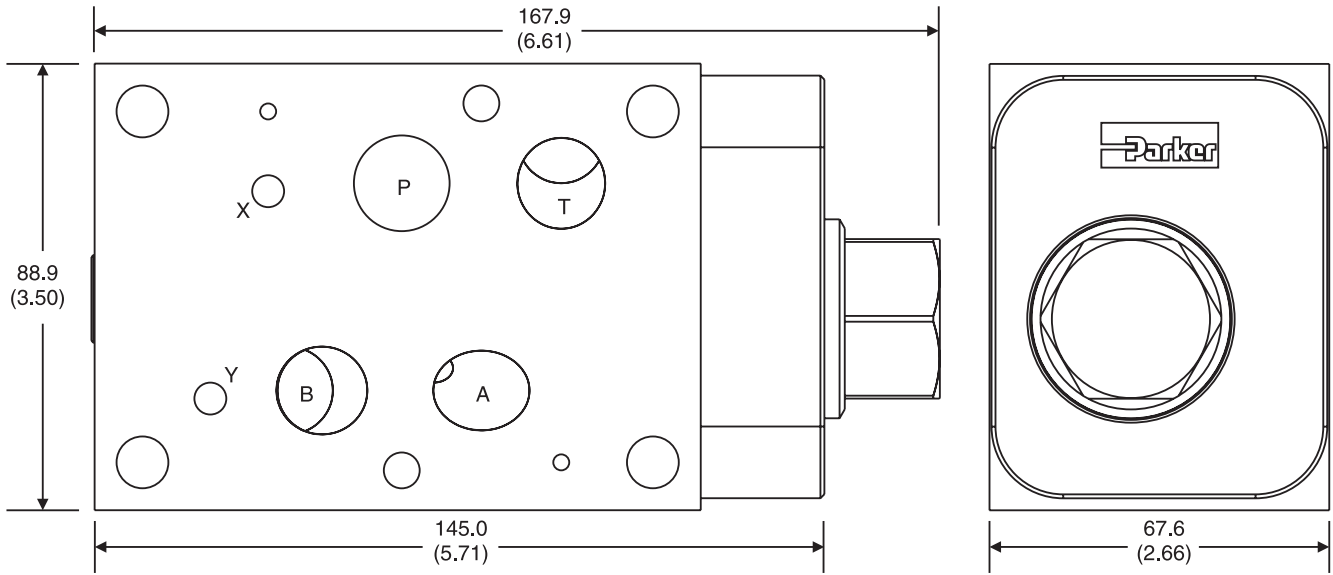
Valve comes with D05HE (ISO) pattern seal plate (990-120-012). If D05H pattern is required, order seal plate kit 990-120-009.

* D05HE (Standard)
** D05H

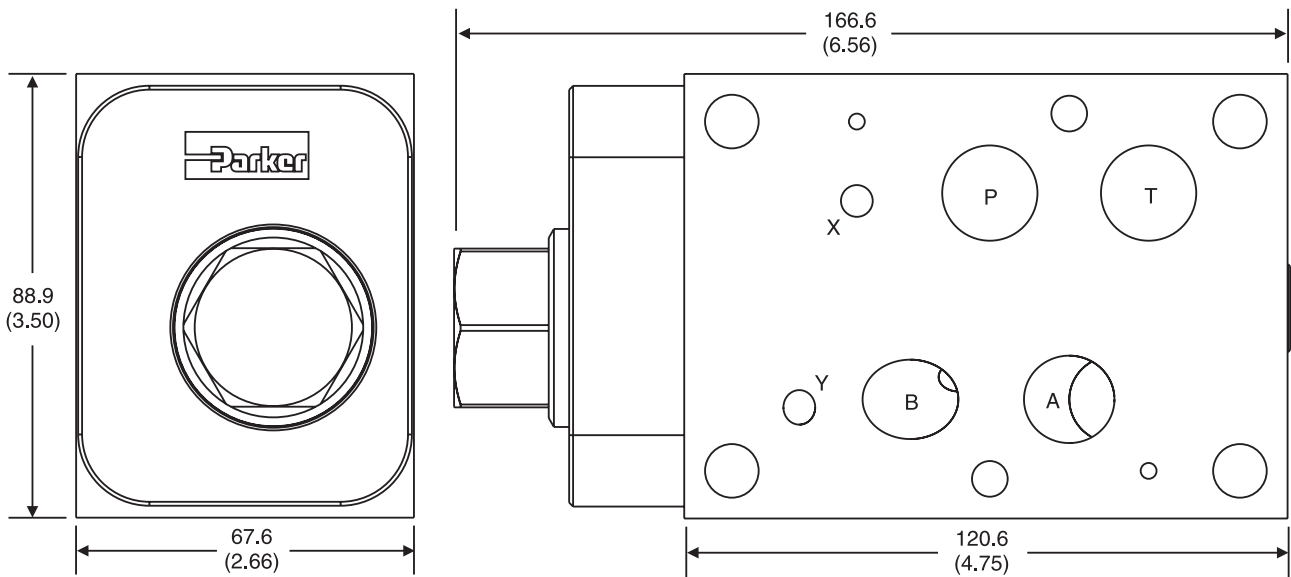


Dimensions

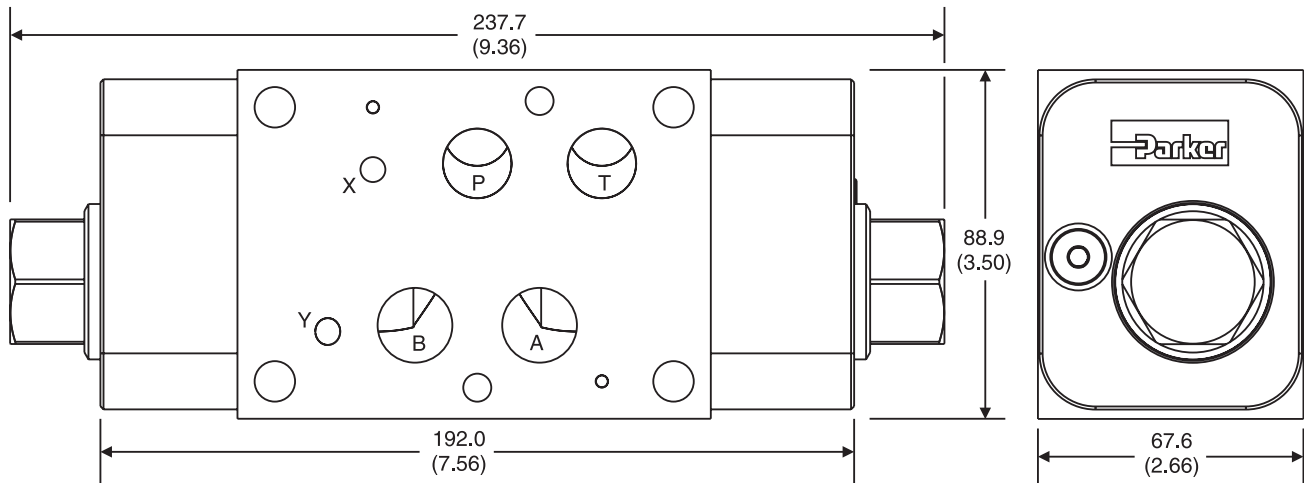
CP07AA – Inch equivalents for millimeter dimensions are shown in (**)



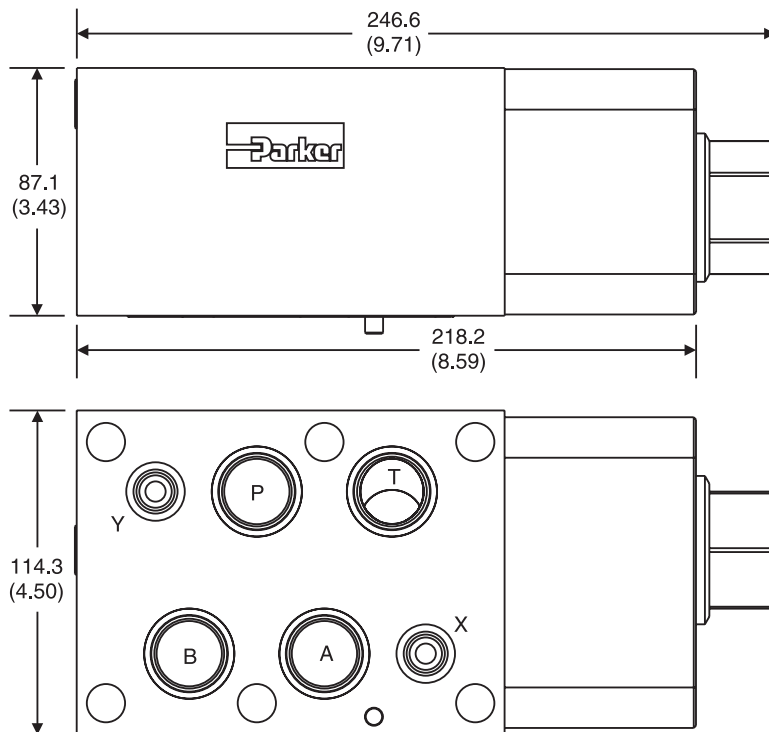
CP07BB – Inch equivalents for millimeter dimensions are shown in (**)



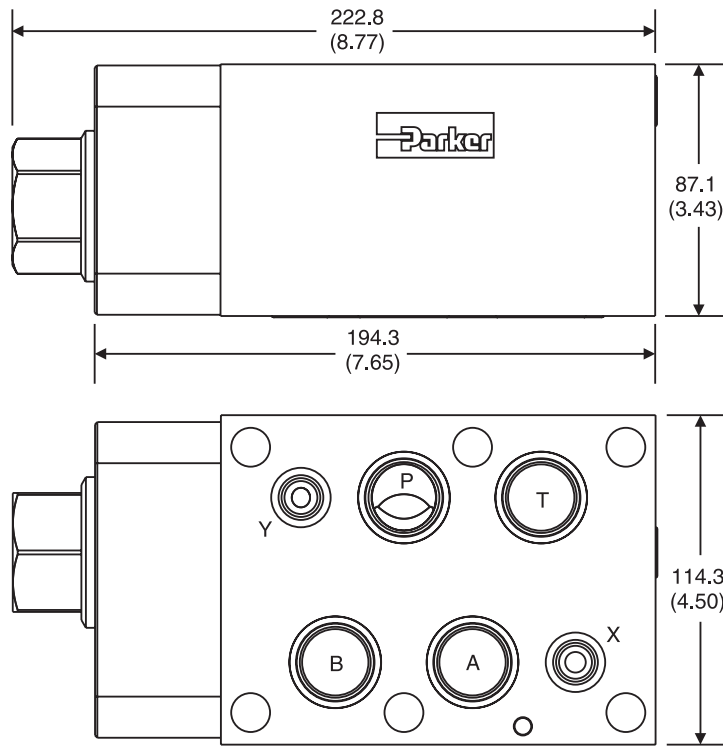
CP07DD – Inch equivalents for millimeter dimensions are shown in (**)



CP08AA – Inch equivalents for millimeter dimensions are shown in (**)



CP08BB – Inch equivalents for millimeter dimensions are shown in (**)



CP08DD – Inch equivalents for millimeter dimensions are shown in (**)

