

# Parker D61VL Series Lever Operated Directional Control Valve Service Manual

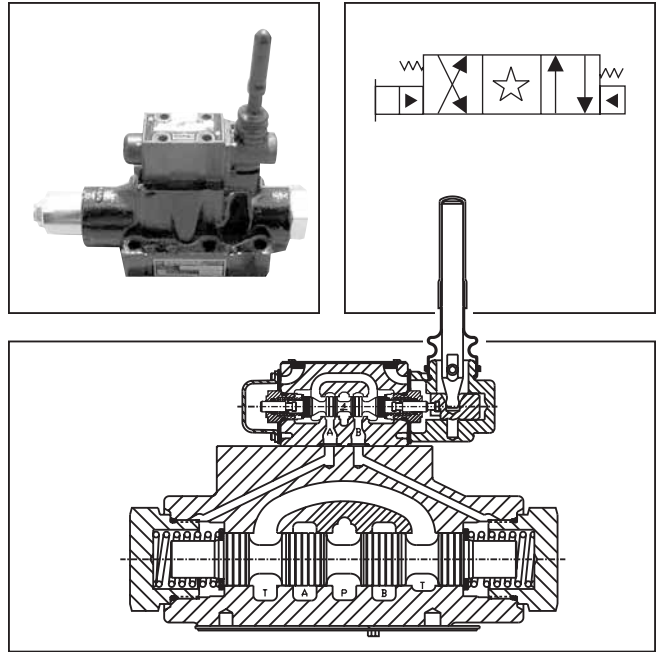
A

## General Description

Series D61VL directional control valves are 5-chamber, lever operated valves. They are available in 2 and 3-position styles. They are manifold or sub-plate mounted valves, which conform to NFPA's D08, CETOP 8 mounting patterns.

## Specifications

<b>Mounting Pattern</b>	NFPA D08, CETOP 8, NG25
<b>Max. Operating Pressure</b>	207 Bar (3000 PSI)
<b>Max. Tank Pressure</b>	Internal Drain Model: 34 Bar (500 PSI) External Drain Model: 207 Bar (3000 PSI)
<b>Maximum Drain Pressure</b>	34 Bar (500 PSI)
<b>Maximum Flow</b>	See Reference Data
<b>Pilot Pressure</b>	Oil Min. 6.9 Bar (100 PSI) Oil Max. 207 Bar (3000 PSI)
<b>Response Time</b>	Varies with pilot line size and length, pilot pressure, pilot valve shift time & flow capacity (GPM)



## Features

- Low force required to shift spool.
- Hardened spools provide long life.
- Low pressure drop design.

## Ordering Information

<div style="border: 1px solid black; padding: 2px; display: inline-block; margin-bottom: 5px;"><b>D</b></div> <p style="font-size: 0.8em;">Directional Control Valve</p>	<div style="border: 1px solid black; padding: 2px; display: inline-block; margin-bottom: 5px;"><b>61V</b></div> <p style="font-size: 0.8em;">Basic Valve</p>	<div style="border: 1px solid black; padding: 2px; display: inline-block; margin-bottom: 5px;"><b>L</b></div> <p style="font-size: 0.8em;">Lever Operated Pilot</p>	<div style="border: 1px solid black; padding: 2px; display: inline-block; margin-bottom: 5px;"> </div> <p style="font-size: 0.8em;">Spool</p>	<div style="border: 1px solid black; padding: 2px; display: inline-block; margin-bottom: 5px;"> </div> <p style="font-size: 0.8em;">Style</p>	<div style="border: 1px solid black; padding: 2px; display: inline-block; margin-bottom: 5px;"> </div> <p style="font-size: 0.8em;">Pilot Supply and Drain</p>	<div style="border: 1px solid black; padding: 2px; display: inline-block; margin-bottom: 5px;"> </div> <p style="font-size: 0.8em;">Seal</p>	<div style="border: 1px solid black; padding: 2px; display: inline-block; margin-bottom: 5px;"> </div> <p style="font-size: 0.8em;">Valve Variations</p>	<div style="border: 1px dashed black; padding: 2px; display: inline-block; margin-bottom: 5px;"> </div> <p style="font-size: 0.8em;">Design Series</p>																																																		
<b>NFPA D08 CETOP 8</b>																																																										
<table border="1" style="width: 100%; border-collapse: collapse; font-size: 0.8em;"> <thead> <tr> <th>Code</th><th>Symbol</th><th>Code</th><th>Symbol</th></tr> </thead> <tbody> <tr> <td>001</td><td></td><td>008*</td><td></td></tr> <tr> <td>002</td><td></td><td>009**</td><td></td></tr> <tr> <td>004</td><td></td><td>011</td><td></td></tr> <tr> <td></td><td></td><td>012</td><td></td></tr> </tbody> </table>		Code	Symbol	Code	Symbol	001		008*		002		009**		004		011				012		<table border="1" style="width: 100%; border-collapse: collapse; font-size: 0.8em;"> <thead> <tr> <th>Code</th><th>Description</th></tr> </thead> <tbody> <tr> <td>1</td><td>Int. pilot/Ext. drain</td></tr> <tr> <td>2</td><td>Ext. pilot/Ext. drain</td></tr> <tr> <td>4#</td><td>Int. pilot/Int. drain</td></tr> <tr> <td>5</td><td>Ext. pilot/Int. drain</td></tr> </tbody> </table> <p style="font-size: 0.7em;"># Not available with 002, 008 &amp; 009 spools.</p>		Code	Description	1	Int. pilot/Ext. drain	2	Ext. pilot/Ext. drain	4#	Int. pilot/Int. drain	5	Ext. pilot/Int. drain	<table border="1" style="width: 100%; border-collapse: collapse; font-size: 0.8em;"> <thead> <tr> <th>Code</th><th>Description</th></tr> </thead> <tbody> <tr> <td>N</td><td>Nitrile</td></tr> <tr> <td>V</td><td>Fluorocarbon</td></tr> </tbody> </table>		Code	Description	N	Nitrile	V	Fluorocarbon	<table border="1" style="width: 100%; border-collapse: collapse; font-size: 0.8em;"> <thead> <tr> <th>Code</th><th>Description</th></tr> </thead> <tbody> <tr> <td>Omit</td><td>Standard</td></tr> <tr> <td>7</td><td>Pilot Choke – Meter Out</td></tr> <tr> <td>8</td><td>Stroke Adj. 'B' End</td></tr> <tr> <td>9</td><td>Stroke Adj. 'A' End</td></tr> <tr> <td>60</td><td>Pilot Choke – Meter In</td></tr> <tr> <td>89</td><td>Stroke Adj. 'A' &amp; 'B' Ends</td></tr> </tbody> </table>		Code	Description	Omit	Standard	7	Pilot Choke – Meter Out	8	Stroke Adj. 'B' End	9	Stroke Adj. 'A' End	60	Pilot Choke – Meter In	89	Stroke Adj. 'A' & 'B' Ends	<p>NOTE: Not required when ordering.</p>
Code	Symbol	Code	Symbol																																																							
001		008*																																																								
002		009**																																																								
004		011																																																								
		012																																																								
Code	Description																																																									
1	Int. pilot/Ext. drain																																																									
2	Ext. pilot/Ext. drain																																																									
4#	Int. pilot/Int. drain																																																									
5	Ext. pilot/Int. drain																																																									
Code	Description																																																									
N	Nitrile																																																									
V	Fluorocarbon																																																									
Code	Description																																																									
Omit	Standard																																																									
7	Pilot Choke – Meter Out																																																									
8	Stroke Adj. 'B' End																																																									
9	Stroke Adj. 'A' End																																																									
60	Pilot Choke – Meter In																																																									
89	Stroke Adj. 'A' & 'B' Ends																																																									
<p>* 008 spool has closed crossover. ** 009 spool has open crossover.</p> <p>Valve schematic symbols are per NFPA/ANSI standards, providing flow P to A when energizing operator A. Note operators reverse sides for #8 and #9 spools. See installation information for details.</p> <p><b>Valve Weight:</b> 12.1 kg (26.7 lbs.) <b>Standard Bolt Kit:</b> BK227 <b>Metric Bolt Kit:</b> BKM227 <b>Seal Kit:</b> Nitrile SKD61VL Fluorocarbon SKD61VLV</p>		<table border="1" style="width: 100%; border-collapse: collapse;"> <thead> <tr> <th>Code</th><th>Description</th><th>Symbol</th></tr> </thead> <tbody> <tr> <td><b>B*</b></td><td><b>Single operator, 2 position, spring offset. P to A and B to T in offset position.</b></td><td></td></tr> <tr> <td><b>C</b></td><td><b>Double operator, 3 position, spring centered.</b></td><td></td></tr> <tr> <td><b>D*</b></td><td><b>Double operator, 2 position, detent.</b></td><td></td></tr> <tr> <td><b>E</b></td><td>Single operator, 2 position, spring centered. P to B and A to T in shifted position.</td><td></td></tr> <tr> <td><b>H*</b></td><td><b>Single operator, 2 position, spring offset. P to B and A to T in offset position.</b></td><td></td></tr> <tr> <td><b>K</b></td><td>Single operator, 2 position. Spring centered. P to A and B to T in shifted position.</td><td></td></tr> </tbody> </table>		Code	Description	Symbol	<b>B*</b>	<b>Single operator, 2 position, spring offset. P to A and B to T in offset position.</b>		<b>C</b>	<b>Double operator, 3 position, spring centered.</b>		<b>D*</b>	<b>Double operator, 2 position, detent.</b>		<b>E</b>	Single operator, 2 position, spring centered. P to B and A to T in shifted position.		<b>H*</b>	<b>Single operator, 2 position, spring offset. P to B and A to T in offset position.</b>		<b>K</b>	Single operator, 2 position. Spring centered. P to A and B to T in shifted position.		<p> This condition varies with spool code.</p>																																	
Code	Description	Symbol																																																								
<b>B*</b>	<b>Single operator, 2 position, spring offset. P to A and B to T in offset position.</b>																																																									
<b>C</b>	<b>Double operator, 3 position, spring centered.</b>																																																									
<b>D*</b>	<b>Double operator, 2 position, detent.</b>																																																									
<b>E</b>	Single operator, 2 position, spring centered. P to B and A to T in shifted position.																																																									
<b>H*</b>	<b>Single operator, 2 position, spring offset. P to B and A to T in offset position.</b>																																																									
<b>K</b>	Single operator, 2 position. Spring centered. P to A and B to T in shifted position.																																																									
		<p>*Available with 001, 002, 004, 011, 012.</p>																																																								

**Bold: Designates Tier I products and options.**

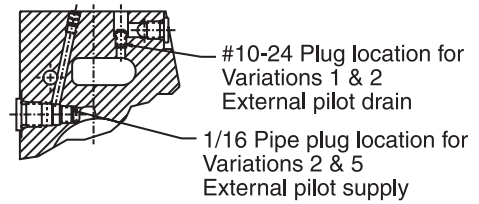
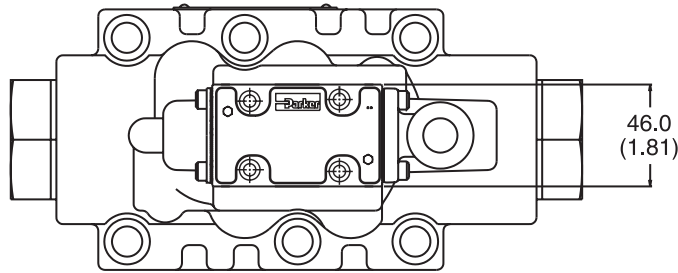
**Non-Bold: Designates Tier II products and options. These products will have longer lead times.**

D61.indd, dd

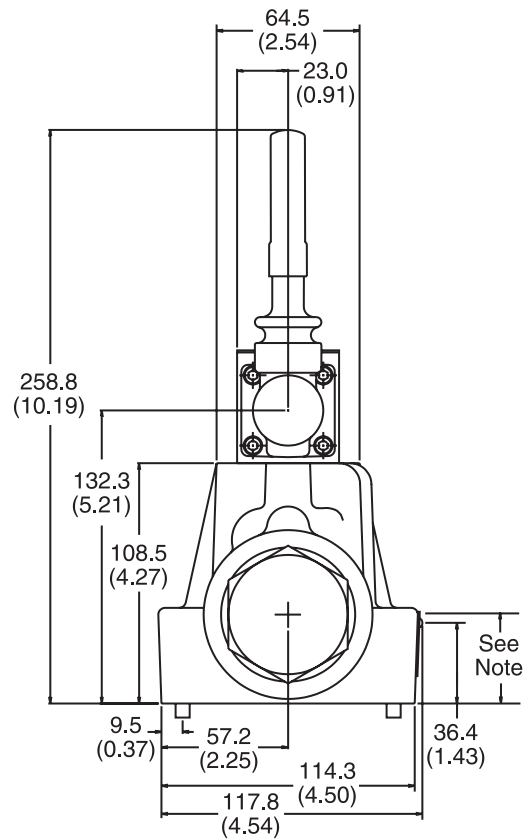
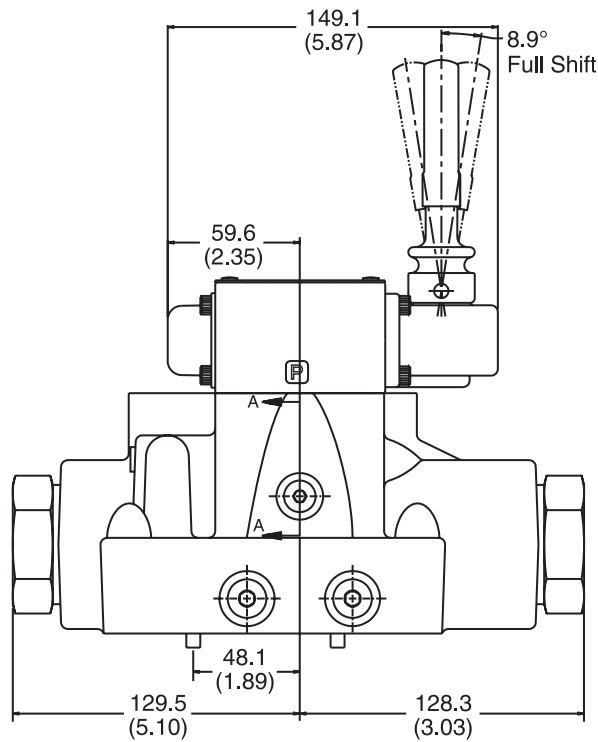


Inch equivalents for millimeter dimensions are shown in (\*\*)

**A**



SECTION A-A



**Note:** 41.9mm (1.65") from bottom of bolt counterbore.

