

Parker D6P Series Oil Operated Directional Control Valve Service Manual

General Description

Series D6P directional control valves are 5-chamber, pilot operated valves. They are available in 2 or 3-position styles. These valves are manifold or subplate mounted, and conform to NFPA's D08, CETOP 8 mounting patterns.

Features

- Low pressure drop design.
- Hardened spools provide long life.
- Fast response option available.

Specifications

Mounting Pattern	NFPA D08, CETOP 8, NG25
Max. Operating Press.	207 Bar (3000 PSI)
Max. Tank Line Press.	207 Bar (3000 PSI)
Max. Drain Pressure	207 Bar (3000 PSI)
Min. Pilot Pressure	5.1 Bar* (75 PSI)
Max. Pilot Pressure	207 Bar (3000 PSI)
Nominal Flow	189 Liters/Min (50 GPM)
Maximum Flow	See Reference Chart

* 6.9 Bar (100 PSI) for 2, 8, 9 & 12 spools

For flow path, pilot drain and pilot pressure details, see Installation Information.

Ordering Information

<div style="border: 1px solid black; padding: 2px; width: 30px; margin: 0 auto;">D</div> Directional Control Valve	<div style="border: 1px solid black; padding: 2px; width: 30px; margin: 0 auto;">6</div> Basic Valve	<div style="border: 1px solid black; padding: 2px; width: 30px; margin: 0 auto;">P</div> Hydraulic Pilot	<div style="border: 1px solid black; padding: 2px; width: 30px; margin: 0 auto;"></div> Spool	<div style="border: 1px solid black; padding: 2px; width: 30px; margin: 0 auto;"></div> Style	<div style="border: 1px solid black; padding: 2px; width: 30px; margin: 0 auto;"></div> Pilot Supply and Drain	<div style="border: 1px solid black; padding: 2px; width: 30px; margin: 0 auto;"></div> Seal	<div style="border: 1px solid black; padding: 2px; width: 30px; margin: 0 auto;"></div> Valve Variations	<div style="border: 1px solid black; padding: 2px; width: 30px; margin: 0 auto;"></div> Design Series
--	--	--	---	---	--	--	--	---

**NFPA D08
CETOP 8**

Code	Symbol	Code	Symbol
1		8*	
2		9**	
4		11	
		12	

Code	Description
N	Nitrile
V	Fluorocarbon

Code	Description
2	Ext. Pilot — Ext. Drain
5#	Ext. Pilot — Int. Drain

Available in "B" & "H" styles only.

Code	Description
7	Pilot Choke — Meter Out
8	Stroke Adj. 'B' End
9	Stroke Adj. 'A' End
20	Fast Response
60	Pilot Choke — Meter In
89	Stroke Adj. 'A' & 'B' Ends

NOTE: Not required when ordering.

* 8 spool has closed crossover.

** 9 spool has open crossover.

Valve schematic symbols are per NFPA/ANSI standards, providing flow P to A when energizing operator X. Note operators reverse sides for #8 and #9 spools. See installation information for details.

Valve Weight: 11.0 kg (24.2 lbs.)

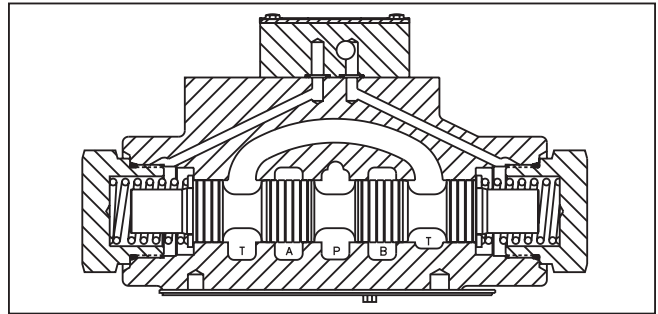
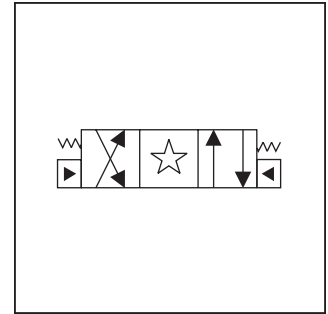
Standard Bolt Kit: BK227

Metric Bolt Kit: BKM227

Bold: Designates Tier I products and options.

Non-Bold: Designates Tier II products and options. These products will have longer lead times.

D61.indd, dd



Response Time

Response time will vary with pilot line size, pilot line length, pilot pressure shift time and flow capacity of the control valve.

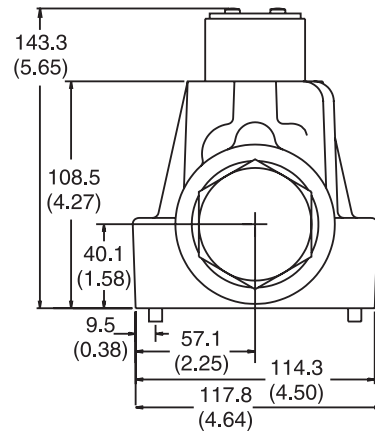
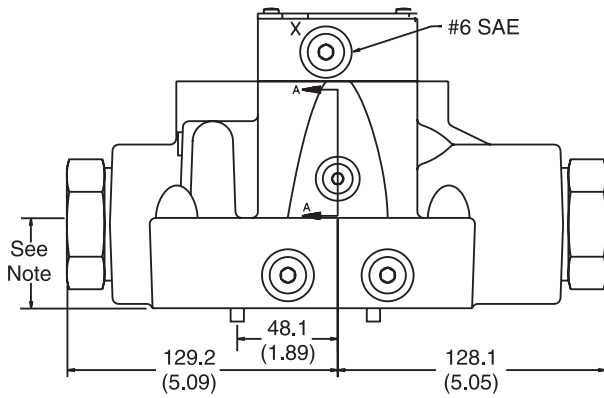
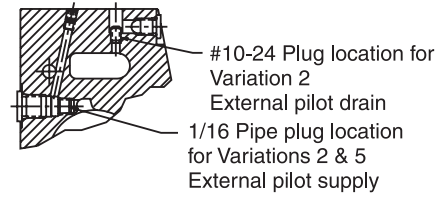
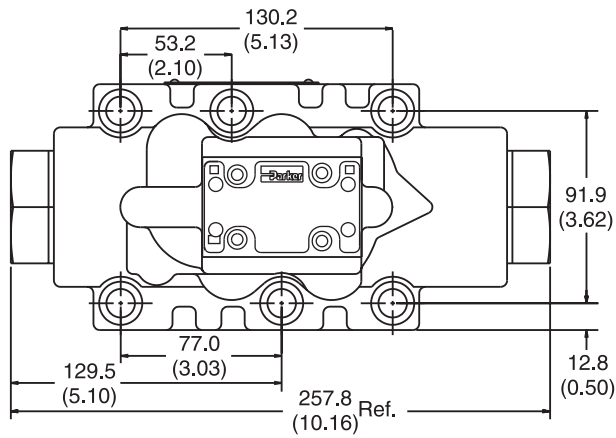
Shift Volume

The pilot chamber requires a volume of 0.54 in³ for center to end and 1.08 in³ for end to end.

Inch equivalents for millimeter dimensions are shown in (**)

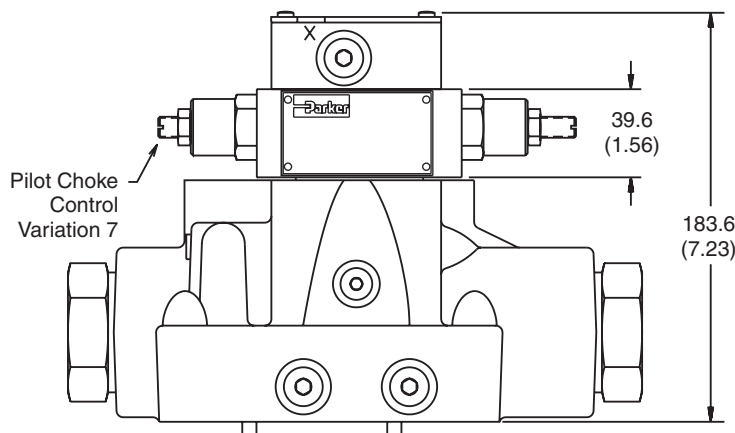
A

Standard Pilot Operated



Note: 41.9mm (1.65") from bottom of bolt hole counterbore to bottom of valve.

Pilot Operated with Pilot Choke Control



Note: 41.9mm (1.65") from bottom of bolt hole counterbore to bottom of valve.