

# Parker D8P Series Oil Operated Directional Control Valve Service Manual

**A**

## General Description

Series D8P directional control valves are 5-chamber, pilot operated valves. They are available in 2 or 3-position styles. These valves are manifold or sub-plate mounted, and conform to NFPA's D08, CETOP 8 mounting pattern.

## Features

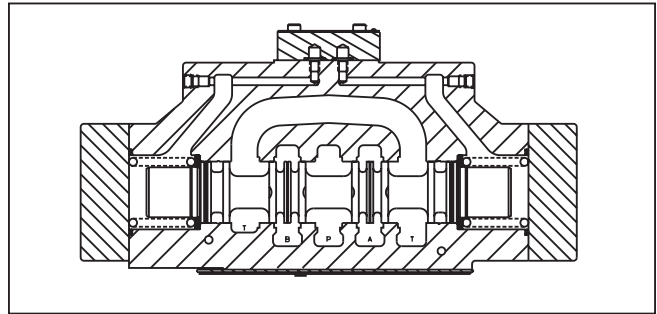
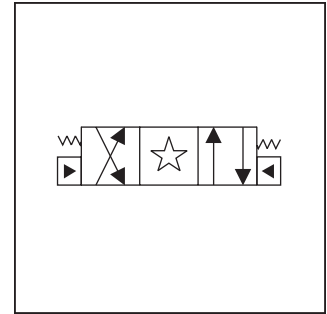
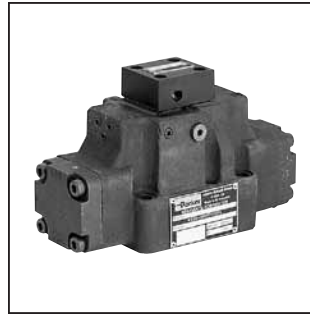
- Low pressure drop design.
- Hardened spools provide long life.

## Specifications

<b>Mounting Pattern</b>	NFPA D08, CETOP 8, NG25
<b>Max. Operating Pressure</b>	345 Bar (5000 PSI)
<b>Max. Tank Line Pressure</b>	345 Bar (5000 PSI)
<b>Max. Drain Pressure</b>	345 Bar (5000 PSI)
<b>Min. Pilot Pressure</b>	5.1 Bar* (75 PSI)
<b>Max. Pilot Pressure</b>	345 Bar (5000 PSI)
<b>Nominal Flow</b>	302 LPM (80 GPM)
<b>Max. Flow</b>	See Reference Data Chart

\* 6.9 Bar (100 PSI) for 2, 8, 9 & 12 spools

For flow path, pilot drain and pilot pressure details, see Installation Information.



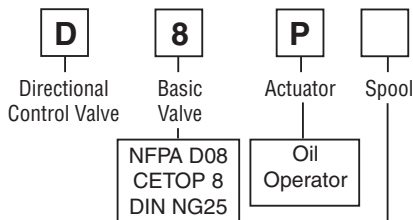
## Response Time

Response time will vary with pilot line size, pilot line length, pilot pressure shift time and flow capacity of the control valve.

## Shift Volume

The pilot chamber requires a volume of 1.35 in<sup>3</sup> (22.1 cc) for center to end.

## Ordering Information



NFPA D08  
CETOP 8  
DIN NG25

Oil  
Operator

Code	Symbol	Code	Symbol
1		11	
2		12	
4		20*	
7		30**	
9**			

\* 20 spool has closed crossover.

\*\* 9 & 30 spools have open crossover.

Valve schematic symbols are per NFPA/ANSI standards, providing flow P to A when energizing operator X. Note operators reverse sides for #9 spool. See installation information for details.

Code	Description
2	Ext. Pilot / Ext. Drain
5#	Ext. Pilot / Int. Drain

# Available in "B" and "H" style only.

Code	Type
N	Nitrile
V	Fluorocarbon

Code	Description
7	Pilot Choke – Meter Out
8	Stroke Adj. 'B' End
9	Stroke Adj. 'A' End
60	Pilot Choke – Meter In
89	Stroke Adj. 'A' & 'B' Ends

Design Series  
NOTE:  
Not required when ordering.

Code	Description	Symbol
B†	Sgl. operator, 2 position, spring offset. P to A and B to T in offset position.	
C	Dbl. operator, 3 position, spring centered.	
H†	Sgl. operator, 2 position, spring offset. P to B and A to T in offset position.	

† Available with 20 & 30 spools only.

This condition varies with spool code.

**Valve Weight:** 18.9 kg (41.7 lbs.) **Standard Bolt Kit:** BK228 **Metric Bolt Kit:** BKM228

**Bold: Designates Tier I products and options.**

**Non-Bold: Designates Tier II products and options. These products will have longer lead times.**

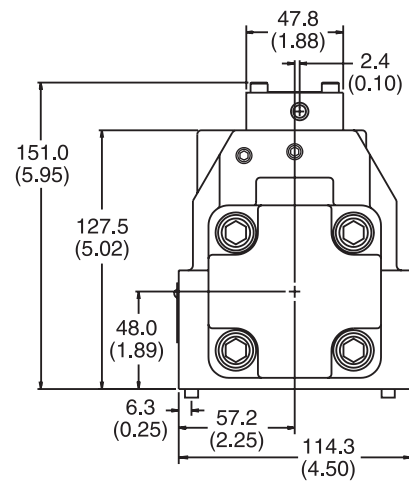
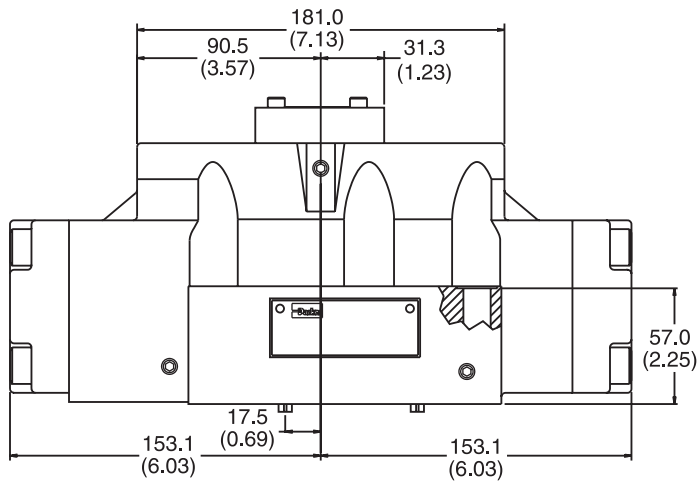
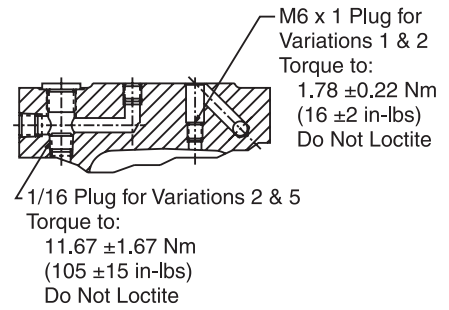
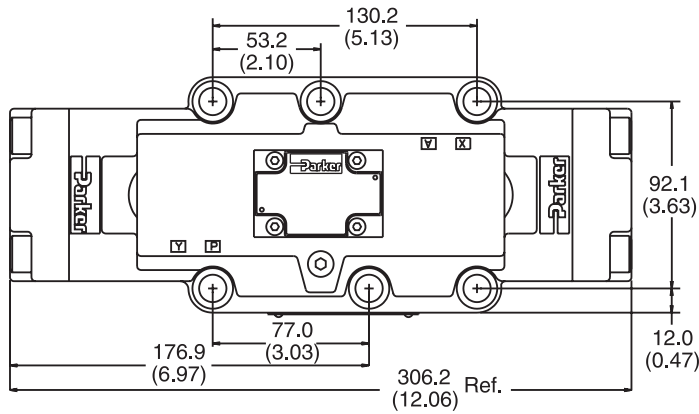
D81.indd, dd



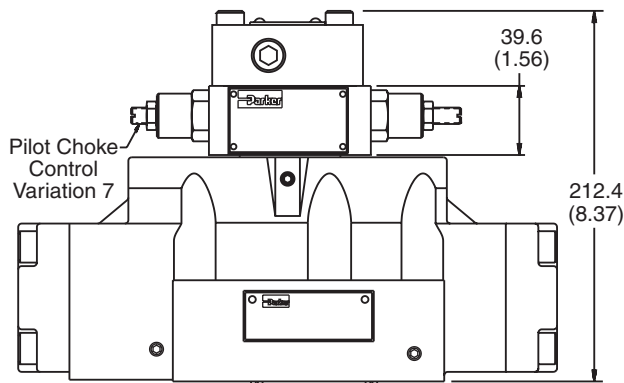
Inch equivalents for millimeter dimensions are shown in (\*\*)

**A**

**Standard Pilot Operated**



**Pilot Operated with Pilot Choke Control**



**Note:** 57mm (2.24") from bottom of bolt hole counterbore to bottom of valve.