

Parker FC, FD Series Throttle Sandwich Valve with Check Service Manual

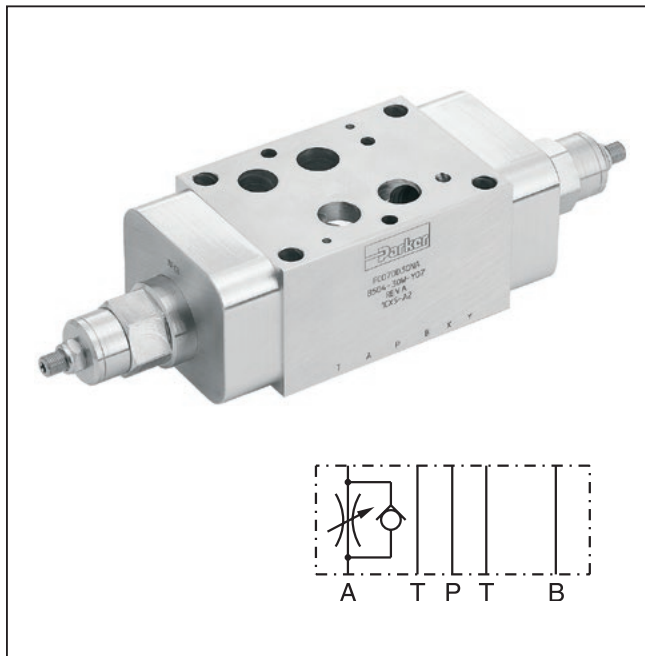
General Description

Series FC, FD throttle check valves are designed for maximum flow rates.

The throttle check function is located in ports A and B. Meter-in or meter-out functionality can be selected by model code.

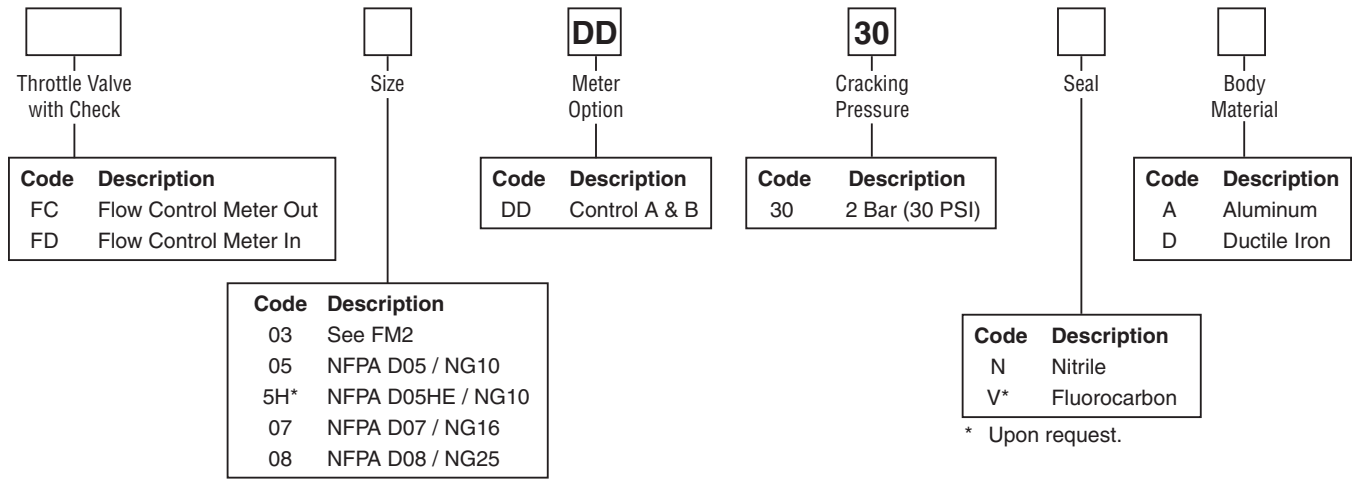
Features

- High flow capacity.
- Various functional arrangements.
- Sizes:
 - FC05, FD05 – NFPA D05 / NG10 / CETOP 5
 - FC05H, FD5H – NFPA D05HE / NG10 / CETOP 5H
 - FC07, FD07 – NFPA D07 / NG16 / CETOP 7
 - FC08, FD08 – NFPA D08 / NG25 / CETOP 8



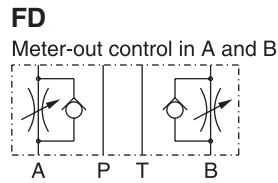
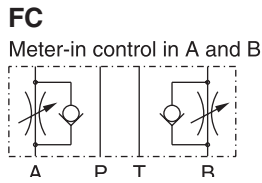
Specifications

General					
Size		D05 / NG10	D05HE / NG10	D07 / NG16	D08 / NG25
Mounting Position	Unrestricted				
Ambient Temperature Range	-20°C to +50°C (-4°F to +122°F)				
Hydraulic					
Maximum Operating Pressure	Aluminum Body – up to 207 Bar (3000 PSI); Ductile Iron Body – up to 345 Bar (5000 PSI)				
Nominal Flow	95 LPM (25 GPM)	95 LPM (25 GPM)	227 LPM (60 GPM)	454 LPM (120 GPM)	
Leakage	< 5 DPM	< 5 DPM	< 5 DPM	< 5 DPM	
Cracking Pressure	30 ± 0.2 Bar (3 PSI)				
Fluid Temperature	-20°C to +80°C (-4°F to +176°F)				
Viscosity	Permitted	10 to 650 cSt / mm ² /s (46 to 3013 SSU)			
	Recommended	30 cSt / mm ² /s (139 SSU)			
Filtration	ISO Class 4406 (1999) 18/16/13 (acc. NAS 1638: 7)				



* Valve comes with D05HE (ISO) pattern seal plate (990-120-012). If D05H pattern is required, order seal plate kit 990-120-009.

* Upon request.

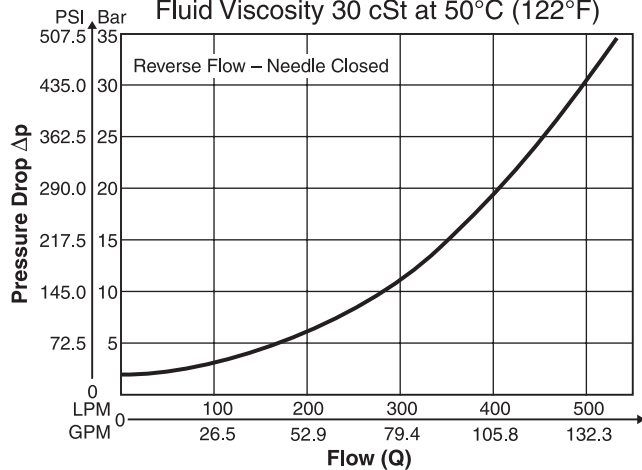


Weight:

Size	FC**DD30NA, FD**DD30NA	FC**DD30ND, FD**DD30ND
FC05, FC5H, FD05, FD5H	1.3 kg (2.9 lbs.)	2.6 kg (5.7 lbs.)
FC07	3.4 kg (7.6 lbs.)	6.9 kg (15.3 lbs.)
FC08	7.1 kg (15.7 lbs.)	14.7 kg (32.5 lbs.)

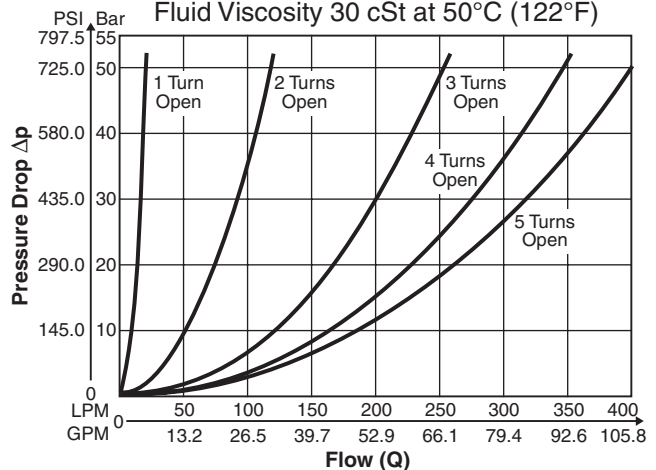
FC05/FC5H, FD05/FD5H

Pressure Differential vs. Free Flow
 Fluid Viscosity 30 cSt at 50°C (122°F)



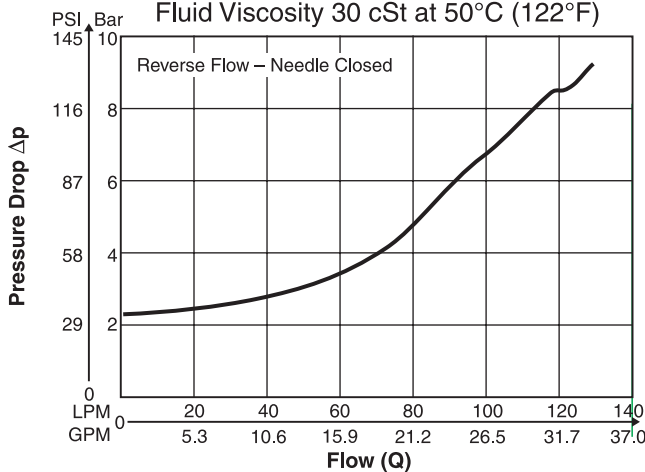
FC05/FC5H, FD05/FD5H

Pressure Differential vs. Metered Flow
 Fluid Viscosity 30 cSt at 50°C (122°F)



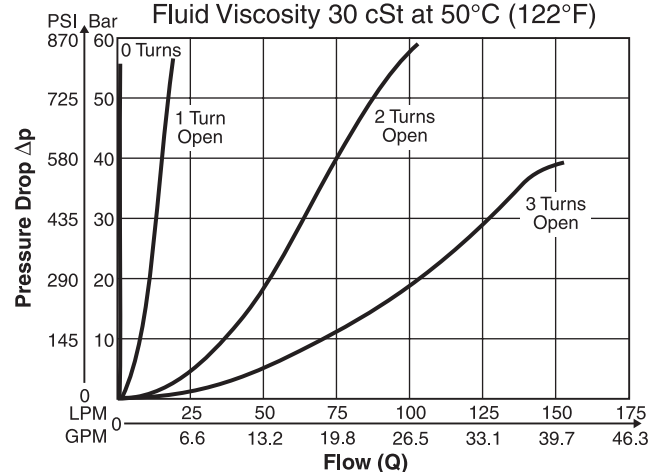
FC07, FD07

Pressure Differential vs. Free Flow
 Fluid Viscosity 30 cSt at 50°C (122°F)



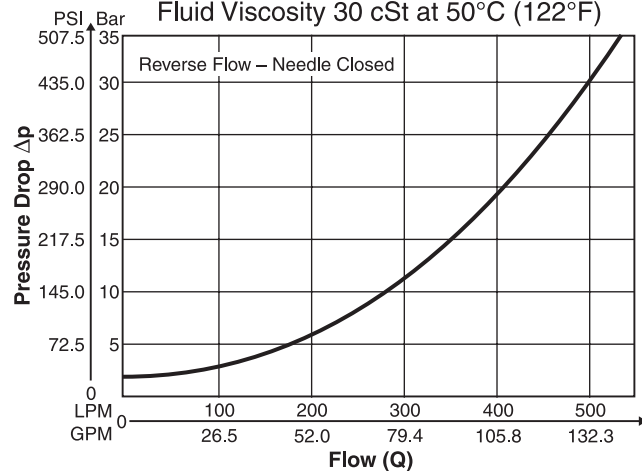
FC07, FD07

Pressure Differential vs. Metered Flow
 Fluid Viscosity 30 cSt at 50°C (122°F)



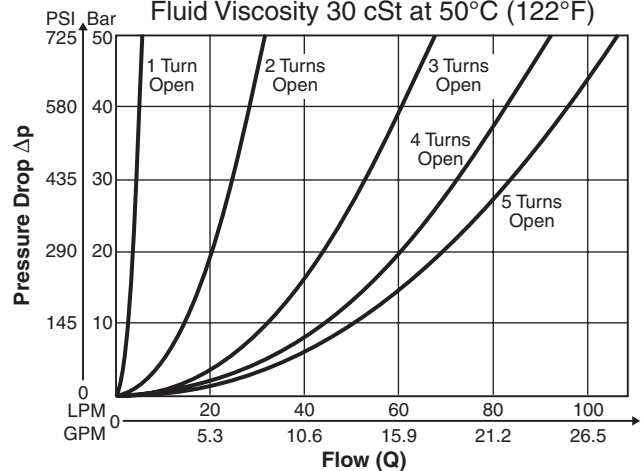
FC08, FD08

Pressure Differential vs. Free Flow
 Fluid Viscosity 30 cSt at 50°C (122°F)



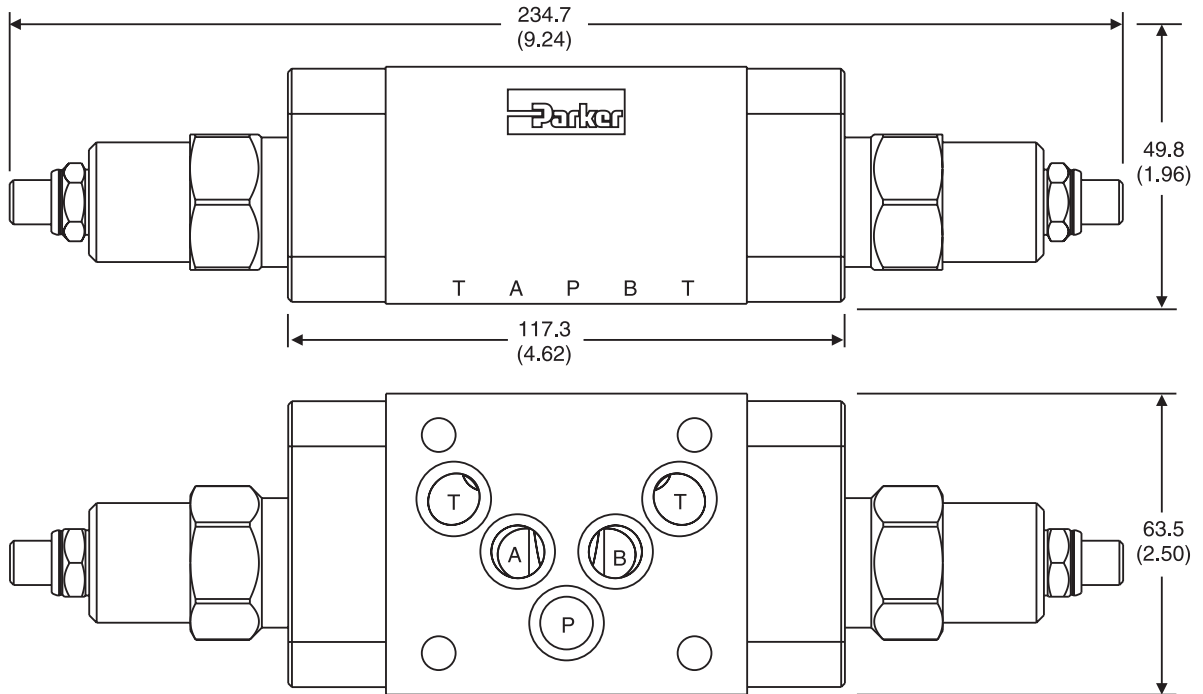
FC08, FD08

Pressure Differential vs. Metered Flow
 Fluid Viscosity 30 cSt at 50°C (122°F)

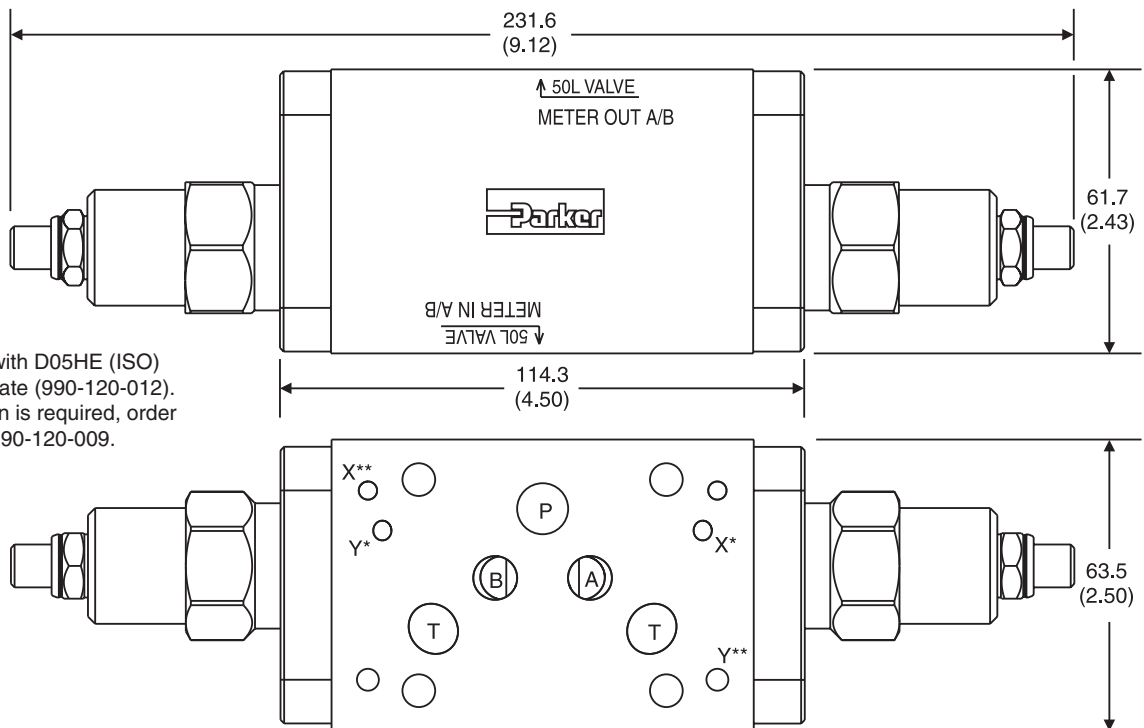


Dimensions

FC05DD – Inch equivalents for millimeter dimensions are shown in (**)



FC5HDD – Inch equivalents for millimeter dimensions are shown in (**)



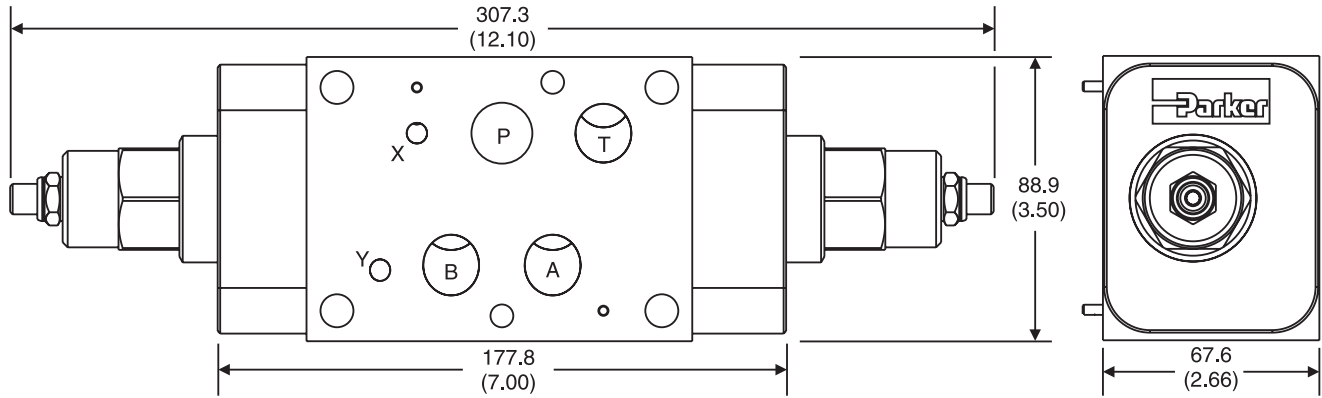
Valve comes with D05HE (ISO) pattern seal plate (990-120-012). If D05H pattern is required, order seal plate kit 990-120-009.

- * D05HE (Standard)
- ** D05H

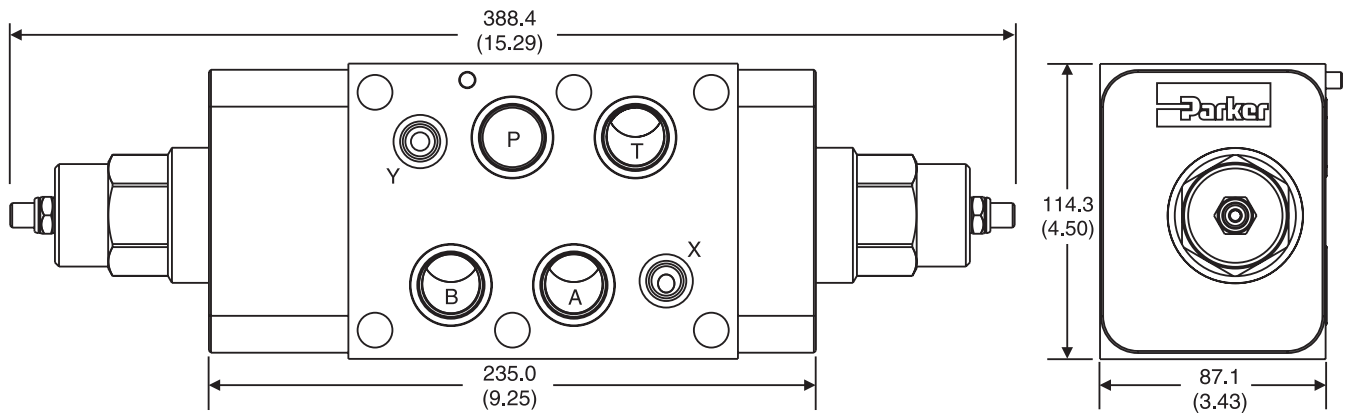


Dimensions

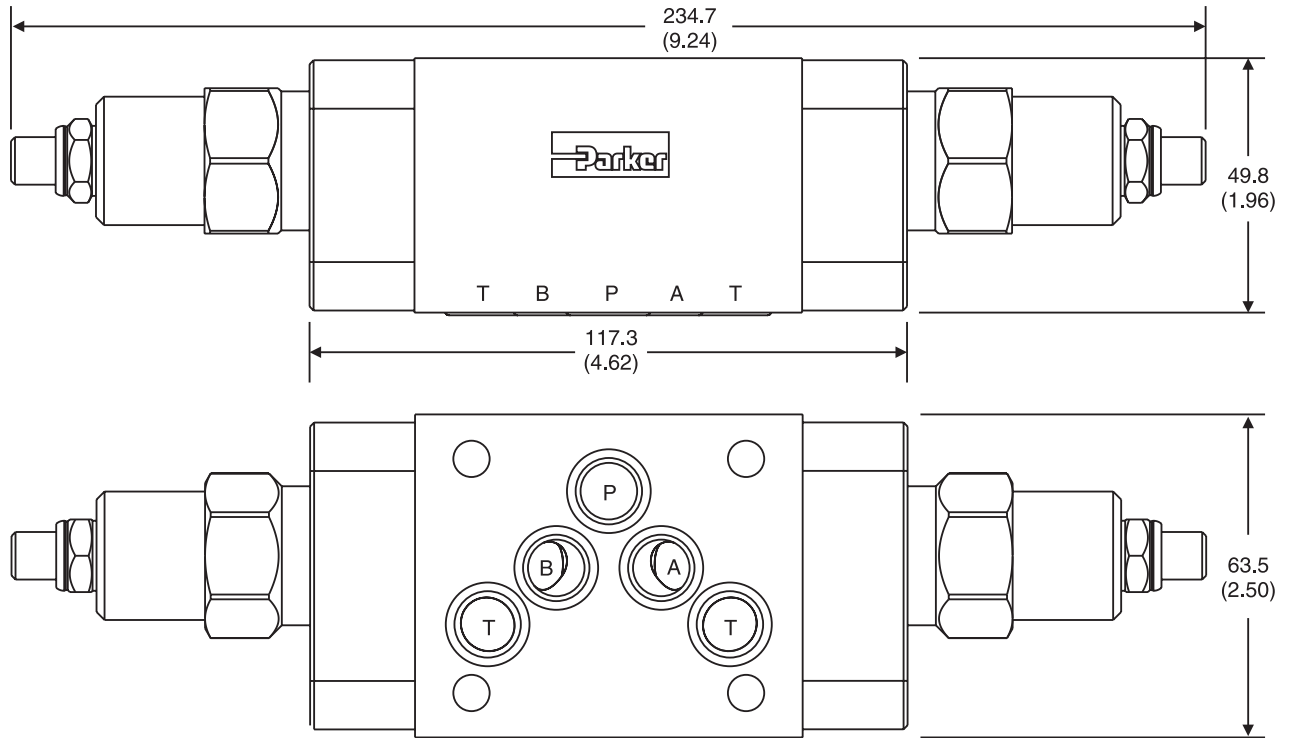
FC07DD – Inch equivalents for millimeter dimensions are shown in (**)



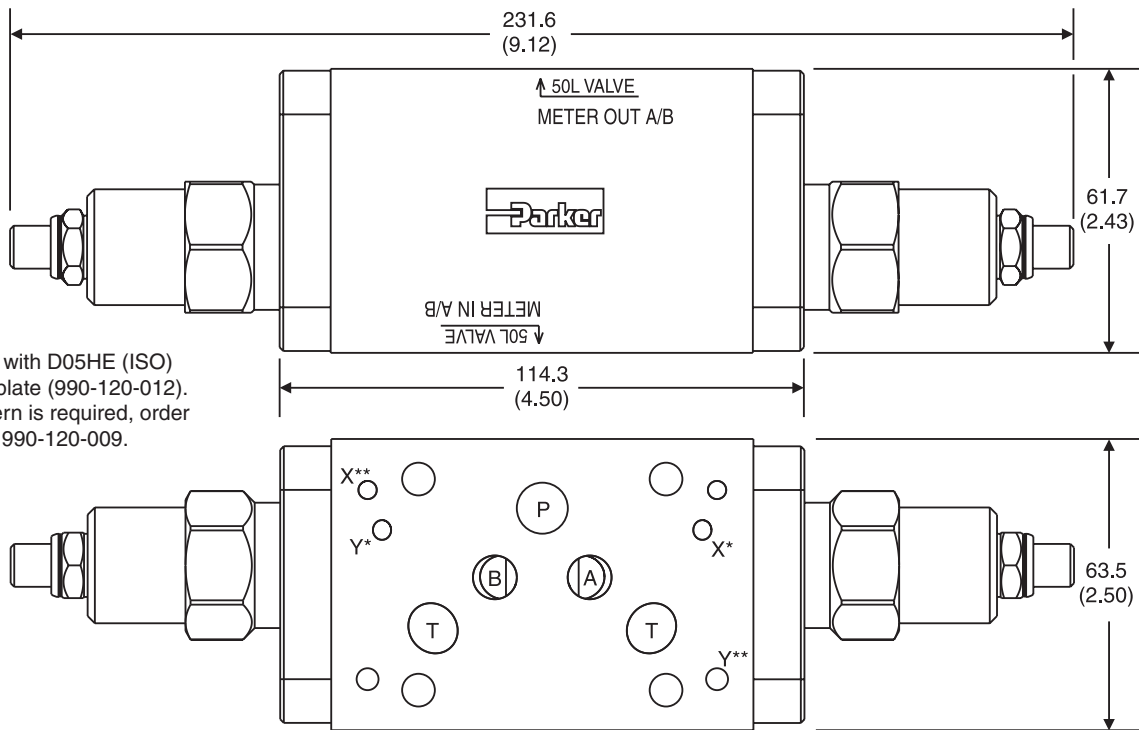
FC08DD – Inch equivalents for millimeter dimensions are shown in (**)



FD05DD – Inch equivalents for millimeter dimensions are shown in (**)



FD5HDD – Inch equivalents for millimeter dimensions are shown in (**)



Valve comes with D05HE (ISO) pattern seal plate (990-120-012). If D05H pattern is required, order seal plate kit 990-120-009.

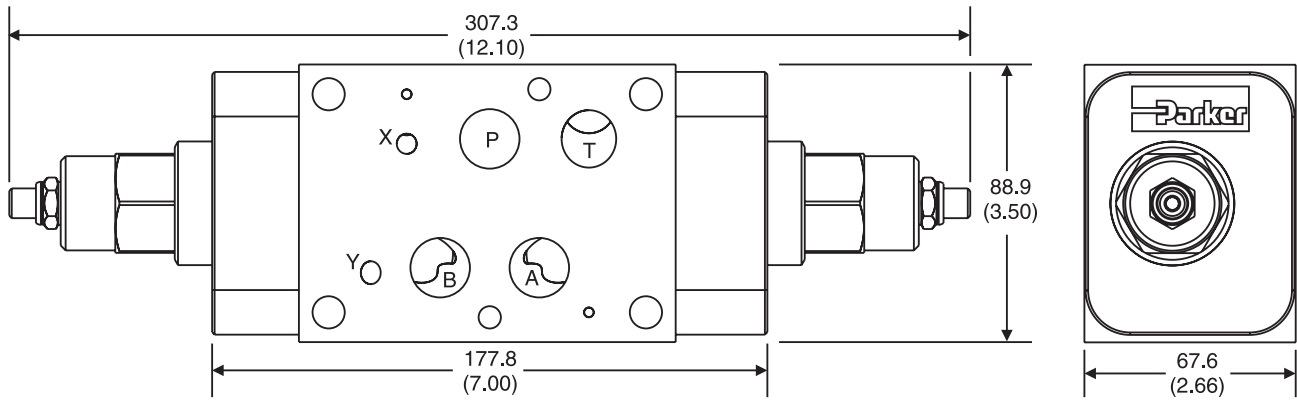
* D05HE (Standard)

** D05H



Dimensions

FD07DD – Inch equivalents for millimeter dimensions are shown in (**)



FD08DD – Inch equivalents for millimeter dimensions are shown in (**)

