

# Parker GF Series In-Line Gauge Isolator Valve Service Manual

## General Description

Series GF valves isolate gages from damage and inaccurate readings caused by line pressure surges and hydraulic hammer.

## Operation

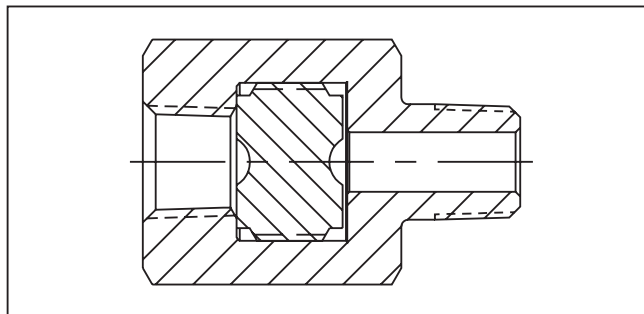
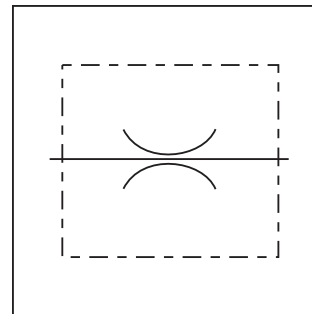
The GF uses a capillary orifice to smooth out line pulsations and surges without the use of any moving parts.

## Features

- One piece construction.
- The GF requires no adjustment or maintenance.

## Specifications

<b>Maximum Operating Pressure</b>	207 Bar (3000 PSI)
-----------------------------------	--------------------



## Ordering Information

Options	Series	Size
<b>Code</b> Description	<b>GF</b>	
Omit NPTF/SAE		
★9 BSPP		

★ Code 9 can be used with size 400

<b>Code</b> Description	
400 1/4"	
420 7/16 - 20 UNF (SAE 4)	

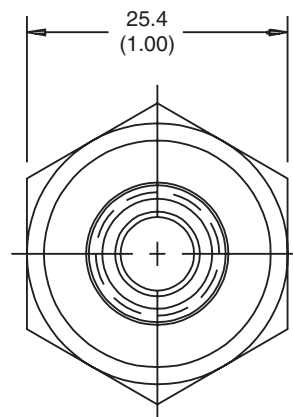
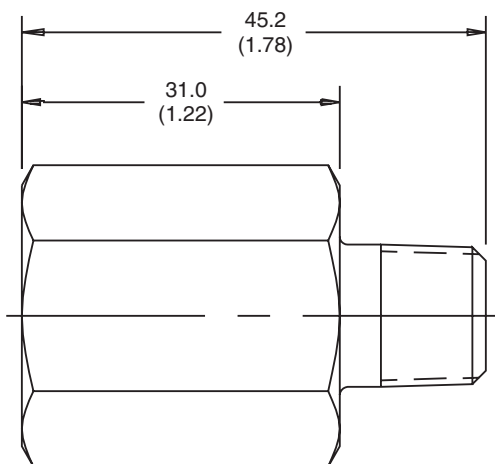
Material	
<b>S</b>	
<b>Code</b> Description	
S Steel	

Design Series  
NOTE:  
Not required when ordering.

**Weight:** 0.6 kg (1.3 lbs.)

## Dimensions

Inch equivalents for millimeter dimensions are shown in (\*\*)



**WARNING:** This product can expose you to chemicals including Lead, Nickel (Metallic), or 1,3-Butadiene which are known to the State of California to cause cancer, and Lead or 1,3-Butadiene which is known to the State of California to cause birth defects and other reproductive harm. For more information go to [www.P65Warnings.ca.gov](http://www.P65Warnings.ca.gov).

Cat3300\_02.indd, ddp, 04/19