

Parker Series CA Covers for 2-Way Slip-In Cartridge Valves Service Manual

Ordering Information

C
Cover

Nominal
Size

A
Cover with
X-Connection
and
Gauge Port
G1/4"

A
Without
Auxiliary
Function

Orifice

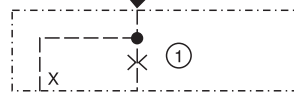
Seals

Design
Series
not required
for ordering

Code	Description
016	NG16
025	NG25
032	NG32
040	NG40
050	NG50
063	NG63
080	NG80
100	NG100

Code	Description
N	Nitrile
V	Fluorocarbon

Code	Description
99	Without Orifice, Open Orifice Options



○ Orifice position

Weight:

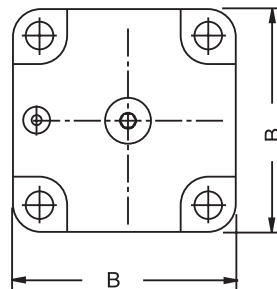
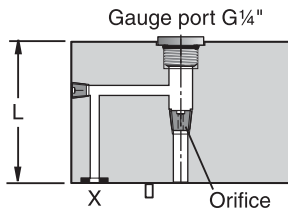
C016A	0.9 kg (2.0 lbs.)
C025A	1.9 kg (4.2 lbs.)
C032A	2.9 kg (6.4 lbs.)
C040A	5.3 kg (11.7 lbs.)
C050A	8.5 kg (18.7 lbs.)
C063A	15.5 kg (34.2 lbs.)
C080A	34.0 kg (75.0 lbs.)
C100A	58.0 kg (127.9 lbs.)

For orifice recommendations, bolt and seal kits, see Accessories.

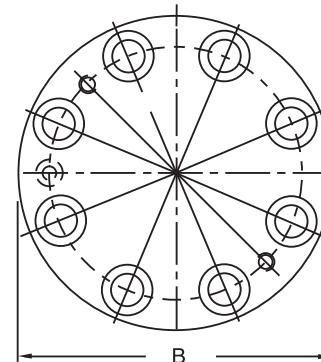
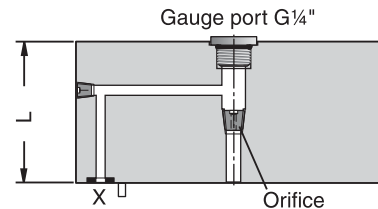
Dimensions

Inch equivalents for millimeter dimensions are shown in (**)

NG16 to NG63



NG80 to NG100



Size	B	L	Orifice Thread
NG16	65.0 (2.56)	36.0 (1.42)	1/16 NPT
NG25	85.0 (3.35)	45.0 (1.77)	1/16 NPT
NG32	102.0 (4.02)	50.0 (1.97)	1/16 NPT
NG40	125.0 (4.92)	60.0 (2.36)	1/8 NPT
NG50	140.0 (5.51)	70.0 (2.76)	1/8 NPT
NG63	180.0 (7.09)	85.0 (3.35)	1/8 NPT
NG80	Ø250.0 (9.84)	105.0 (4.13)	1/8 NPT
NG100	Ø300.0 (11.81)	120.0 (4.72)	1/8 NPT

CE-CP.indd, ddp

