

Parker Series CB CH Covers for 2-Way Slip-In Cartridge Valves Service Manual

Ordering Information

<div style="border: 1px solid black; width: 20px; height: 20px; margin: 0 auto; display: flex; align-items: center; justify-content: center; font-weight: bold;">C</div> Cover	<div style="border: 1px solid black; width: 20px; height: 20px; margin: 0 auto;"></div> Nominal Size	<div style="border: 1px solid black; width: 20px; height: 20px; margin: 0 auto; display: flex; align-items: center; justify-content: center; font-weight: bold;">B</div> Cover with X-Connection and Stroke Limiter	<div style="border: 1px solid black; width: 20px; height: 20px; margin: 0 auto;"></div> Adjustment	<div style="border: 1px solid black; width: 20px; height: 20px; margin: 0 auto;"></div> Orifice	<div style="border: 1px solid black; width: 20px; height: 20px; margin: 0 auto;"></div> Seals	<div style="border: 1px dashed black; width: 20px; height: 20px; margin: 0 auto; display: flex; align-items: center; justify-content: center;"> <div style="border: 1px dashed black; width: 10px; height: 10px; margin: 0 auto;"></div> </div> Design Series not required for ordering
---	---	--	---	--	--	---

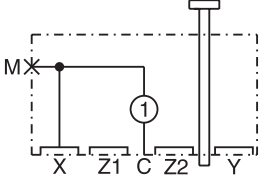
Code	Description
016	NG16
025	NG25
032	NG32
040	NG40
050	NG50
063	NG63
080	NG80
100	NG100

Code	Description
N	Screw / Spindle
Y	Knob E10 lock, only NG16-NG50

Code	Description
99	Without Orifice, Open Orifice Options

Code	Description
N	Nitrile
V	Fluorocarbon

	Weight: C016B 0.9 kg (2.0 lbs.) C025B 1.9 kg (4.2 lbs.) C032B 2.9 kg (6.4 lbs.) C040B 5.4 kg (11.9 lbs.) C050B 8.4 kg (18.5 lbs.) C063B 15.1 kg (33.3 lbs.) C080B 34.0 kg (75.0 lbs.) C100B 60.0 kg (132.3 lbs.)
--	---



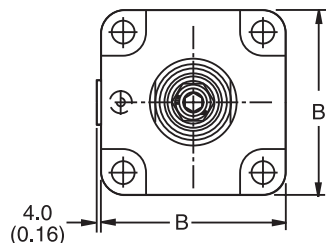
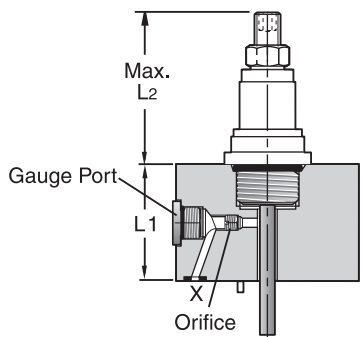
○ Orifice position

For orifice recommendations, bolt and seal kits, see Accessories.

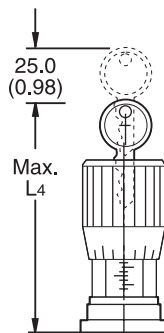
Dimensions

Inch equivalents for millimeter dimensions are shown in (**)

NG16 to NG25 - Adjustment N



Adjustment Y

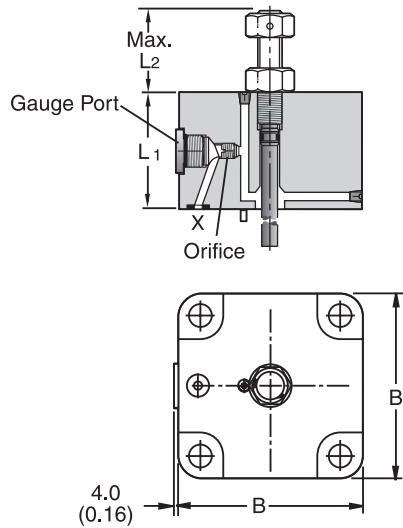


Size	B	L1	L2 max.	L4 max.	Gauge Port	Orifice Thread
NG16	65.0 (2.56)	36.0 (1.42)	72.0 (2.83)	100.0 (3.94)	G 1/4"	M6
NG25	85.0 (3.35)	45.0 (1.77)	72.0 (2.83)	100.0 (3.94)		

Dimensions

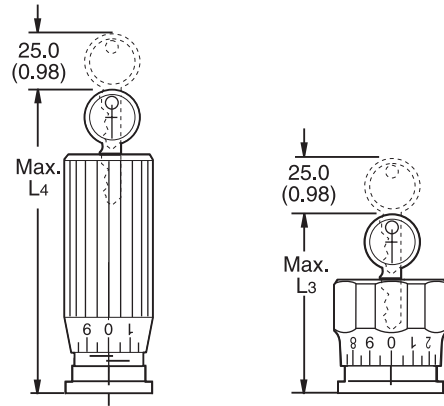
Inch equivalents for millimeter dimensions are shown in (**)

**NG32 to NG50
Adjustment N**

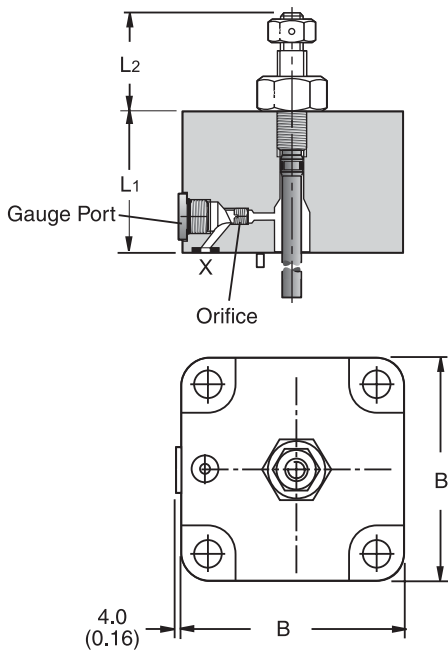


Adjustment Y (NG32)

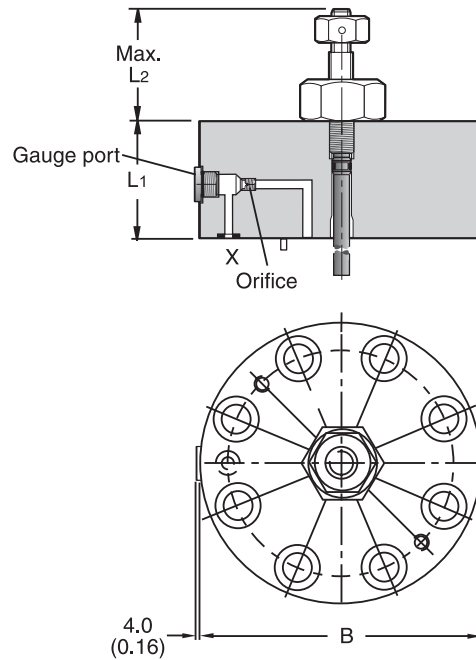
Adjustment Y (NG40/50)



**NG63
Adjustment N**



**NG80 to 100
Adjustment N**



Size	B	L1	L2 max.	L3	L4 max.	Gauge Port	Orifice Thread
NG32	102.0 (4.02)	50.0 (1.97)	48.0 (1.89)	—	141.0 (5.50)	G¼"	1/16 NPT
NG40	125.0 (4.92)	60.0 (2.36)	50.0 (1.97)	123.0 (4.84)	—		1/16 NPT
NG50	140.0 (5.51)	70.0 (2.76)	50.0 (1.97)	127.0 (5.00)	—		1/16 NPT
NG63	180.0 (7.09)	85.0 (3.35)	65.0 (2.56)	—	—		1/8 NPT
NG80	Ø250.0 (9.84)	105.0 (4.13)	95.0 (3.74)	—	—		1/8 NPT
NG100	Ø300.0 (11.81)	120.0 (4.72)	120.0 (4.72)	—	—		1/8 NPT

CE-CP.indd, ddp