

Parker Series CC Covers for 2-Way Slip-In Cartridge Valves Service Manual

Ordering Information

C
Cover

Nominal Size

C
Cover for Pilot System Mounting

A
Without Auxiliary Function

① ② ③ ④
Orifice / Choke

Seals

Design Series
not required for ordering

Code	Description
016	NG16
025	NG25
032	NG32
040	NG40
050	NG50
063	NG63
080	NG80
100	NG100

Code	Description
N	Nitrile
V	Fluorocarbon

Code	Description
99	Without Orifice, Open Orifice Options
00	Plug, Closed Orifice Options

Weight:

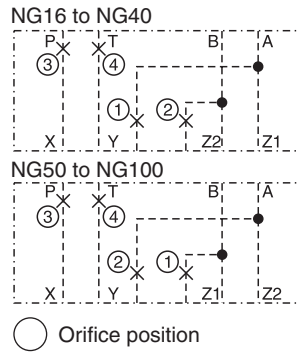
C016C	1.0 kg (2.12 lbs.)
C025C	1.9 kg (4.20 lbs.)
C032C	2.9 kg (6.40 lbs.)
C040C	5.3 kg (11.70 lbs.)
C050C	8.5 kg (18.70 lbs.)
C063C	15.3 kg (33.70 lbs.)
C080C	34.0 kg (75.0 lbs.)
C100C	60.0 kg (132.30 lbs.)

Attention:

For NG50 and larger:

If pilot system NG06 is used, mount adapter plate PADA 1007/A-B/B-A or PADA 1007/A-A/B-B (NG10 to NG06) on cover.

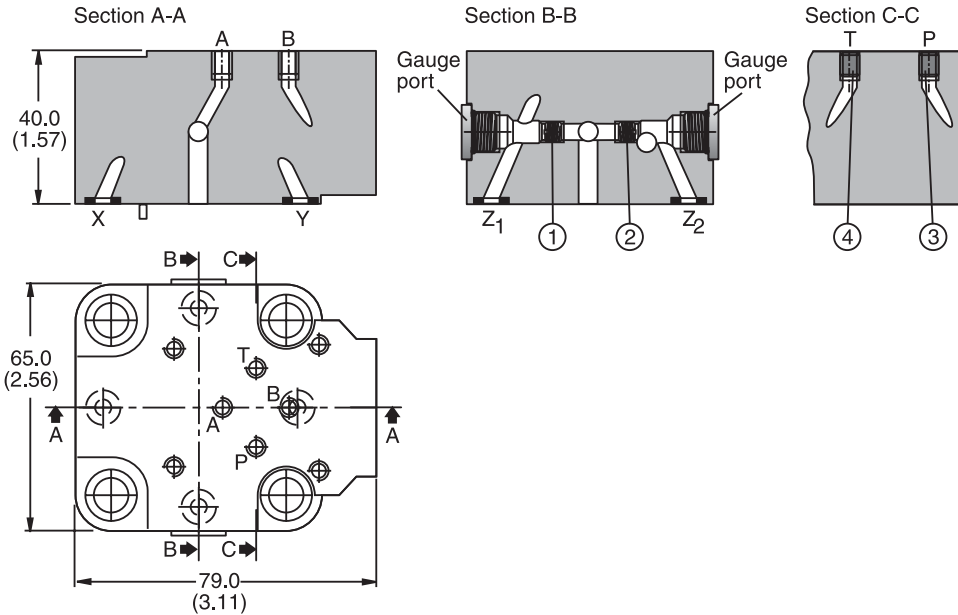
For orifice recommendations, bolt and seal kits, see Accessories.



Dimensions

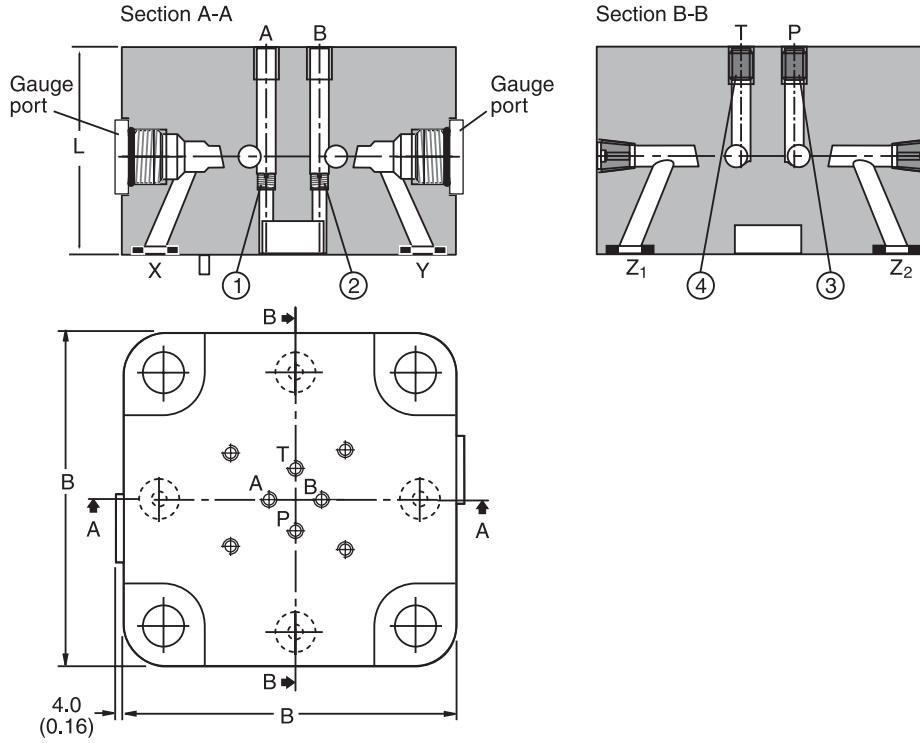
Inch equivalents for millimeter dimensions are shown in (**)

NG16

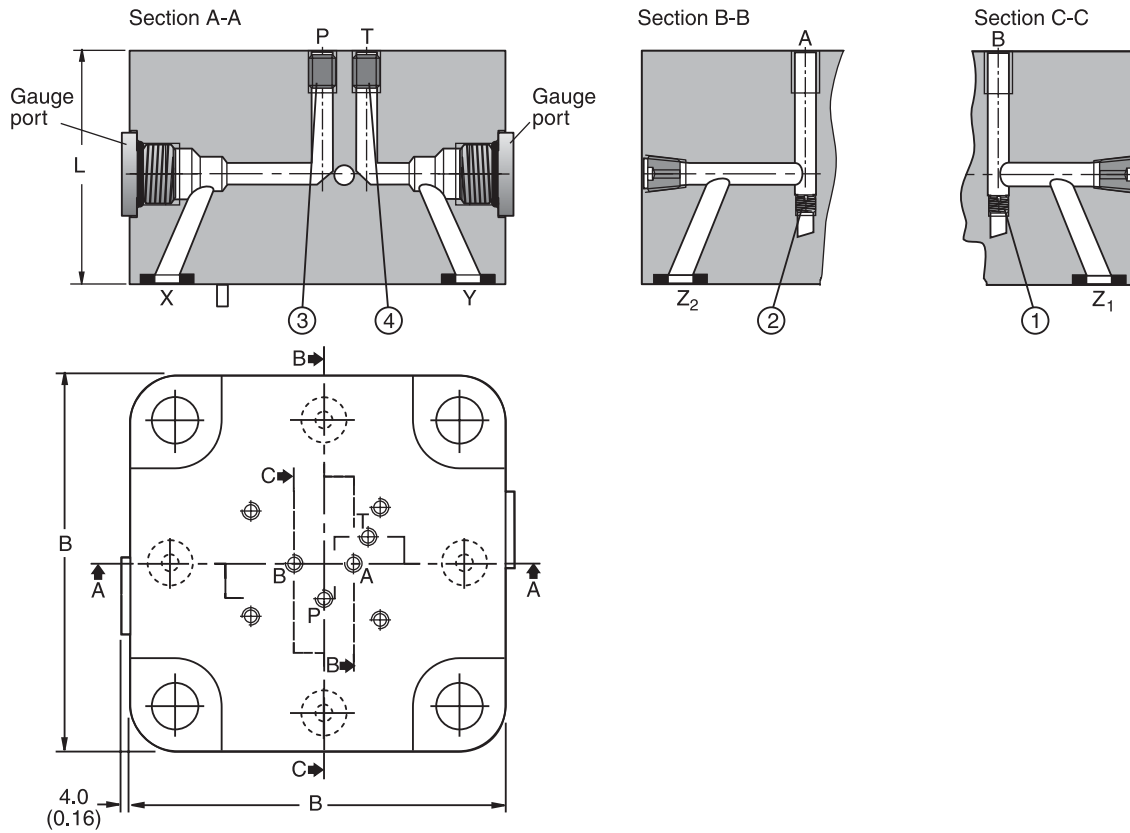


Inch equivalents for millimeter dimensions are shown in (**)

NG25 to NG40

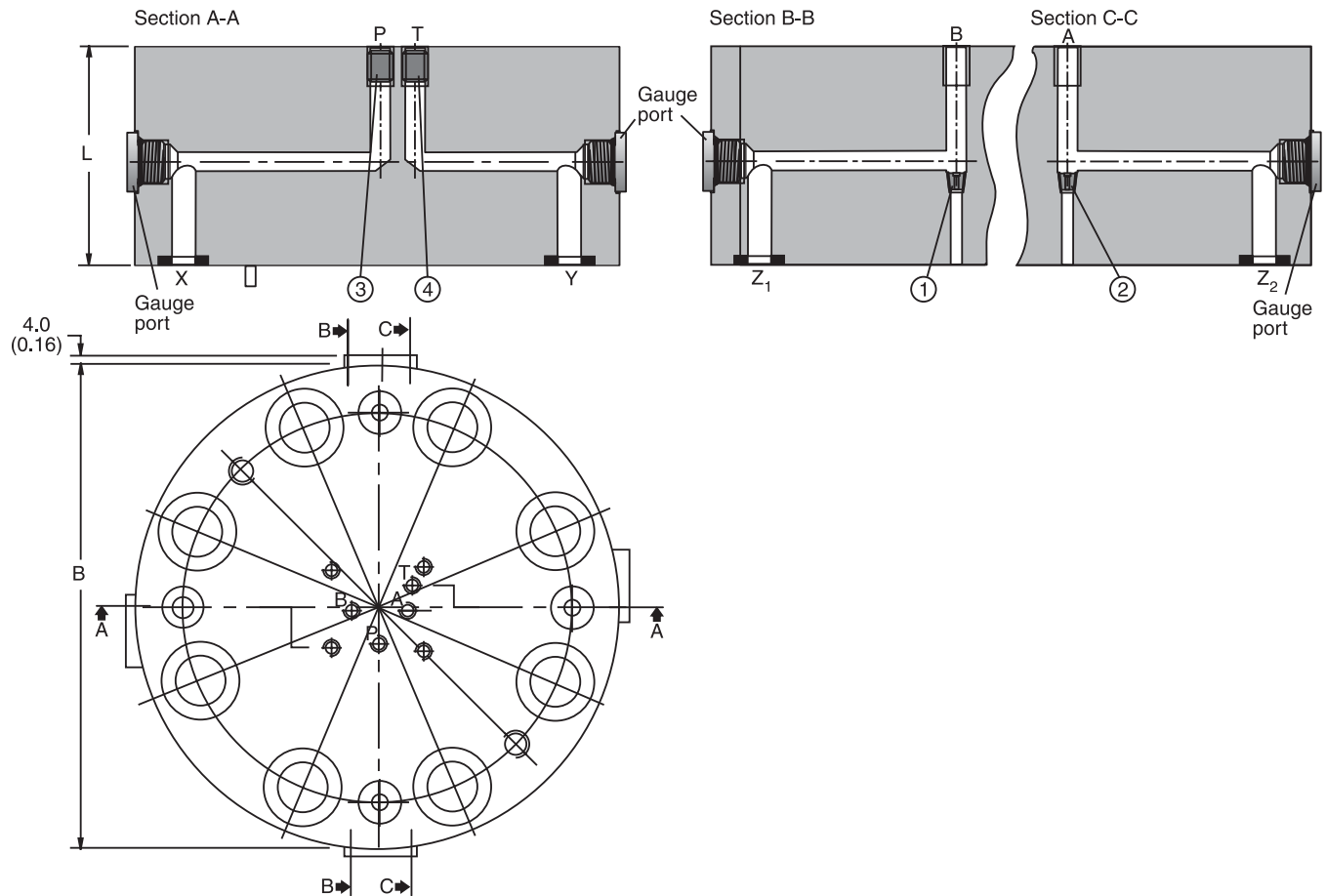


NG50 to NG63



Inch equivalents for millimeter dimensions are shown in (**)

NG80 to NG100



Size	B	L	Gauge Port	Orifice Thread			
				①	②	③	④
NG16	79.0 ¹⁾ (3.11)	40.0 (1.57)	G 1/4"	M5	M5	M5	M5
NG25	85.0 (3.35)	45.0 (1.77)		M5	M5	M6	M6
NG32	102.0 (4.02)	50.0 (1.97)		M5	M5	M6	M6
NG40	125.0 (4.92)	60.0 (2.36)		M5	M5	M6	M6
NG50	140.0 (5.51)	70.0 (2.76)		M6	M6	M8	M8
NG63	180.0 (7.09)	85.0 (3.35)		M6	M6	M8	M8
NG80	Ø250.0 (9.81)	105.0 (4.13)		1/16 NPT	1/16 NPT	M10x1	M10x1
NG100	Ø300.0 (11.81)	120.0 (4.72)		1/16 NPT	1/16 NPT	M10x1	M10x1

¹⁾ Width 65m (2.56 in.)