

# Parker Series CW Covers for 2-Way Slip-In Cartridge Valve Service Manual

## Ordering Information

**C**  
Cover

Nominal Size

**W**  
Cover with Shuttle Valve and Pilot System Mounting

**A**  
Without Additional Option

① ② ③ ④  
Orifice / Choke

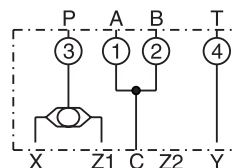
Seals

Design Series not required for ordering

| Code | Description |
|------|-------------|
| 016  | NG16        |
| 025  | NG25        |
| 032  | NG32        |
| 040  | NG40        |
| 050  | NG50        |
| 063  | NG63        |

| Code | Description  |
|------|--------------|
| N    | Nitrile      |
| V    | Fluorocarbon |

| Code | Description                           |
|------|---------------------------------------|
| 99   | Without Orifice, Open Orifice Options |

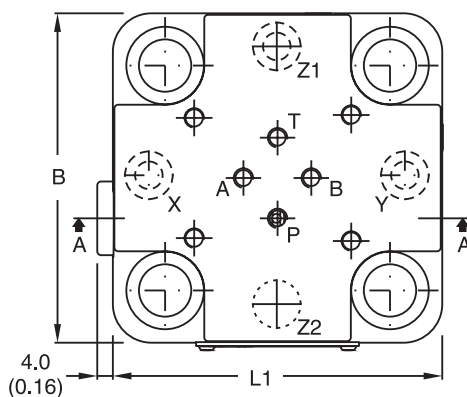
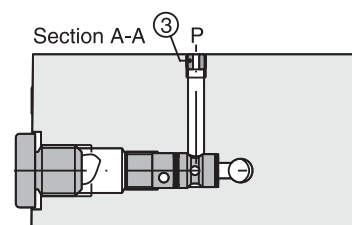
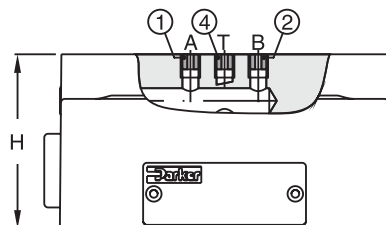


○ Orifice position

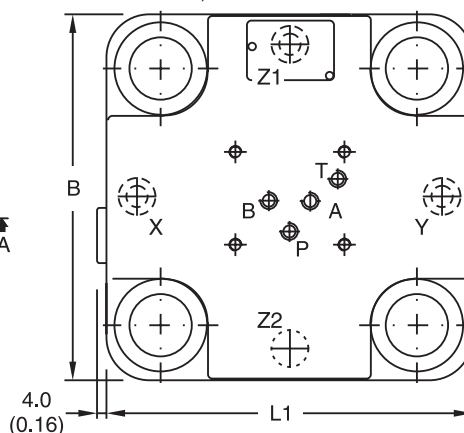
For orifice recommendations, bolt and seal kits, see Accessories.

## Dimensions

Inch equivalents for millimeter dimensions are shown in (\*\*)



For NG50, NG63



Port Z2: O-ring recess diameter on valve body

| Size | B            | H           | L1           | Orifice Thread |    |    |    |
|------|--------------|-------------|--------------|----------------|----|----|----|
|      |              |             |              | ①              | ②  | ③  | ④  |
| NG16 | 65.0 (2.56)  | 40.0 (1.57) | 79.0 (3.11)  | M5             | M5 | M5 | M5 |
| NG25 | 85.0 (3.35)  | 45.0 (1.77) | 85.0 (3.35)  | M5             | M5 | M5 | M5 |
| NG32 | 102.0 (4.02) | 50.0 (1.97) | 102.0 (4.02) | M5             | M5 | M5 | M5 |
| NG40 | 125.0 (4.92) | 60.0 (2.36) | 125.0 (4.92) | M6             | M6 | M6 | M6 |
| NG50 | 140.0 (5.51) | 70.0 (2.76) | 140.0 (5.51) | M8             | M8 | M8 | M8 |
| NG63 | 180.0 (7.09) | 85.0 (3.35) | 180.0 (7.09) | M8             | M8 | M8 | M8 |