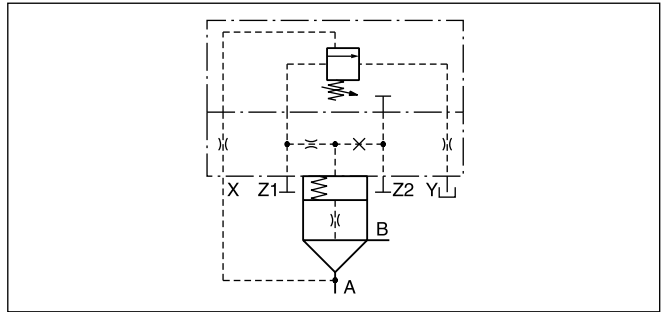
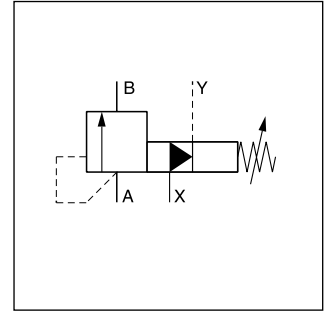


Parker Series DSDU Pilot Operated Pressure Relief Valve Service Manual

The pilot operated pressure relief valves series DSDU limit the system pressure by opening the pressure port to tank. They are mostly used for accumulator pressure relief. The valve is set and sealed by the German technical monitoring association TÜV. The valve delivery includes a copy of the TÜV certificate of conformity.

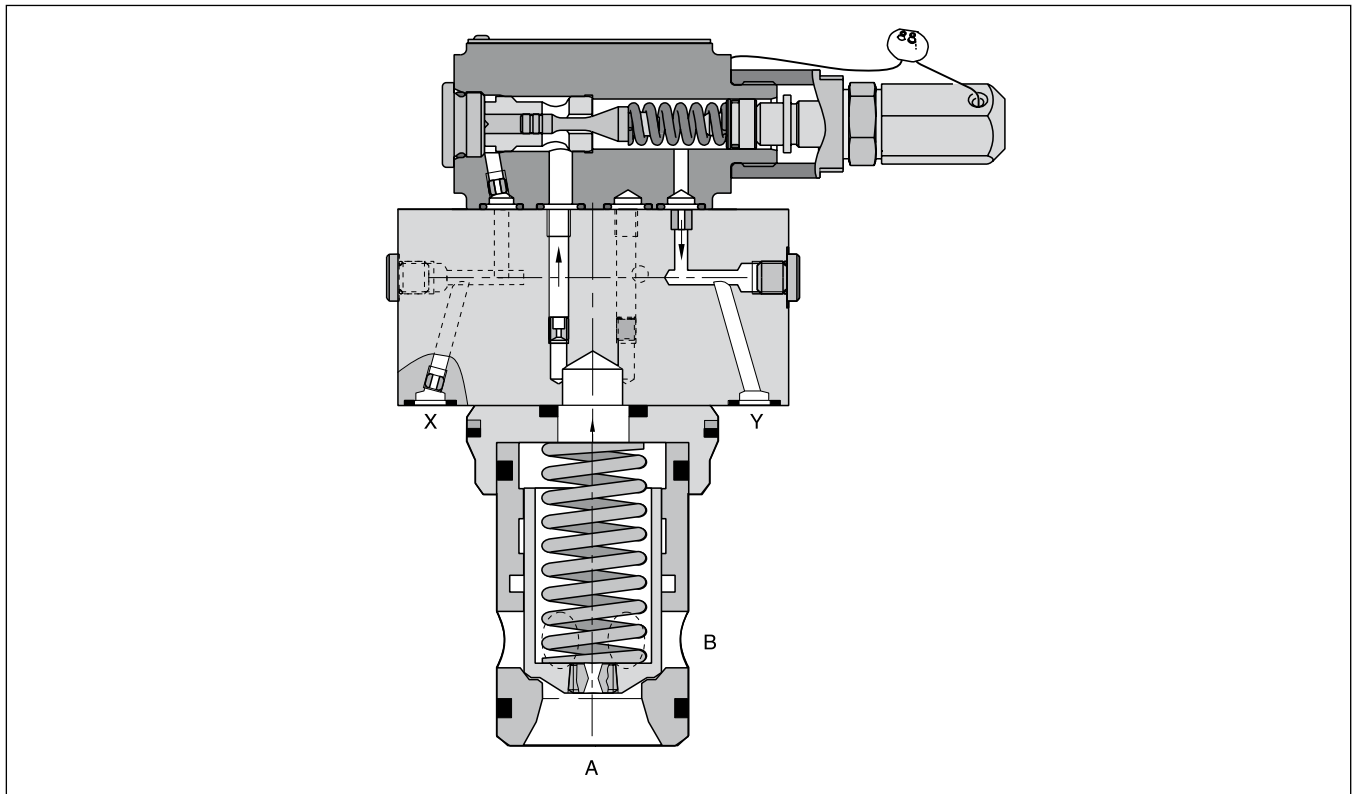
Features

- TÜV certificate
- CE certification (module G) according to directive 2014/68/EU
- Installation cavity and mounting pattern according to ISO 7368
- 3 sizes, NG16 to NG32
- Remote control via port X



Detailed symbol

8



Ordering code

	Seals	DSDU Pressure relief valve	Type code	Pressure stage	TÜV	Desired opening pressure in bar (please specify)																																											
			<table border="1" style="width: 100%; border-collapse: collapse;"> <tr><th colspan="3">Type Code</th></tr> <tr><th>1078 E16</th><th>1078 E25</th><th>1078 E32</th></tr> <tr><th colspan="3">Q_{max} [l/min] depending on opening pressure</th></tr> <tr><td>150</td><td>215</td><td>500</td></tr> <tr><td>165</td><td>235</td><td>550</td></tr> <tr><td>190</td><td>280</td><td>640</td></tr> <tr><td>215</td><td>310</td><td>750</td></tr> <tr><td>230</td><td>355</td><td>800</td></tr> <tr><td>255</td><td>390</td><td>900</td></tr> <tr><td>280</td><td>400</td><td>950</td></tr> </table>	Type Code			1078 E16	1078 E25	1078 E32	Q _{max} [l/min] depending on opening pressure			150	215	500	165	235	550	190	280	640	215	310	750	230	355	800	255	390	900	280	400	950	<table border="1" style="width: 100%; border-collapse: collapse;"> <tr><th>Pressure stage</th></tr> <tr><td>B</td></tr> <tr><td>E</td></tr> <tr><td>G</td></tr> <tr><td>K</td></tr> </table>	Pressure stage	B	E	G	K		<table border="1" style="width: 100%; border-collapse: collapse;"> <tr><th>Opening pressure ranges [bar]</th></tr> <tr><td>50 - 75</td></tr> <tr><td>76 - 125</td></tr> <tr><td>126 - 175</td></tr> <tr><td>176 - 200</td></tr> <tr><td>201 - 250</td></tr> <tr><td>251 - 300</td></tr> <tr><td>301 - 350</td></tr> </table>	Opening pressure ranges [bar]	50 - 75	76 - 125	126 - 175	176 - 200	201 - 250	251 - 300	301 - 350
Type Code																																																	
1078 E16	1078 E25	1078 E32																																															
Q _{max} [l/min] depending on opening pressure																																																	
150	215	500																																															
165	235	550																																															
190	280	640																																															
215	310	750																																															
230	355	800																																															
255	390	900																																															
280	400	950																																															
Pressure stage																																																	
B																																																	
E																																																	
G																																																	
K																																																	
Opening pressure ranges [bar]																																																	
50 - 75																																																	
76 - 125																																																	
126 - 175																																																	
176 - 200																																																	
201 - 250																																																	
251 - 300																																																	
301 - 350																																																	
	<table border="1" style="width: 100%; border-collapse: collapse;"> <tr><th>Code</th><th>Seals</th></tr> <tr><td>omit</td><td>NBR</td></tr> <tr><td>V</td><td>FPM</td></tr> </table>	Code	Seals	omit	NBR	V	FPM																																										
Code	Seals																																																
omit	NBR																																																
V	FPM																																																

Ordering examples

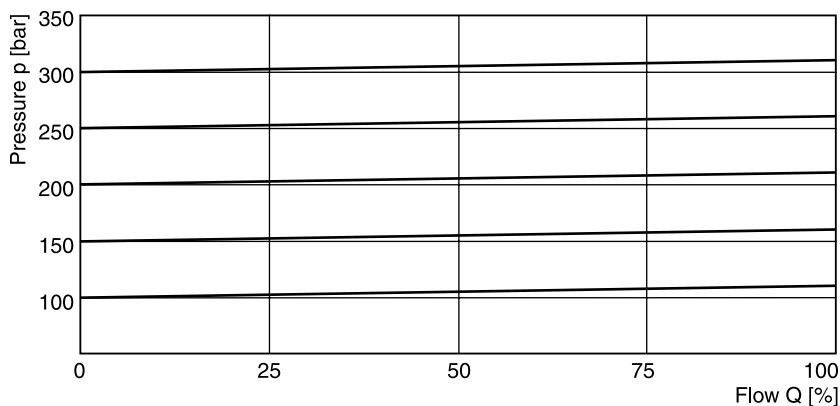
DSDU 1078 E32E - 120 bar matches Q_{max} 550 l/min, opening pressure 120 bar

DSDU 1078 E32E - 150 bar matches Q_{max} 640 l/min, opening pressure 150 bar

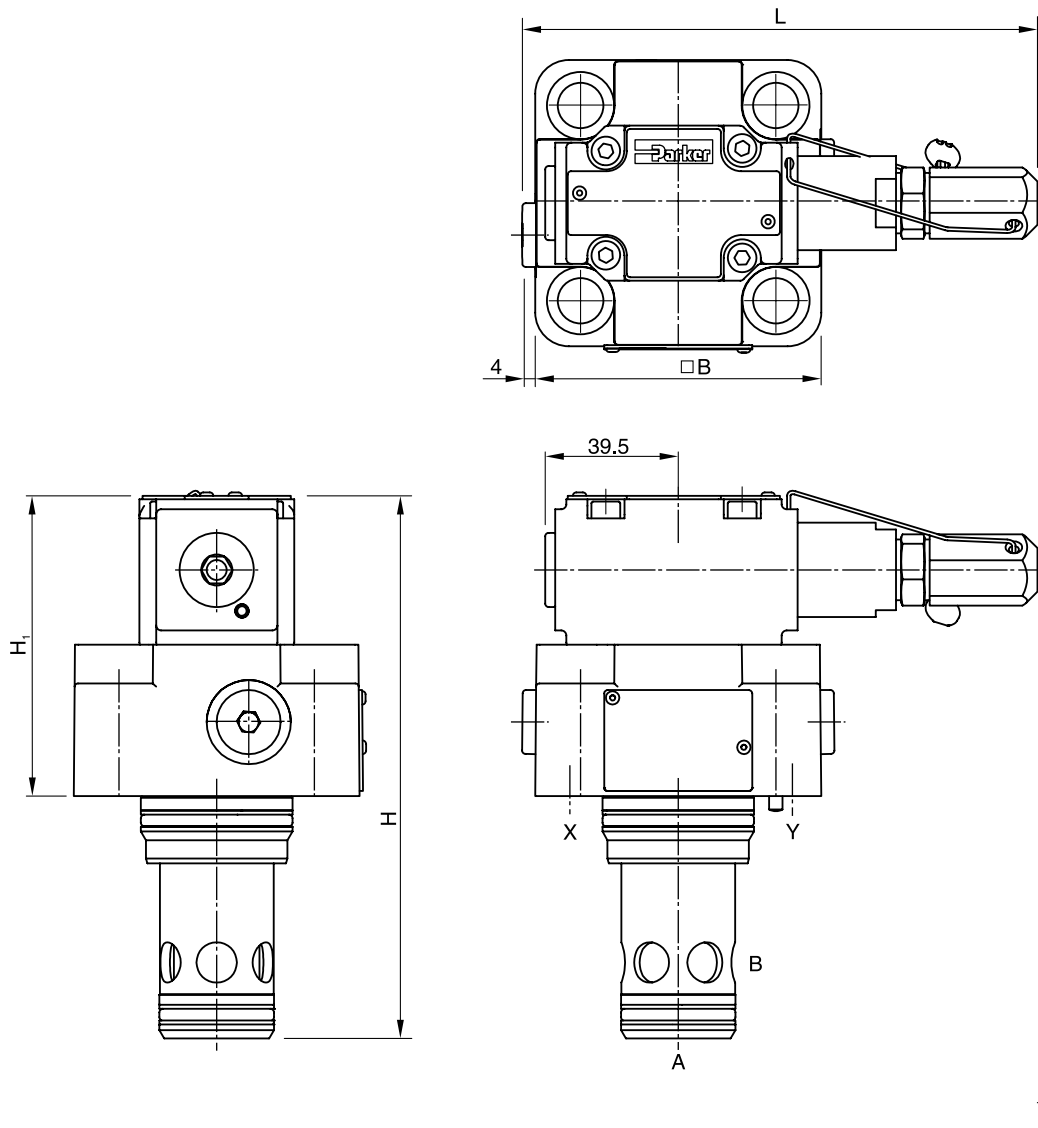
Technical data

General				
Size		NG16	NG25	NG32
Interface		Slip-in mounting according to ISO 7368		
Mounting position		as desired, horizontal mounting preferred		
Ambient temperature	[°C]	-20...+60		
MTTF _D value	[years]	150		
Weight	[kg]	2.2	3.5	4.9
Hydraulic				
Max. operating pressure	[bar]	Ports A and X 350, B and Y depressurized		
Pilot oil		External / external		
Adjustment pressure	[bar]	See ordering code		
Nominal flow	[l/min]	See ordering code		
Fluid		Hydraulic oil according to DIN 51524		
Fluid temperature	[°C]	-10...+70		
Viscosity, permitted	[cSt] / [mm ² /s]	20...400		
Viscosity, recommended	[cSt] / [mm ² /s]	30...80		
Filtration		ISO 4406; 18/16/13		

p/Q curve






Dimensions



8

NG	H	H ₁	B	L
16	141	85	79 *	162
25	162	90	85	156
32	182	97	102	162

NG	Kit	 ISO 4762-12.9	 [Nm]	 Kit	
				NBR	FPM
16	BK414	4 x M8x40	31.8	SK-DSDU10-E16	SK-DSDU10-E16V
25	BK391	4 x M12x50	108	SK-DSDU10-E25	SK-DSDU10-E25V
32	BK415	4 x M16x55	264	SK-DSDU10-E32	SK-DSDU10-E32V

* Width 65 mm.