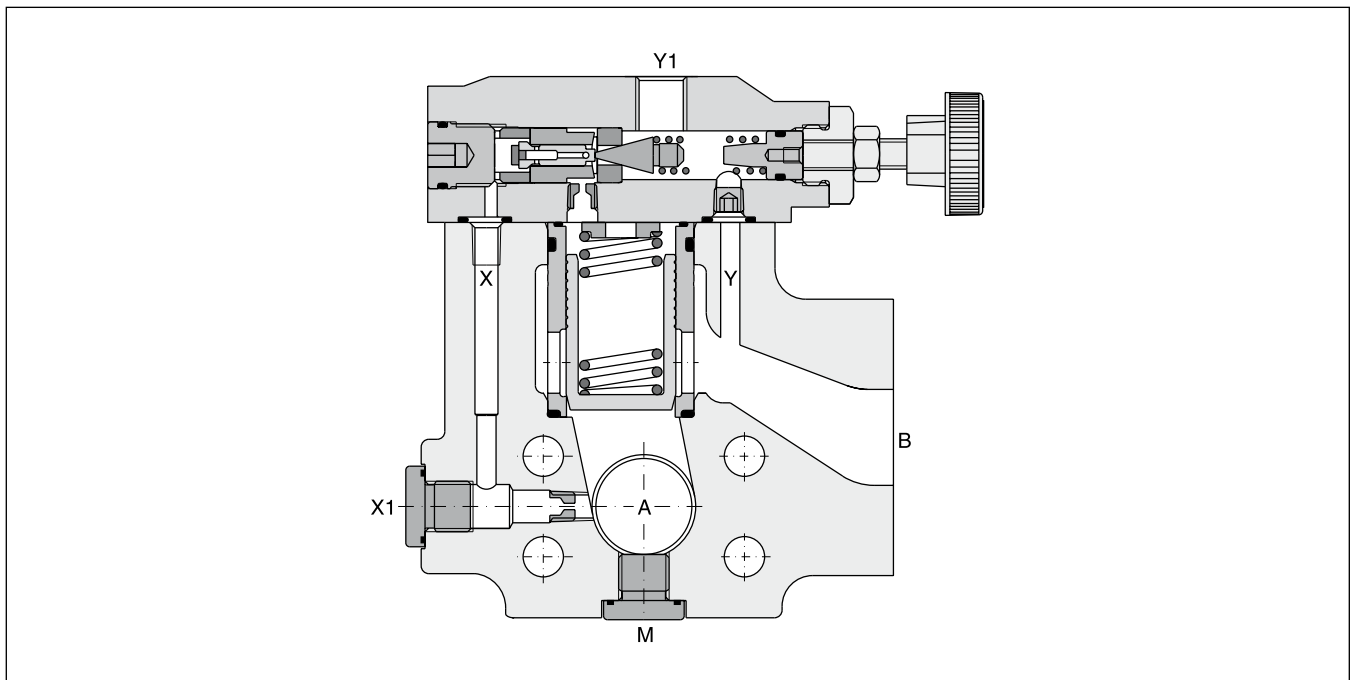
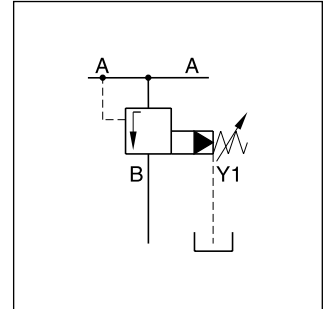


Parker Series R5S Pilot Operated Sequence Valve, SAE Flange Service Manual

Pilot operated sequence valves series R5S have a similar design to the subplate mounted R4S series. The SAE flanges allow to mount the valve directly on the inlet flanges of actuators or outlet flanges of pumps to achieve a very compact design.

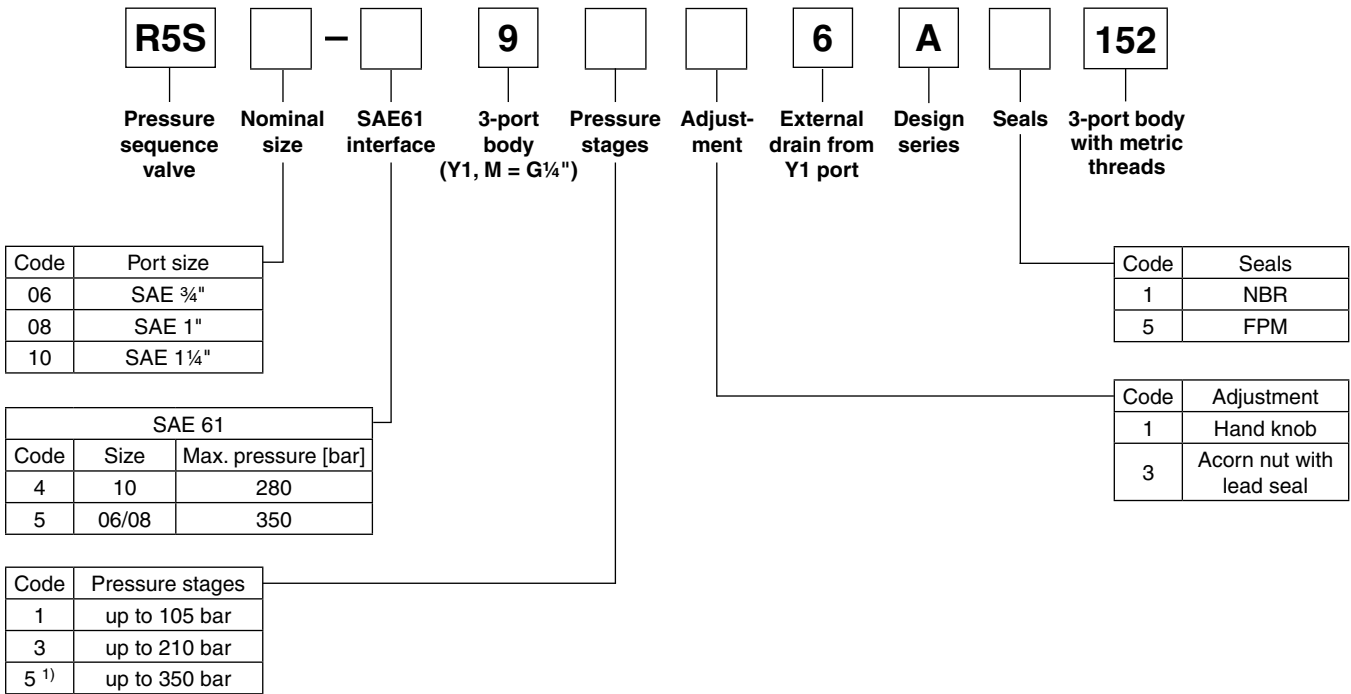
Features

- Pilot operated with manual adjustment
- 3-port body with SAE61 flange
- 3 sizes (SAE 3/4", 1", 1 1/4")
- 3 pressure stages
- 2 adjustment modes
 - Hand knob
 - Acorn nut with lead seal
- Optional with vent function (on request)



Ordering Code / Technical Data

Ordering code



Further options on request

¹⁾ R5S10-495 up to 280 bar.

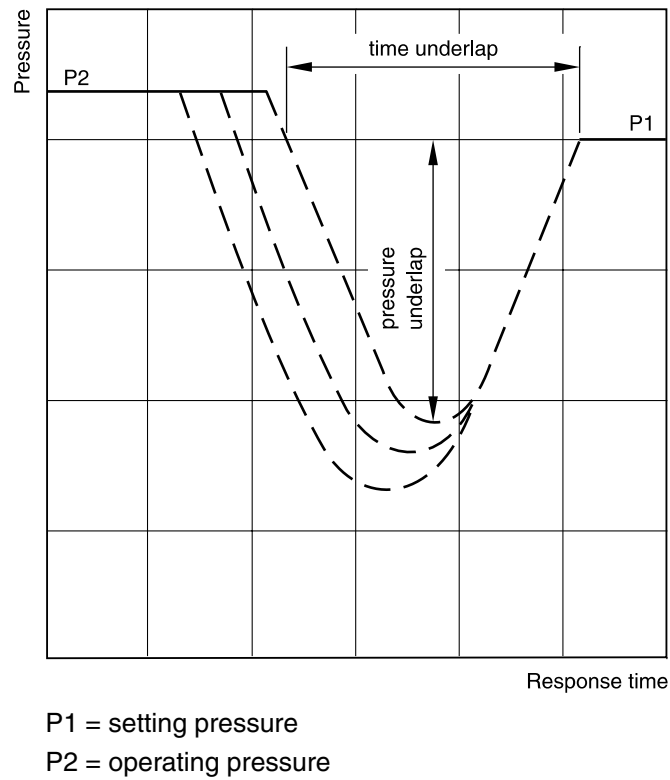
9

Technical data

General				
Size		06 (¾")	08 (1")	10 (1¼")
Mounting		Flanged according to SAE61		
Mounting position		unrestricted		
Ambient temperature	[°C]	-20...+60		
MTTF _D value	[years]	75		
Weight	[kg]	3.6	4.6	5.2
Hydraulic				
Max. operating pressure	[bar]			
	Ports A, B	350	350	280
	Ports Y, Y1	30	30	30
Pressure stages	[bar]	105, 210, 350		
Nominal flow	[l/min]	90	300	600
Fluid		Hydraulic oil according to DIN 51524		
Fluid temperature	[°C]	-20...+70 (NBR: -25...+70)		
Viscosity	permitted	[cSt] / [mm²/s]	20 ... 400	
	recommended	[cSt] / [mm²/s]	30...80	
Filtration		ISO 4406 (1999); 18/16/13		

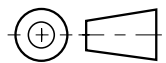
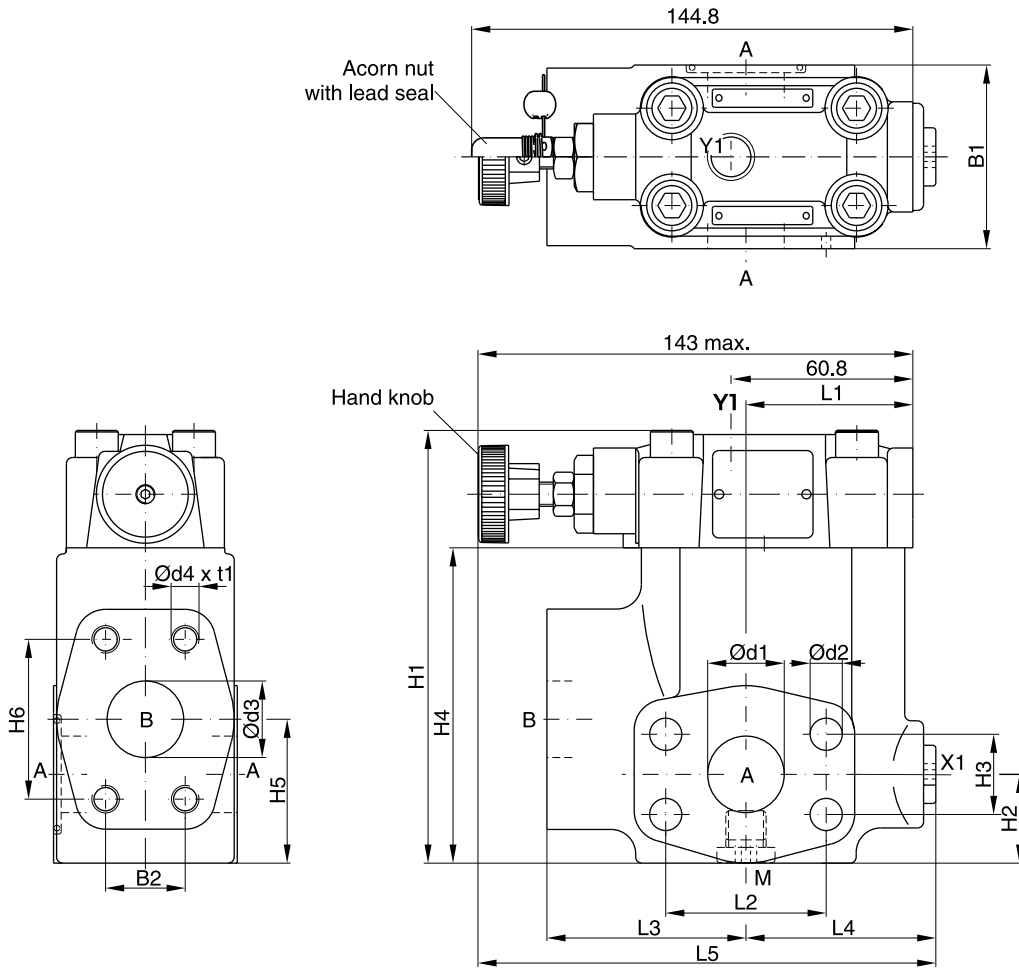
Characteristic Curves

Typical pressure characteristics at closing point



Time and pressure underlap depend on the characteristics of the specific system.

Dimensions



9

SAE61

Seal kits		
NG	NBR	FPM
06	S16-91850-0	S16-91850-5
08	S16-91851-0	S16-91851-5
10	S16-91852-0	S16-91852-5

NG	B1	B2	H1	H2	H3	H4	H5	H6	L1	L2	L3	L4	L5	d1	d2	d3	d4 (option 152)	t1
06	60	22.2	119	29.5	22.2	81	41	47.6	50.3	47.6	63	60	152	19	10.5	19	3/8"-16 UNC (M10)	20
08	60	26.2	141	30.5	26.2	103	47	52.4	55.8	52.4	65	62	149	25	10.5	25	3/8"-16 UNC (M10)	23
10	75	30.2	151	37.5	30.2	113	65	58.7	57.8	58.7	61	68	150.5	32	12.5	30	7/16"-14 UNC (M12)	22

Port	Function	Port size		
		R5S06	R5S08	R5S10
A (2)	Pressure	3/4" SAE61	1" SAE61	1 1/4" SAE61
B	Secondary port	3/4" SAE61	1" SAE61	1 1/4" SAE61
X1	External pilot port ¹⁾	G 1/4"	G 1/4"	G 1/4"
Y1	External drain	G 1/4"	G 1/4"	G 1/4"
M	Pressure gauge	G 1/4"	G 1/4"	G 1/4"

¹⁾ Closed when supplied.

