

Parker Series RE06MW Direct Operated Proportional Pressure Relief Valve Service Manual

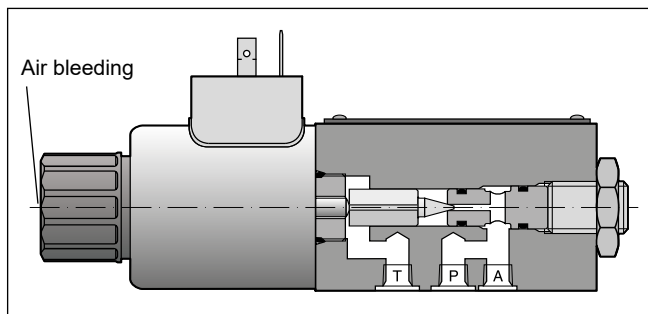
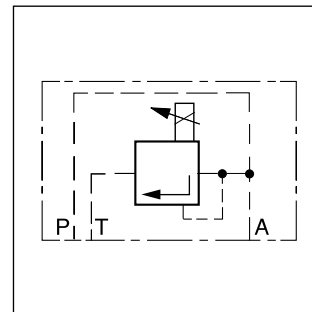
Pressure relief valves of the series RE06M*W are direct operated proportional valves typically used as remote control valves for flow rates below 3 l/min.

Function

When the pressure in port P or A exceeds the pressure setting at the solenoid, the cone opens to port T and limits the pressure in port P to the adjusted level.

The optimum performance can be achieved in combination with the digital amplifier module PCD00A-400.

Also available as sandwich valve, see Chapter 8, Pilot valves series RPDM.

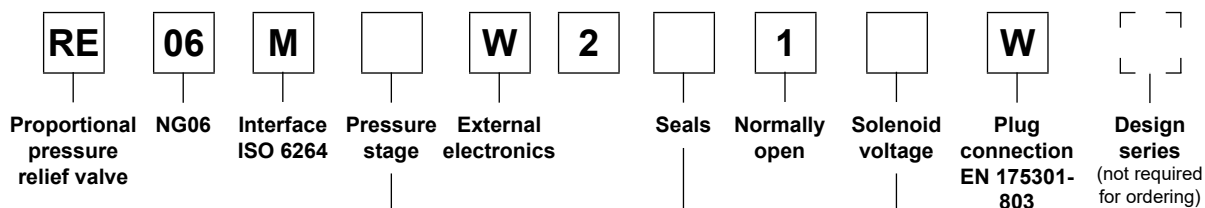


4

Features

- Direct operated with proportional solenoid
- Very low pressure adjustment of p_{min}
- 2 pressure ports, A and P
- Subplate mounting according to ISO 6264
- 4 pressure stages

Ordering Code



Code	Pressure stage
10	up to 105 bar
17	up to 175 bar
25	up to 250 bar
35	up to 350 bar

Code	Solenoid voltage
K	12 V, 2.5 A
X	16 V, 1.3 A

Code	Seals
N	NBR
V	FPM

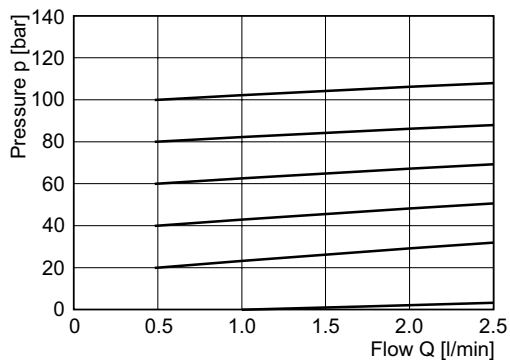
Technical Data

General		
Nominal size		DIN NG06 / CETOP 03 / NFPA D03
Interface		Subplate mounting according to ISO 6264
Mounting position		Unrestricted, horizontal mounting preferred
Ambient temperature	[°C]	-20 ... +60
MTTF _D value	[years]	150
Weight	[kg]	1.8
Hydraulic		
Max. operating pressure	[bar]	Ports P and A up to 350; port T 30
Pressure stages	[bar]	105, 175, 250, 350
Nominal flow	[l/min]	See p/Q curves
Fluid		Hydraulic oil according to DIN 51524
Viscosity, permitted	[cSt] / [mm²/s]	20 ... 400
recommended	[cSt] / [mm²/s]	30 ... 80
Fluid temperature	[°C]	-20...+70 (NBR: -25...+70)
Filtration		ISO 4406; 18/16/13
Linearity	[%]	±2.8
Repeatability	[%]	<±1
Hysteresis	[%]	±1.5 of p _{max}
Electrical		
Duty ratio	[%]	100 ED
Protection class		IP65 in accordance with EN 60529 (with correctly mounted plug-in connector)
Nominal voltage	[V]	12 (2.5 A max. current), 16 (1.3 A max. current)
Coil resistance at 20 °C	[Ohm]	4.28 (at 12 V), 12 (at 16 V)
Solenoid connection		Connector as per EN 175301-803
Power amplifier, recommended		PCD00A-400

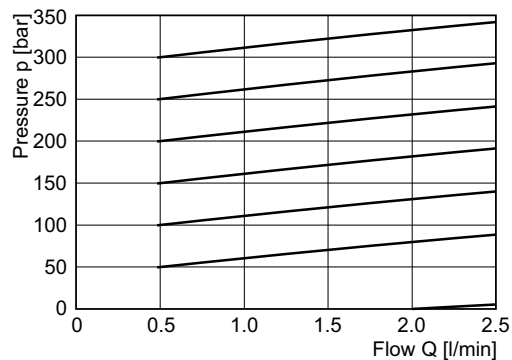
Characteristic Curves

p/Q curves

Pressure stage 105 bar

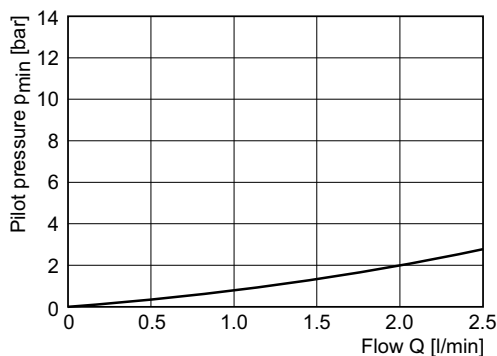


Pressure stage 350 bar

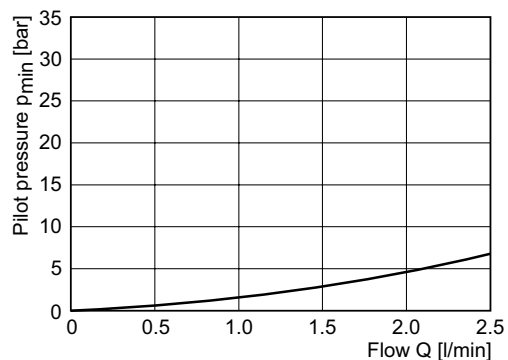


Min. adjusted pressure

Pressure stage 105 bar

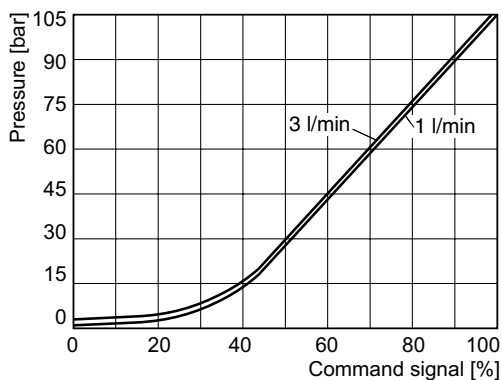


Pressure stage 350 bar

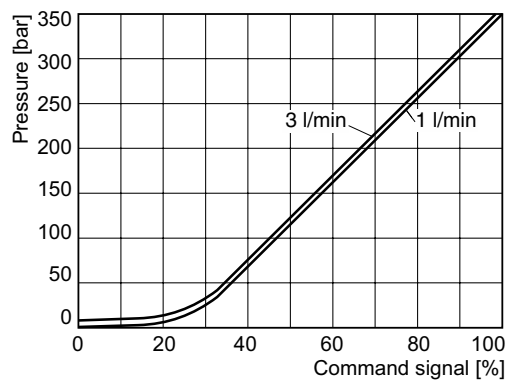


Pressure/signal curve

Pressure stage 105 bar



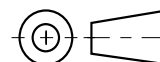
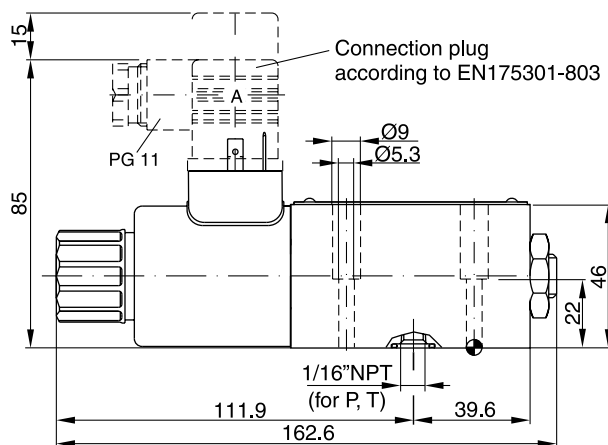
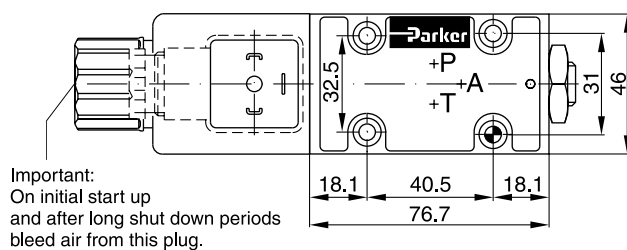
Pressure stage 350 bar

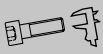
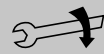
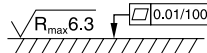


All characteristic curves measured with HLP46 at 50 °C.

RE06MW UK.indd 29.11.22

RE06M*W



Surface finish	Bolt kit			NBR	Kit FPM
	BK375	4x M5x30 ISO 4762-12.9	7.6 Nm ±15 %	SK-RE06MWN	SK-RE06MWV

Mounting pattern ISO 6264-03-04-*-97

