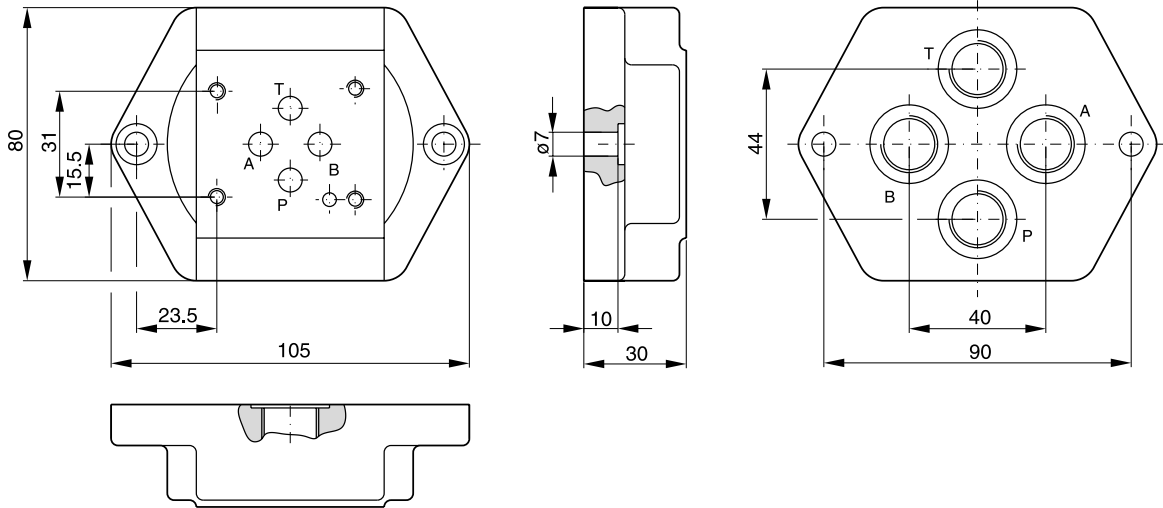


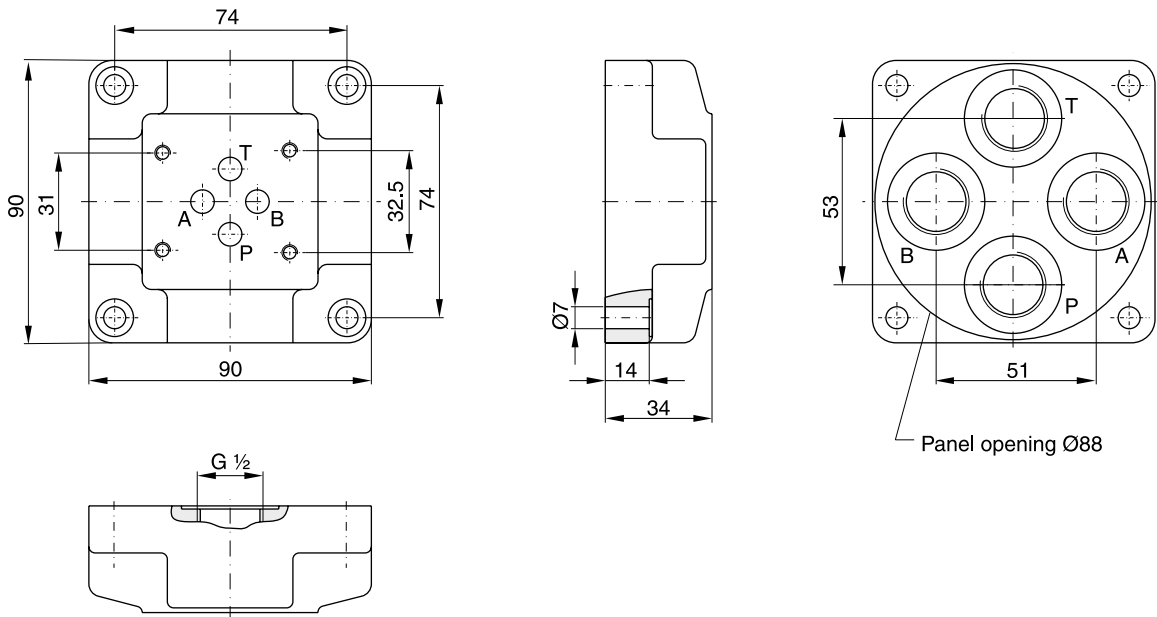
Parker Series SPD Subplates for Directional Control Valves Service Manual

Valve size DIN NG06, CETOP 03, NFPA D03



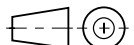
Ordering code	
SPD 22 B 910	P, A, B and T = G ¼
SPD 23 B 910	P, A, B and T = G ⅜

Valve size DIN NG06, CETOP 03, NFPA D03

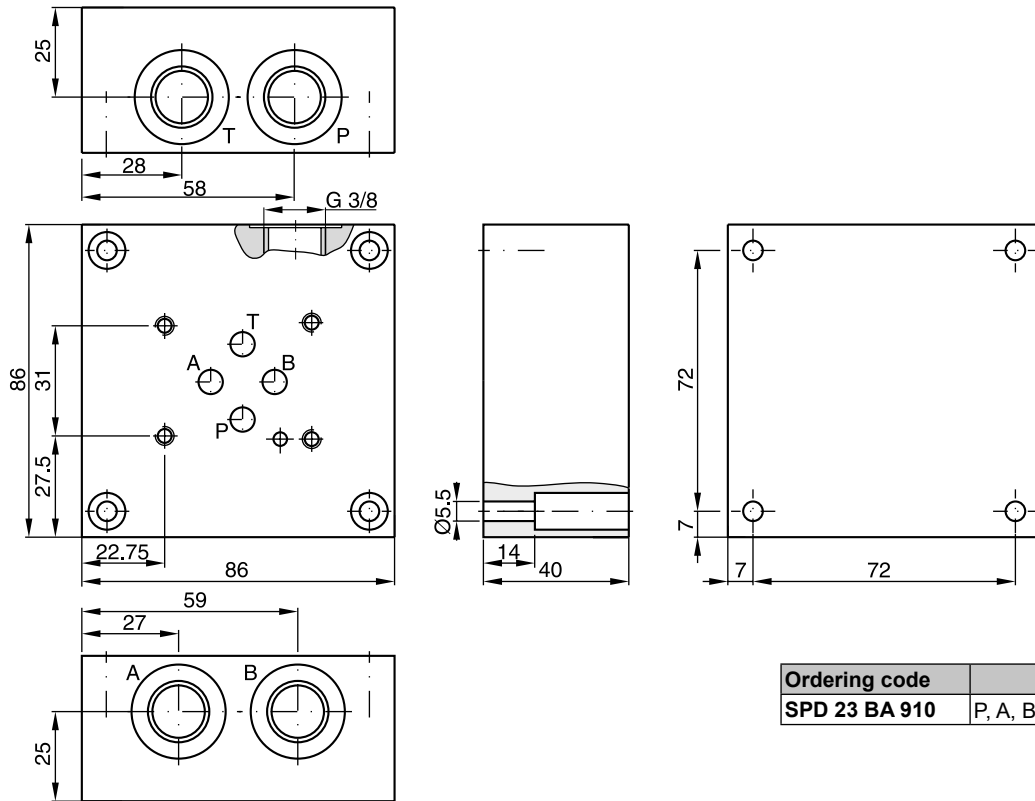


Ordering code	
SPD 24 B 910	P, A, B and T = G ½

Bold letters =
Short-term availability

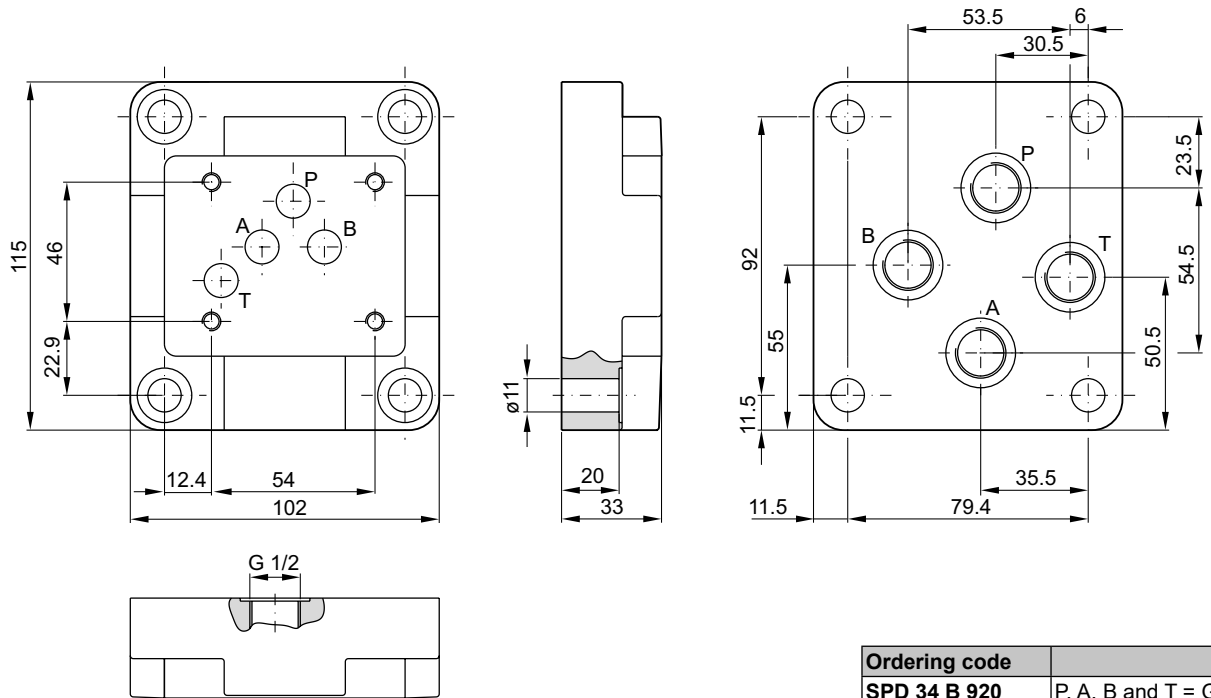


Valve size DIN NG06, CETOP 03, NFPA D03



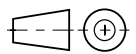
Ordering code	
SPD 23 BA 910	P, A, B and T = G $\frac{3}{8}$

Valve size DIN NG10, CETOP 05, NFPA D05



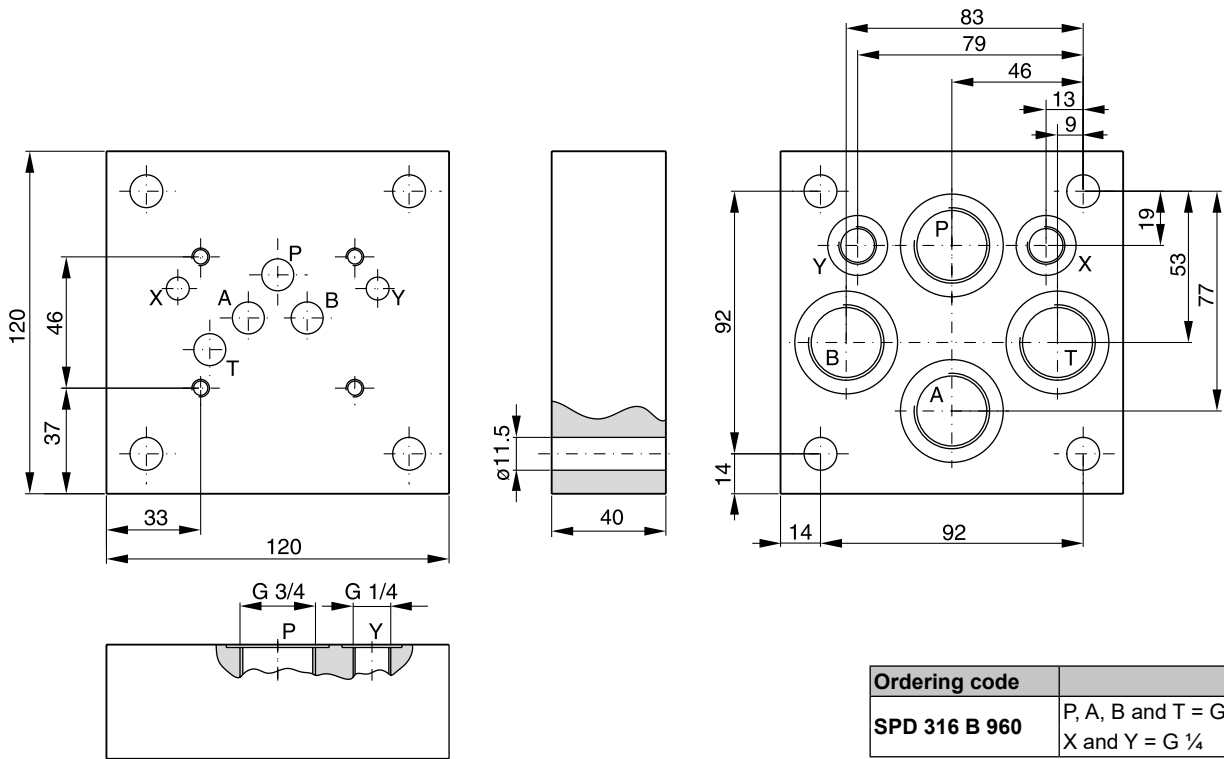
Ordering code	
SPD 34 B 920	P, A, B and T = G $\frac{1}{2}$

Bold letters =
Short-term availability

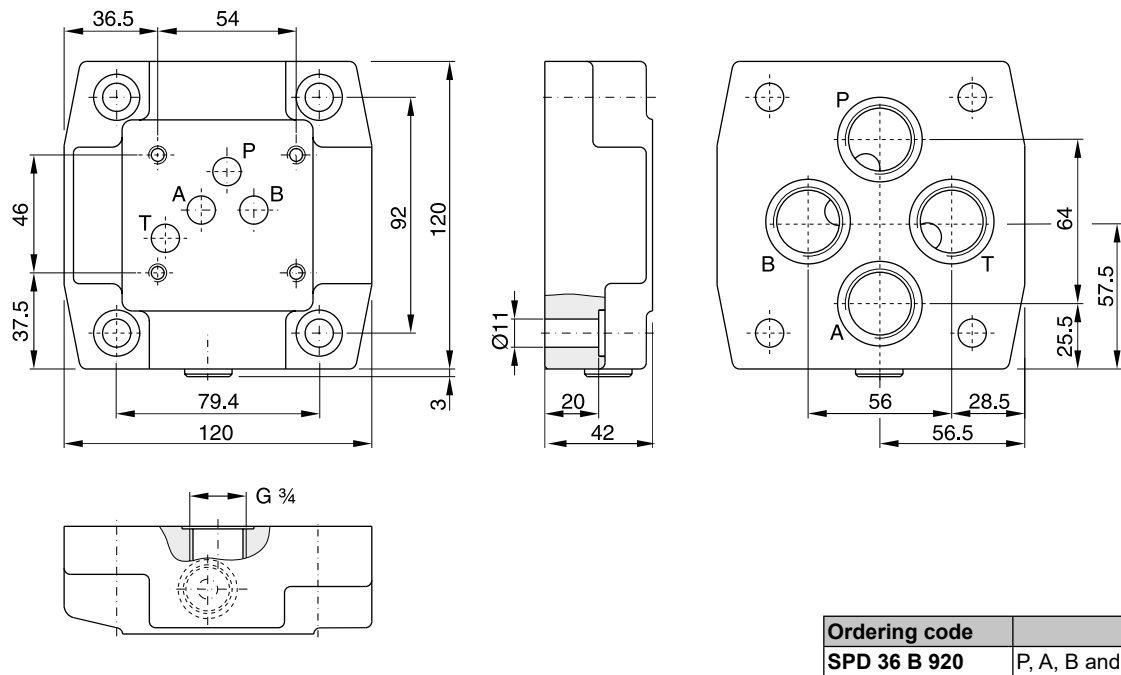


Characteristics

Valve size DIN NG10, CETOP 05, NFPA D05



Valve size DIN NG10, CETOP 05, NFPA D05

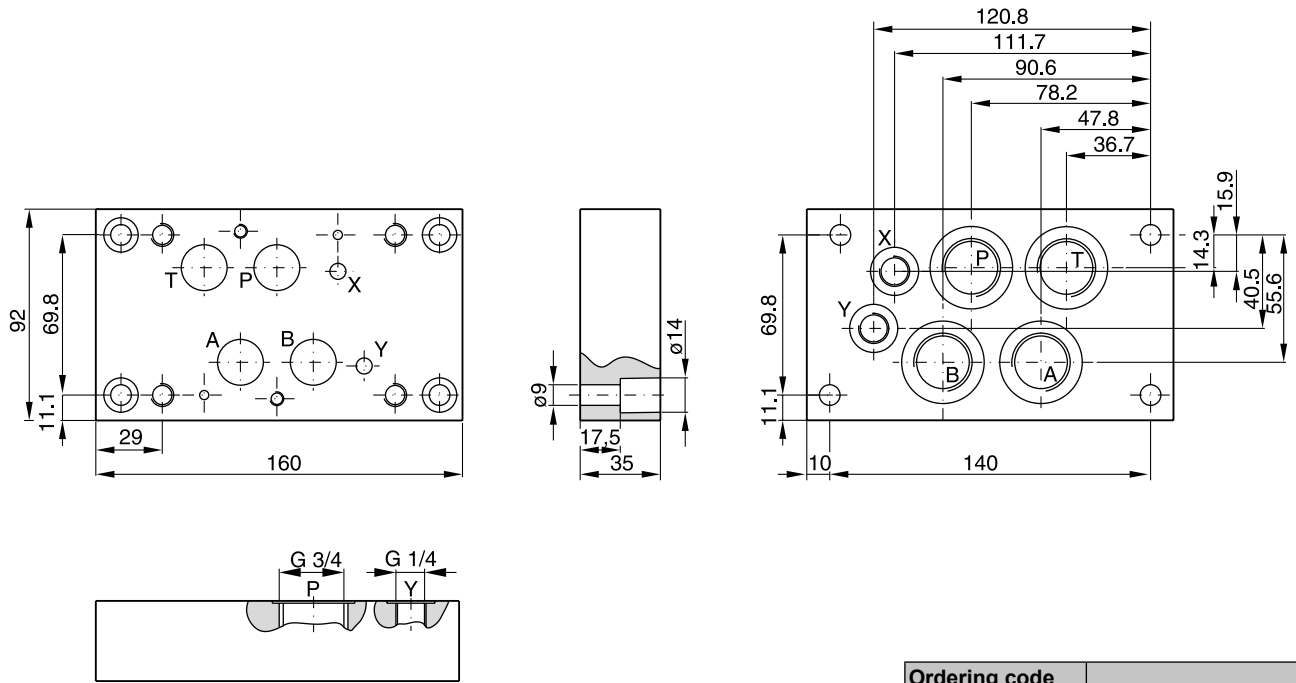


Bold letters =
Short-term availability



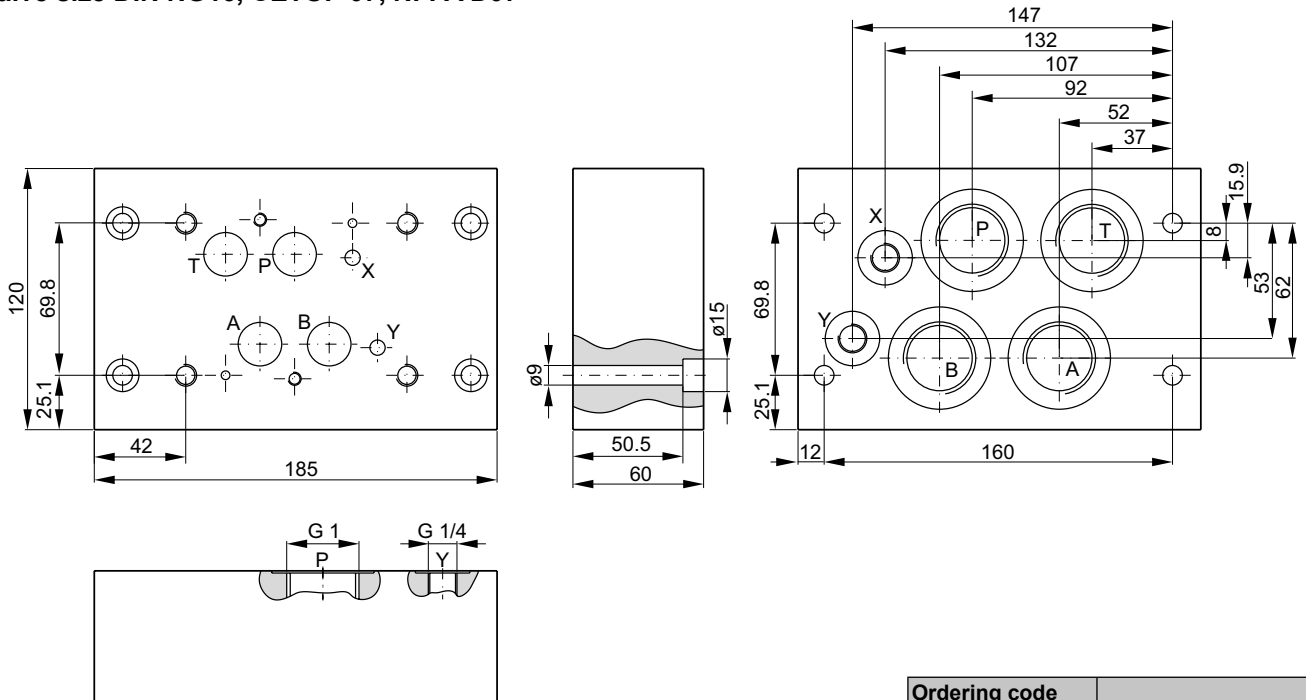
12

Valve size DIN NG16, CETOP 07, NFPA D07



Ordering code	
SPD 46 B 910	P, A, B and T = G 3/4 X and Y = G 1/4

Valve size DIN NG16, CETOP 07, NFPA D07



Ordering code	
SPD 48 B 910	P, A, B and T = G 1 X and Y = G 1/4

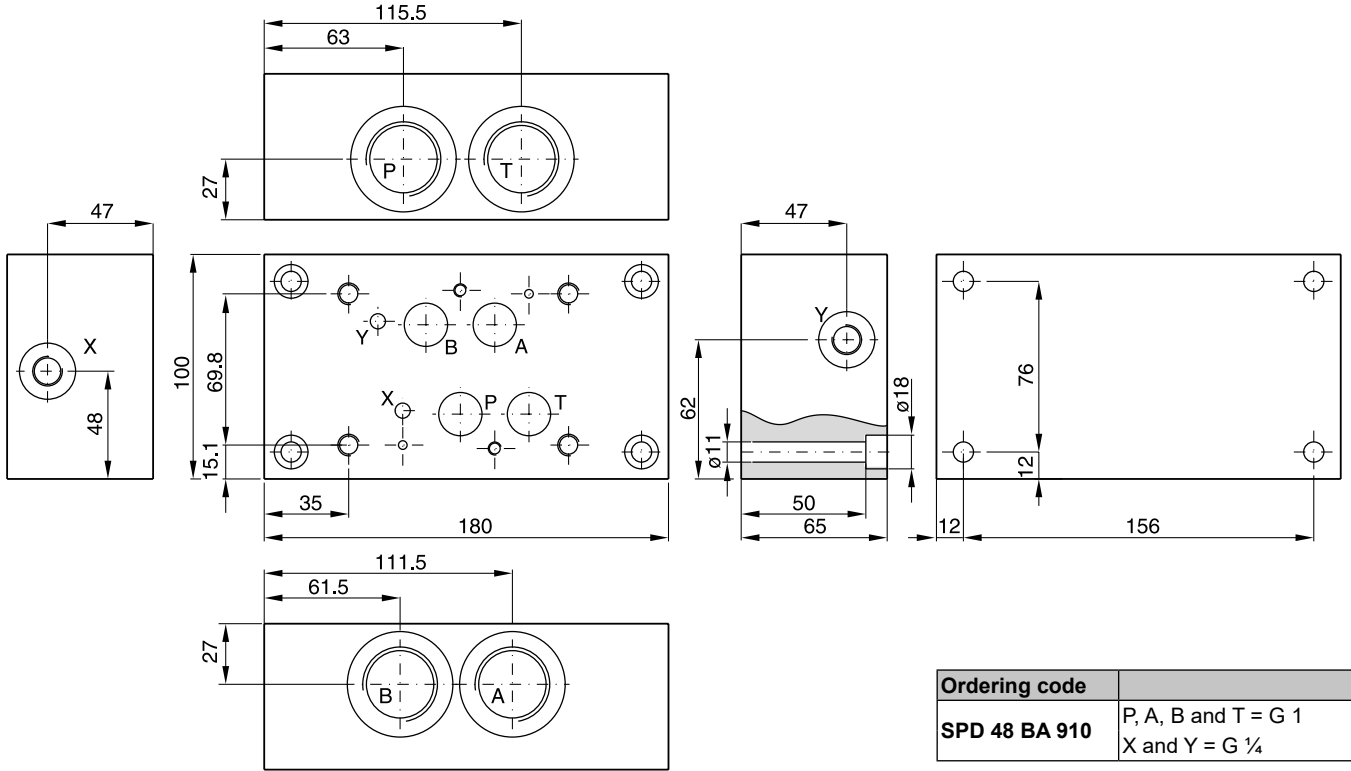
Bold letters =
Short-term availability



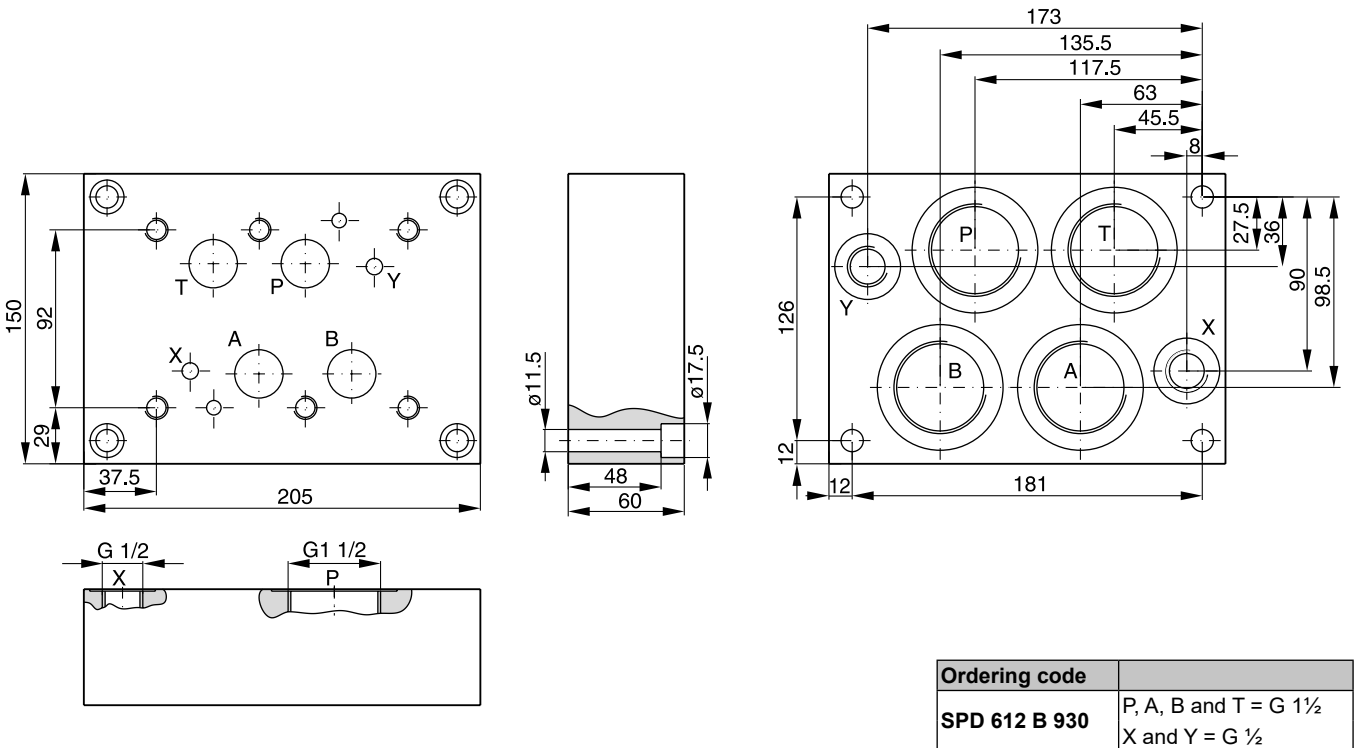
12

Characteristics

Valve size DIN NG16, CETOP 07, NFPA D07



Valve size DIN NG25, CETOP 08, NFPA D08



Bold letters =
Short-term availability

