

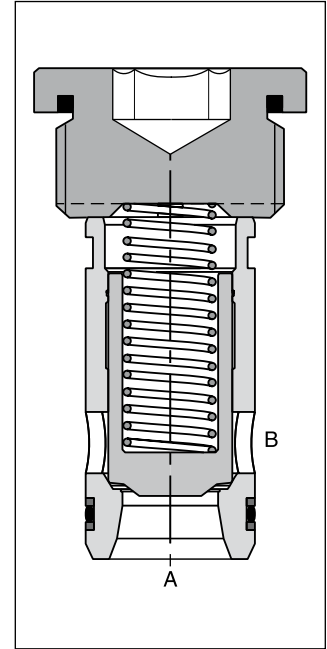
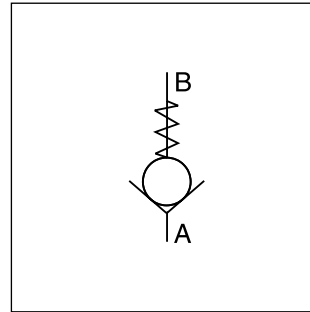
Parker Series SPZBE Check Valve Service Manual

The check valves series SPZBE are slip-in cartridge valves. The function unit is fixed inside the manifold by a hexagonal plug with slot.

The design is based on CE series with same poppet and sleeve. The different mounting cavity has to be considered.

Features

- Little space required
- Leak-free from port B to A
- 4 different opening pressures



Ordering code

	-	SP	Z	BE	1010	E		
Seal		Check valve	Flow direction A to B	Design series, screwed cover	Factory norm, poppet, direct operated	Slip-in valve	Valve size	Opening pressure

Code	Seal
omit	NBR
V	FPM

Code	Size
16	NG16
25	NG25
32	NG32
40	NG40
50	NG50

Code	Pressure [bar]
L	0.1
N	0.5
S	1.6
U	4.0

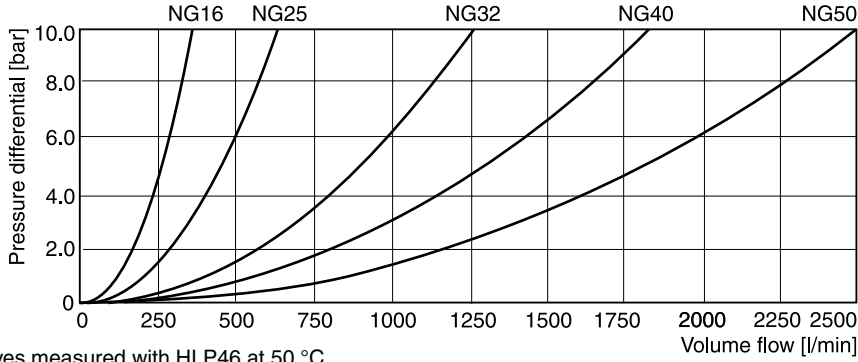
Bold letters = Short-term availability

6

Technical data

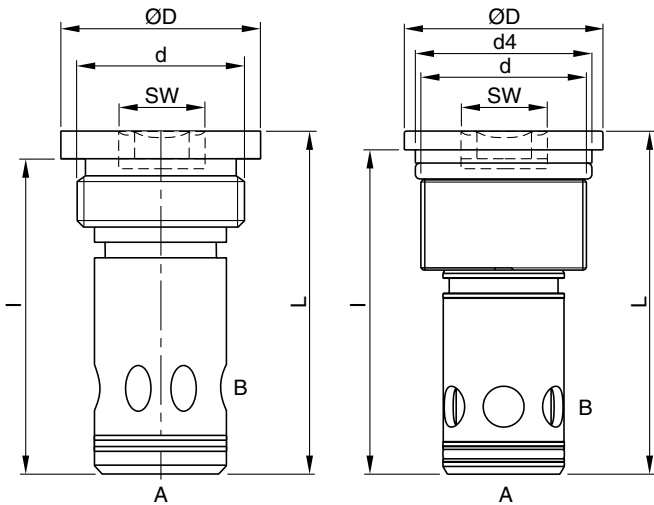
General					
Design	Threaded cartridge valve				
Mounting position	Unrestricted				
Ambient temperature [°C]	-20 ... +60				
MTTF _D value [years]	150				
Nominal size	NG16	NG25	NG32	NG40	NG50
Weight [kg]	0.25	0.5	1.2	3.1	5.2
Hydraulic					
Flow direction	Port A to B				
Fluid	Hydraulic oil according to DIN 51524				
Fluid temperature [°C]	-20...+70 (NBR: -25...+70)				
Viscosity, permitted [cSt]/[mm ² /s]	20 ... 400				
	recommended [cSt]/[mm ² /s]	30 ... 80			
Filtration	ISO 4406 (1999); 18/16/13				
Nominal pressure [bar]	350				
Opening pressure [bar]	0.1; 0.5; 1.6 and 4.0				
Flow at Δp= 5 bar [l/min]	250	450	900	1350	1800

Δp/Q performance curves

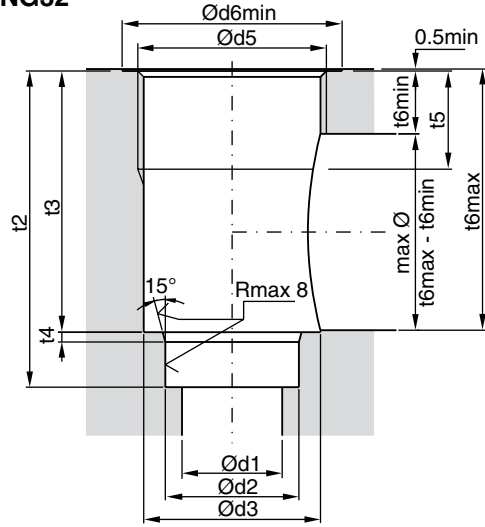


All characteristic curves measured with HLP46 at 50 °C.

**Dimensions
 NG16-NG32**

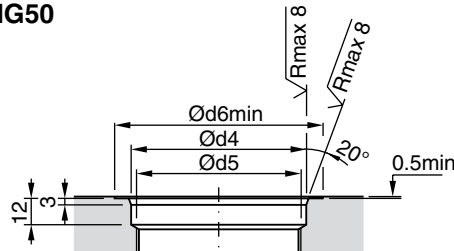


**Mounting cavity
 NG16-NG32**



Dimensions	NG16	NG25	NG32	NG40	NG50
D	40	55	72	90	105
L	72.5	89	109.5	155.5	182
d	M33x2	G1½"	G2"	M75x2	M90x2
d4	-	-	-	80	95
l	66	80.5	99.5	147	173.5
SW	17	24	32	32	32
Tightening torque ¹⁾ [Nm] ± 15 %	225	300	550	750	950

NG40-NG50



Seal kits

NG	NBR seals	FPM seals
16	SK-SPZBE10E16	SK-SPZBE10E16V
25	SK-SPZBE10E25	SK-SPZBE10E25V
32	SK-SPZBE10E32	SK-SPZBE10E32V
40	SK-SPZBE10E40	SK-SPZBE10E40V
50	SK-SPZBE10E50	SK-SPZBE10E50V

Springs

Spring Type	Ordering Number				
	NG16	NG25	NG32	NG40	NG50
L 0.1 bar	45051368	45051375	45051376	45051382	45051384
N 0.5 bar	45051369	45051374	45051377	45051381	45051385
S 1.6 bar	45051370	45051372	45051378	45051380	45051386
U 4.0 bar	45051371	45051373	45051379	45051383	45051387

Size	NG16	NG25	NG32	NG40	NG50
d1	18	25.5	36	43	56
d2 ^{H7}	25	34	45	55	68
d3	31	45	57	73	88
d4	-	-	-	80 H7	95 H7
d5	M33x2	G1½"	G2"	M75x2	M90x2
d6 _{min}	41	56	73	95	110
t2 ^{+0.1}	66	80.5	99.5	147	173.5
t3	53	66.5	84.5	129	151.5
t4	2	2.5	2.5	3	3
t5	21	25	30	60	70
t6 _{min}	16	16	24	55	65
t6 _{max}	52.5	66	84	128.5	151

¹⁾ Please note the material specification for tightening torque in chapter 12, "accessories".