

Parker Series VM Direct Operated Pressure Reducing Valve Service Manual

Direct operated pressure reducing valve with manual adjustment. Series VM is a direct operated, spring loaded 3-way pressure reducing valve, that is open in neutral position. The valve closes the connection when the pre-set pressure is exceeded.

Primary port: NG06 - P, NG10 - B

Secondary port: NG06 - A, NG10 - A

Tank port: NG06 - T, NG10 - Y

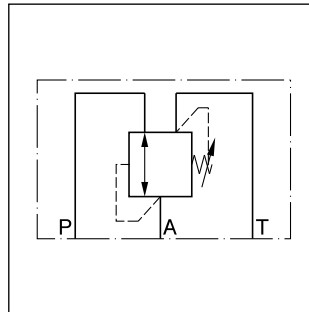
If the pressure increases due to an external influence the spool opens to port T until the pre-set pressure is reached.



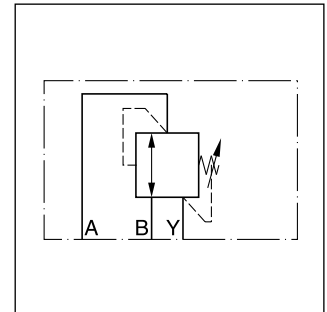
NG06



NG10



NG06



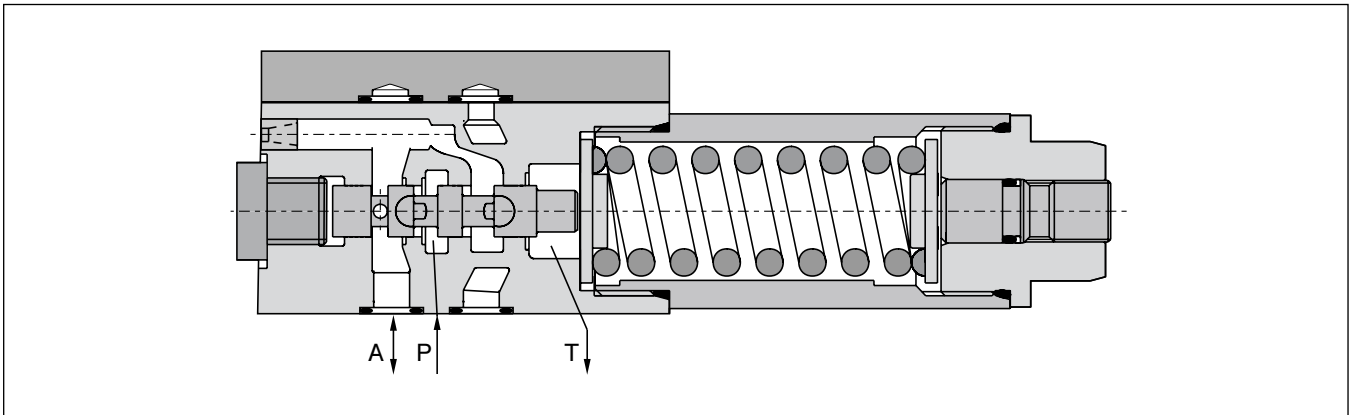
NG10

4

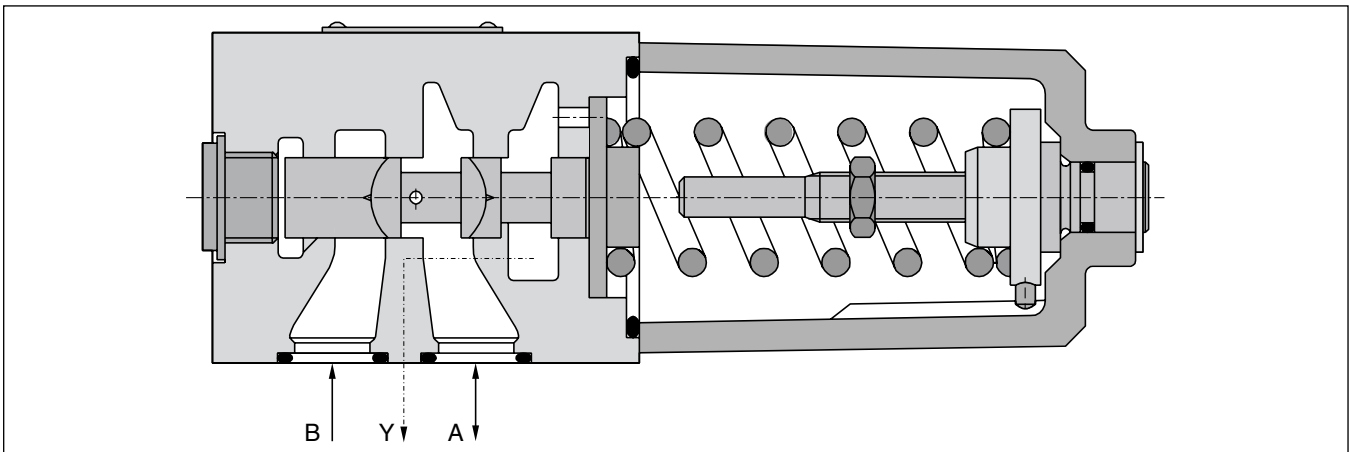
Features

- Spool type valve
- Subplate mounting acc. to ISO 5781
- 5 pressure stages at NG06
- 3 pressure stages at NG10
- 2 adjustment modes

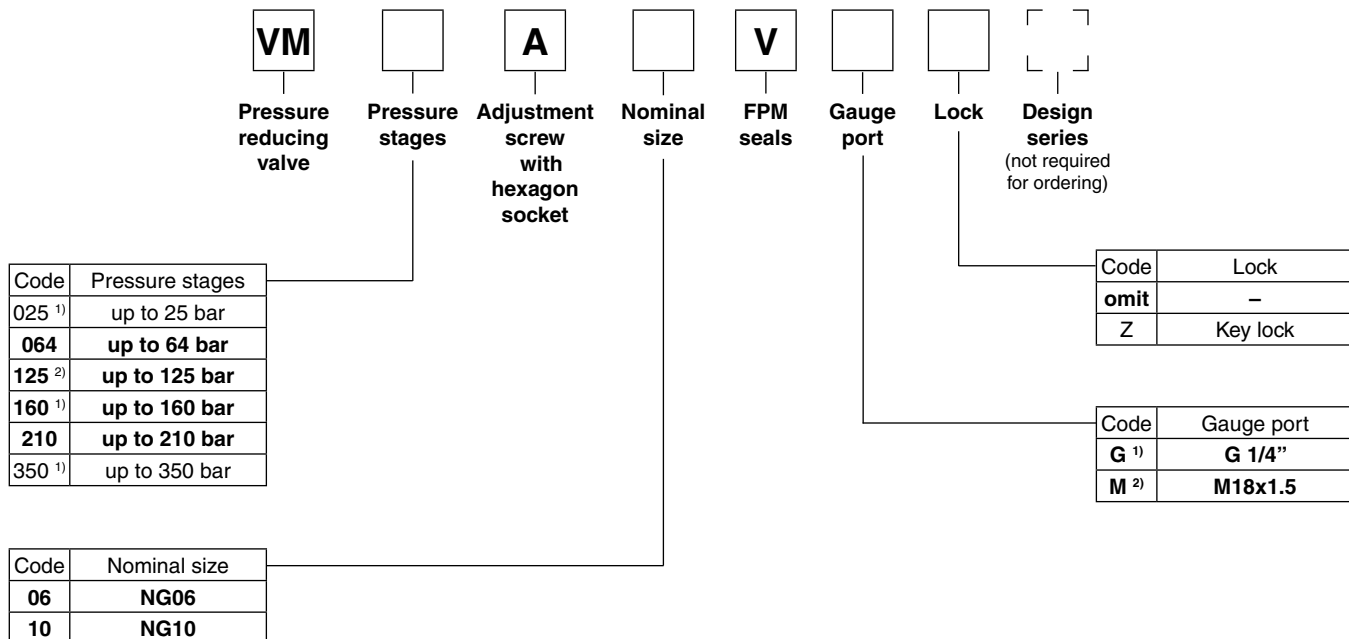
NG06



NG10



Ordering code



**Bold letters =
Short-term availability**

¹⁾ Only NG06.

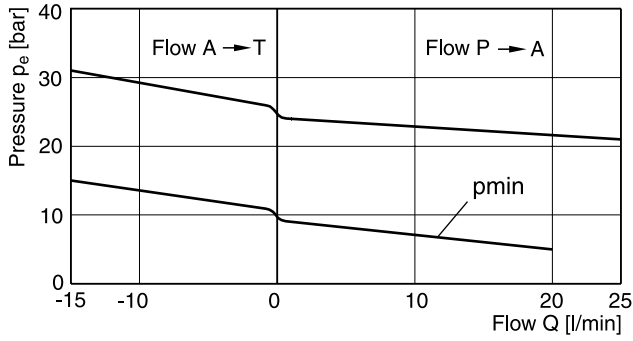
²⁾ Only NG10.

Technical data

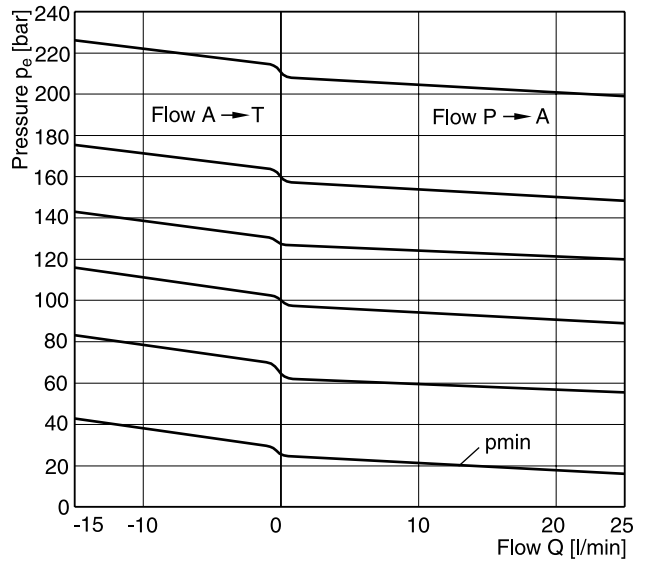
General			
Design	Pressure reducing valve, direct operated, spool type		
Nominal size	NG06 (CETOP 03 / NFPA D03)	NG10 (CETOP 05 / NFPA D05)	
Interface	Subplate mounting according to ISO 5781		
Mounting position	unrestricted		
Ambient temperature	[°C]	-20...+60	
MTTF _D value	[years]	150	
Weight	[kg]	1.3	3.7
Hydraulics			
Max. operating pressure	[bar]	Port P and A 350 Port T depressurized	Port A and B 350 Port Y depressurized
Pressure stages	[bar]	25; 64; 160; 210; 350	64; 125; 210
Nominal flow	[l/min]	25	60
Fluid	Hydraulic oil according to DIN 51524		
Fluid temperature	[°C]	-20...+70	
Viscosity permitted	[cSt]/ [mm ² /s]	20...400	
Viscosity recommended	[cSt]/ [mm ² /s]	30...80	
Filtration	ISO 4406 (1999); 18/16/13		

Characteristic Curves

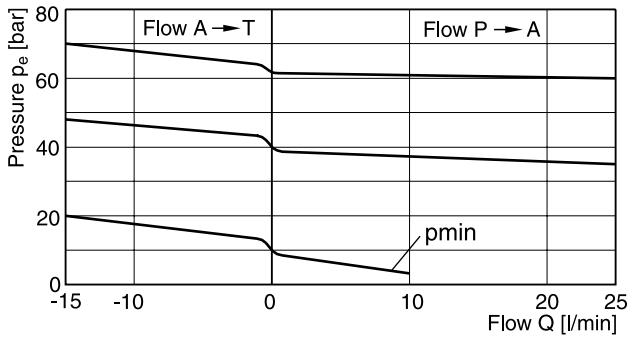
NG06 setting pressure max. 25 bar



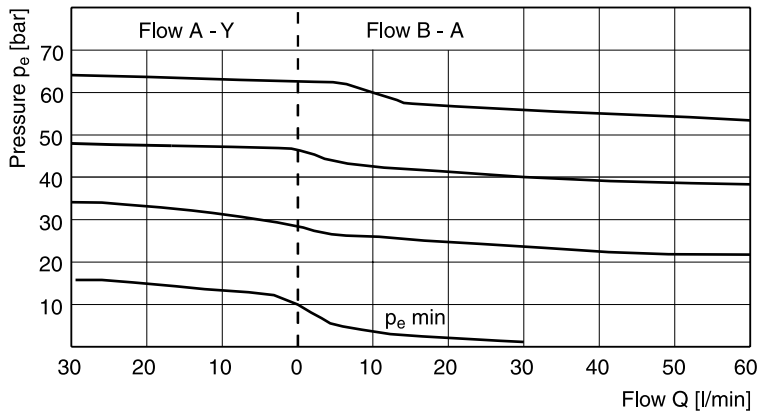
NG06 setting pressure max. 160 or 210 bar



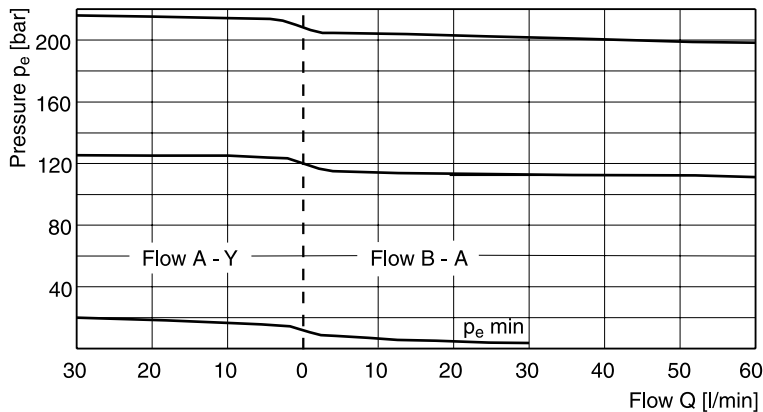
NG06 setting pressure max. 64 bar



NG10 setting pressure max. 64 bar

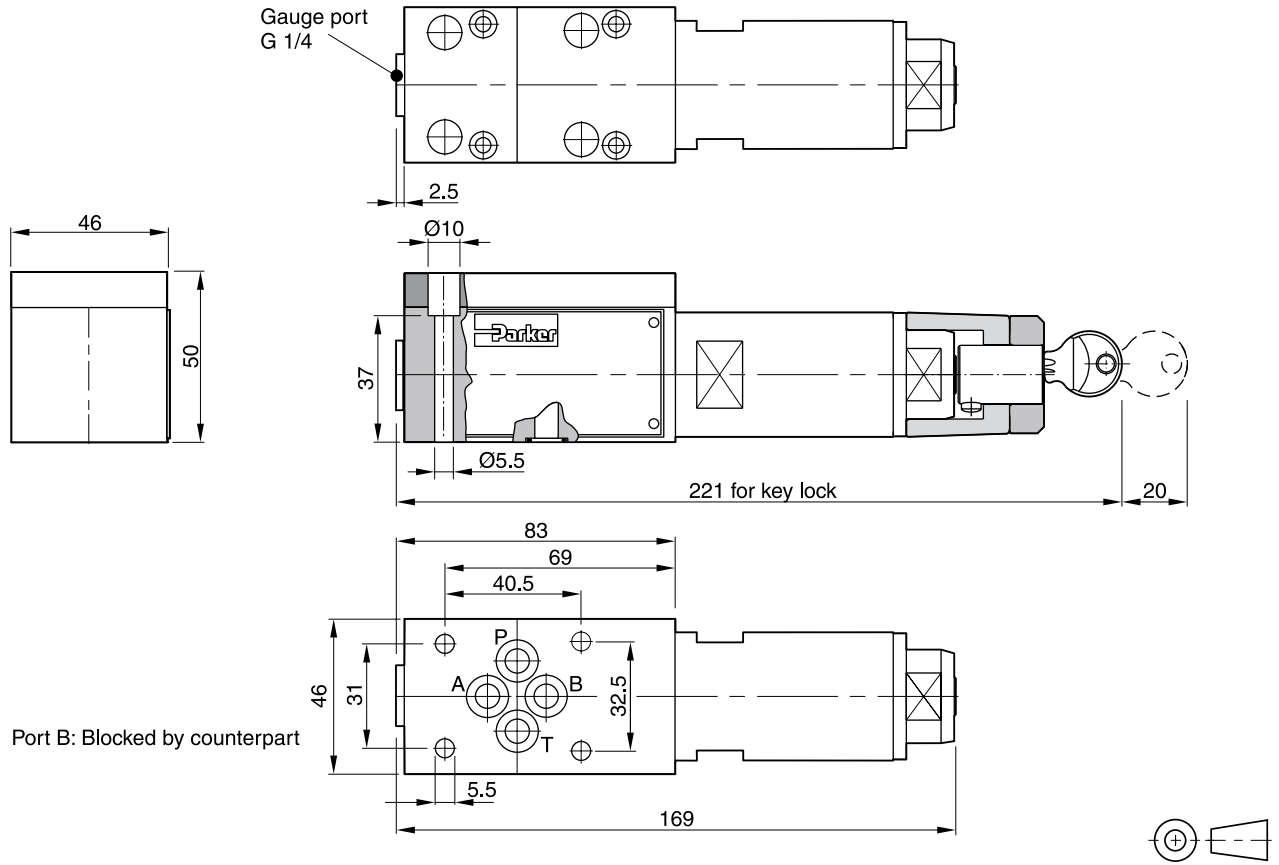


NG10 setting pressure max. 210 bar

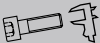


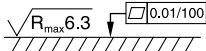


All characteristic curves measured with HLP46 at 50 °C.

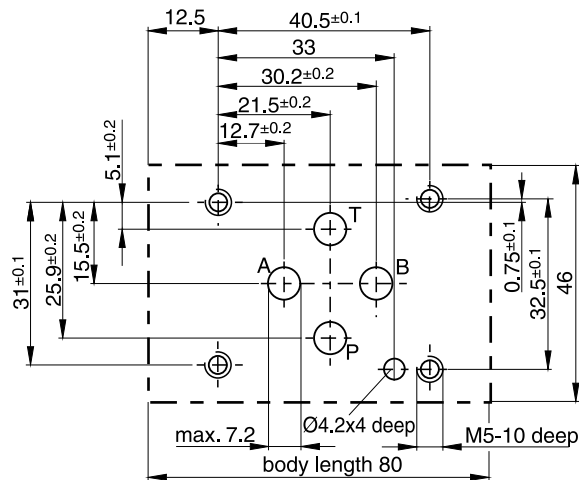
NG06



4

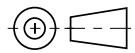
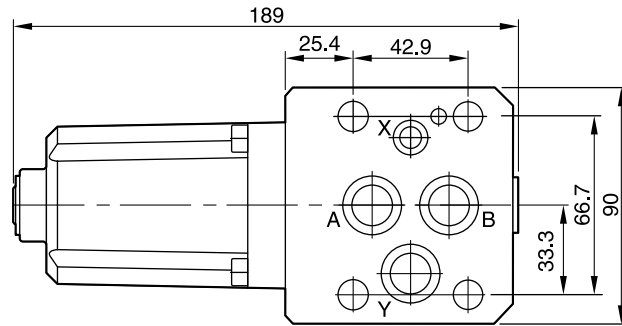
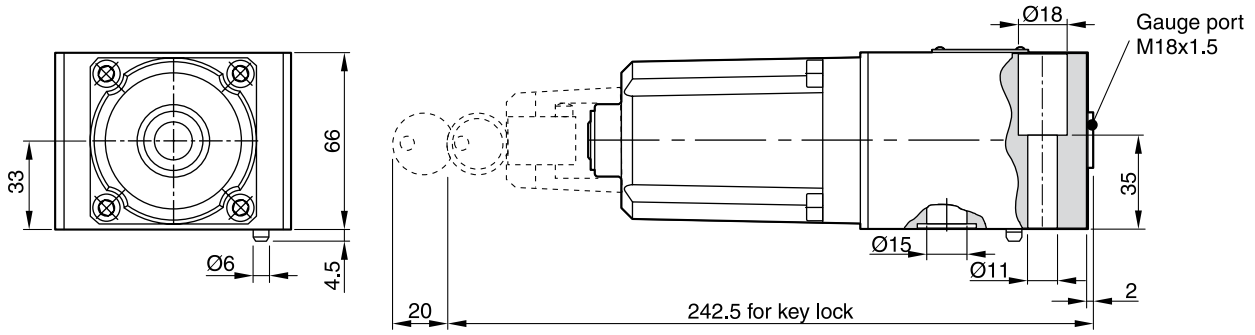
Surface finish	Bolt kit			 Kit FPM
	BK443	4x M5x45 ISO 4762-12.9	7.6 Nm ±15 %	SK-VB/VM/VS-A06V




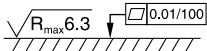
Mounting pattern ISO 5781-03-04-0-00



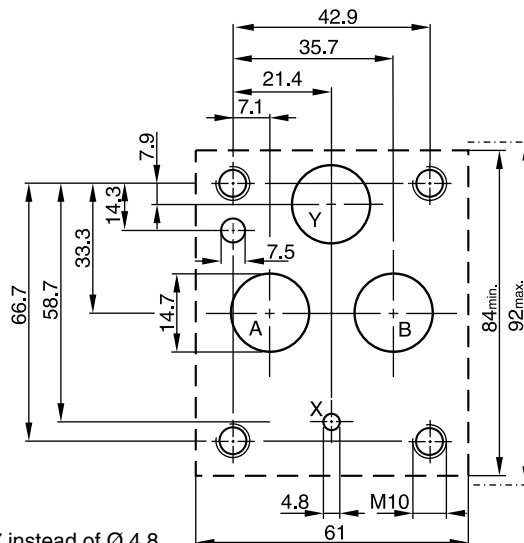
Dimensions

NG10



Surface finish	Bolt kit			 Kit FPM
	BK389	4x M10x50 ISO 4762-12.9	63 Nm ±15 %	SK-VB/VM-A10V

Mounting pattern ISO 5781-06-07-0-00 ¹⁾



¹⁾ Deviating from ISO the Y port has $\varnothing 14.7$ instead of $\varnothing 4.8$.