

Parker Series ZRD Throttle Check Valve Service Manual

General Description

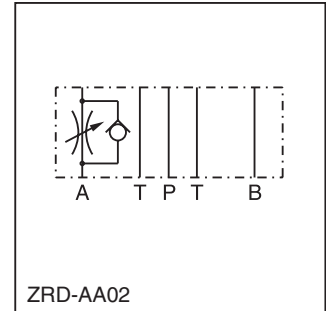
Series ZRD throttle check valves are designed for maximum flow rates.

The throttle check function can be located in port A or B as well as in A + B. Meter-in or meter-out functionality can be selected by model code.

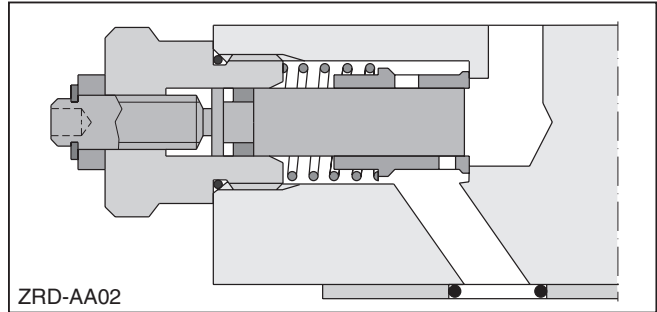
A low flow / high resolution version in NFPA 03 / NG6 for sensitive shifting time adjustment of pilot operated directional control valves is available on request.



ZRD-ABZ01



ZRD-AA02



ZRD-AA02

Features

- High flow capacity.
- Various functional arrangements.
- Sizes:
 - ZRD01 – NFPA D03 / NG6 / CETOP 3
 - ZRD02 – NFPA D05 / NG10 / CETOP 5

Specifications

General		
Size	NG6	NG10
Mounting	DIN 24340 A6 ISO 4401 NFPA D03 CETOP RP 121	DIN 24340 A10 ISO 4401 NFPA D05 CETOP RP 121 5
Mounting Position	Unrestricted	
Ambient Temperature	-20°C to +50°C (-4°F to +122°F)	
Hydraulic		
Max. Operating Pressure	350 Bar (5075 PSI)	
Nominal Flow	80 LPM (21.2 GPM)	160 LPM (42.3 GPM)
Leakage	—	—
Cracking Pressure	—	—
Fluid	Hydraulic oil as per DIN 51524 ... 51525	
Fluid Temperature	-20°C to +80°C (-4°F to +176°F)	
Viscosity	10 to 650 cSt / mm ² /s (46 to 3013 SSU)	
Permitted Recommended	30 cSt / mm ² /s (139 SSU)	
Filtration	ISO 4406 (1999) 18/16/13 (acc. NAS 1638: 7)	

WARNING: This product can expose you to chemicals including Lead, Nickel (Metallic), or 1,3-Butadiene which are known to the State of California to cause cancer, and Lead or 1,3-Butadiene which is known to the State of California to cause birth defects and other reproductive harm. For more information go to www.P65Warnings.ca.gov.

ZRD
 Throttle Valve
 with Check

Meter Option

Size

S0
 Hexagon
 Screw with
 Lock Nut

D
 Design
 Series

Seal

Code	Description
AA	Meter-out Control in A
AZ	Meter-in Control in A
BA	Meter-out Control in B
BZ	Meter-in Control in B
ABA	Meter-out Control in A and B
ABZ	Meter-in Control in A and B

Code	Description
01	NFPA D03 / NG6
02	NFPA D05 / NG10

Code	Description
1	Nitrile
5	Fluorocarbon

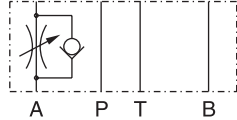


Weight: 1 Cartridge
 ZRD*01 1.2 kg (2.6 lbs)
 ZRD*02 2.8 kg (6.2 lbs.)

2 Cartridges
 1.3 kg (2.9 lbs)
 2.9 kg (6.4 lbs.)

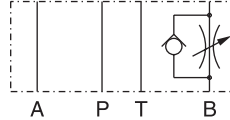
ZRD01

Meter-in control in A



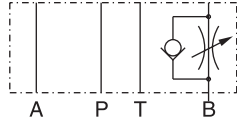
Series
 ZRDAZ01S0D1

Meter-out control in B



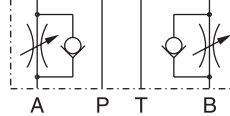
Series
 ZRDBA01S0D1

Meter-in control in B



Series
 ZRDBZ01S0D1

Meter-in control in A and B



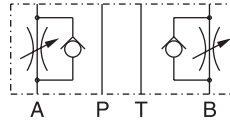
Series
 ZRDABZ01S0D1

Meter-out control in A



Series
 ZRDAA01S0D1

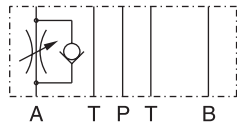
Meter-out control in A and B



Series
 ZRDABA01S0D1

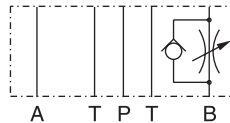
ZRD02

Meter-in control in A



Series
 ZRDAZ02S0D1

Meter-out control in B



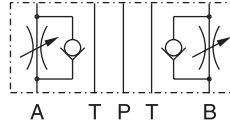
Series
 ZRDBA02S0D1

Meter-in control in B



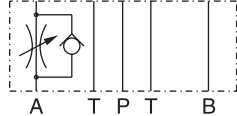
Series
 ZRDBZ02S0D1

Meter-in control in A and B



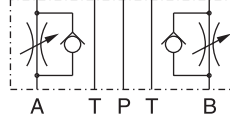
Series
 ZRDABZ02S0D1

Meter-out control in A



Series
 ZRDAA02S0D1

Meter-out control in A and B

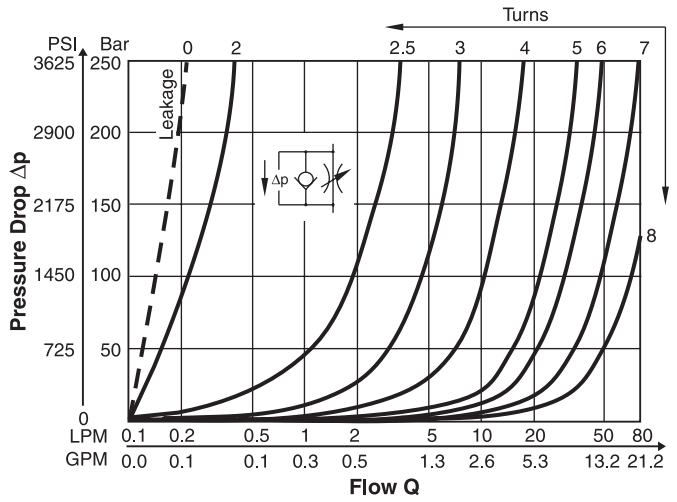
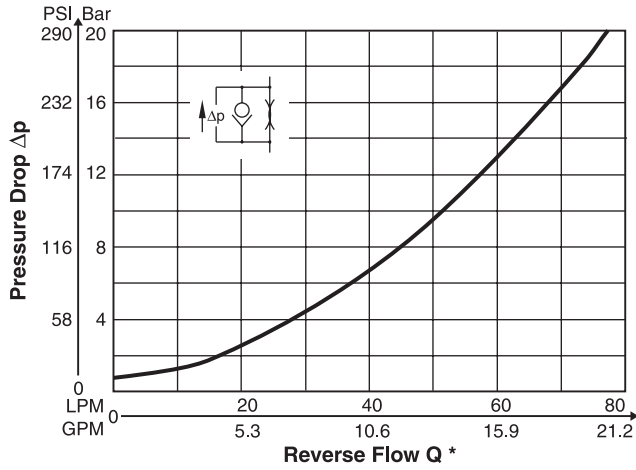


Series
 ZRDABA02S0D1

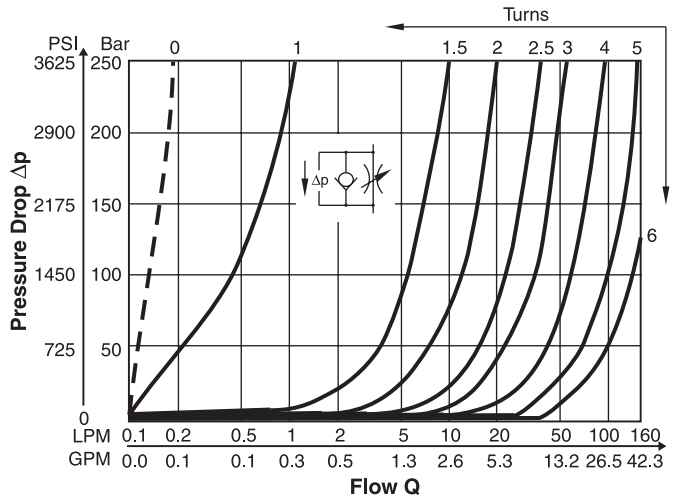
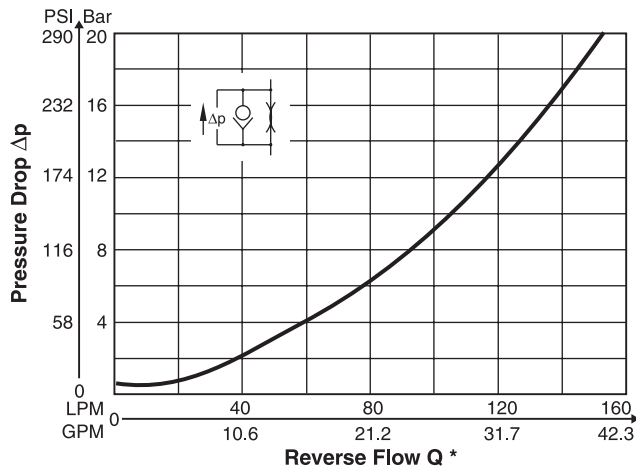


p/Q Performance Curves

ZRD01



ZRD02

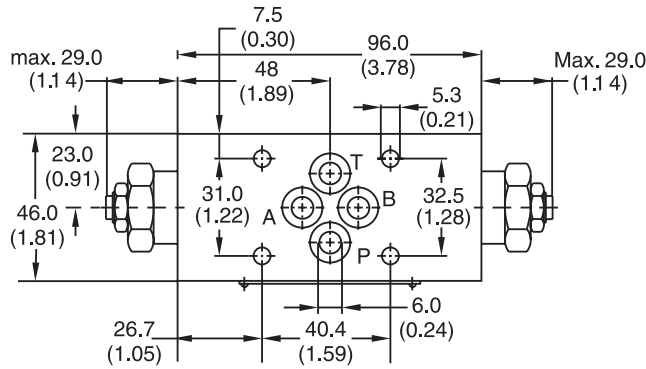


* Throttle closed

Fluid Viscosity 30 cSt @ 50°C (122°F)

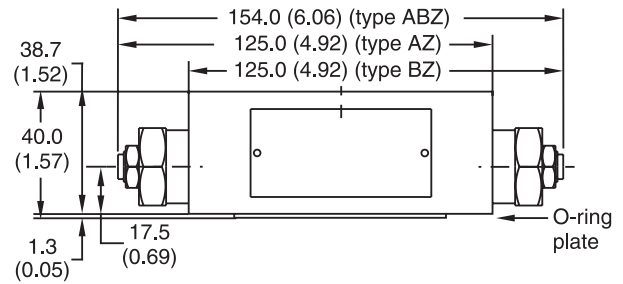
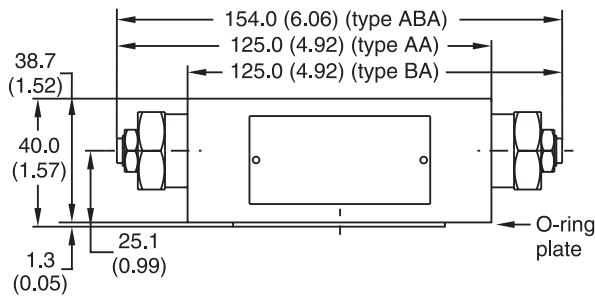
ZRD01

Inch equivalents for millimeter dimensions are shown in (**)



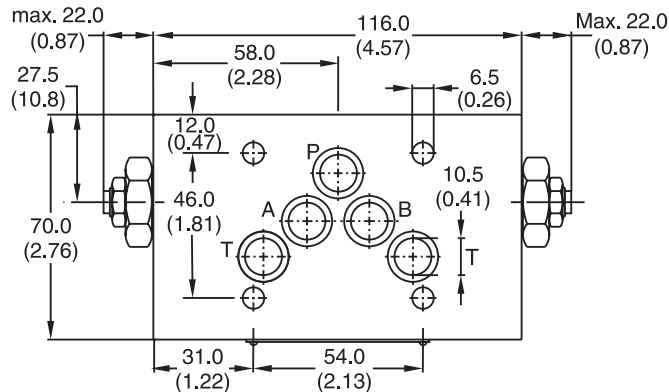
Seal Kit	
Seal	Order Code
1	098-91096-0
5	098-91097-0
Complete Cartridge	
Order Code	
098-91119-0	
O-ring Plate	
Order Code	
S26-27553-0	

B



ZRD02

Inch equivalents for millimeter dimensions are shown in (**)



Seal Kit	
Seal	Order Code
1	098-91098-0
5	098-91099-0
Complete Cartridge	
Order Code	
098-91120-0	
O-ring Plate	
Order Code	
S16-85742-0	

