

Parker Series ZRE Pilot Operated Check Valve Service Manual

Pilot operated check valves series ZRE are designed for maximum flow rates and long life time.

The valves are typically used in combination with spool type directional control valves to ensure nearly leak free positioning of the actuator.

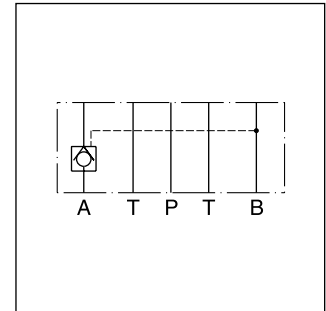
The inlet flow is free while the outlet flow is blocked. Pressure in the inlet line opens the check valve and allows free outlet flow.

Features

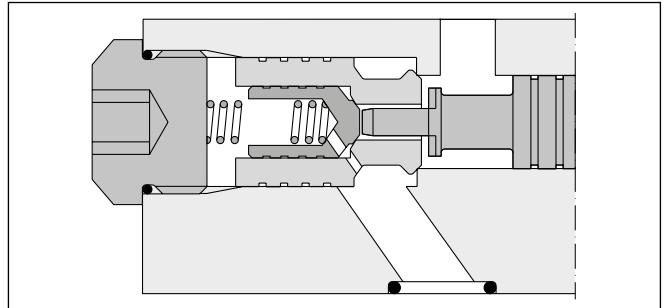
- High flow capacity
- High life time
- Check function in A, B or A + B
- ZRE01 - NG06 (CETOP 03)
- ZRE02 - NG10 (CETOP 05)



ZRE-B01



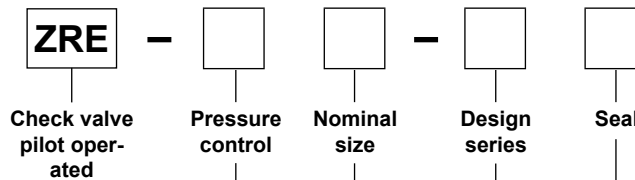
ZRE-A02



ZRE-A02

Ordering code

7



Code	Pressure control
A	Blocked in A
B	Blocked in B
AB	Blocked in A and B

Code	Nominal size
01	NG06
02	NG10

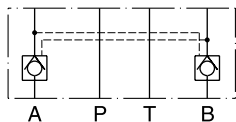
Code	Seal
1	NBR
5	FPM

Code	Design series
D	NG06
E	NG10

Ordering code details

ZRE*01

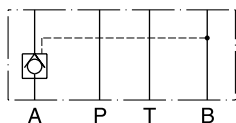
blocked in A and B



Series ZRE-AB01-D1

Order No. 098-91020-0

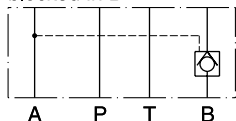
blocked in A



Series ZRE-A01-D1

Order No. 098-91018-0

blocked in B

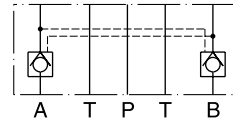


Series ZRE-B01-D1

Order No. 098-91019-0

ZRE*02

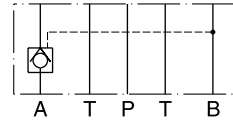
blocked in A and B



Series ZRE-AB02-E1

Order No. 098-91300-0

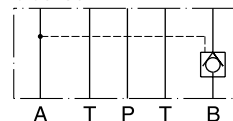
blocked in A



Series ZRE-A02-E1

Order No. 098-91298-0

blocked in B



Series ZRE-B02-E1

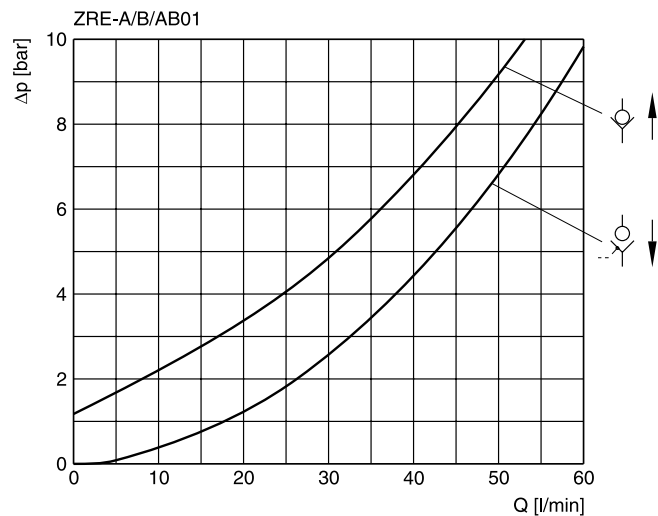
Order No. 098-91304-0

Technical data

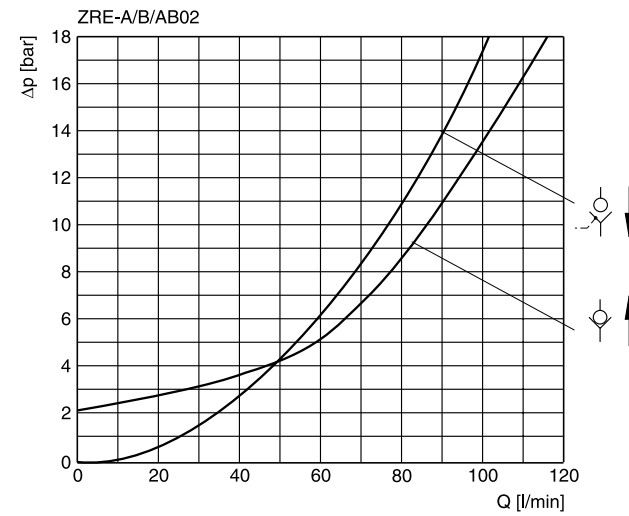
General			
Size		NG06	NG10
Mounting interface		DIN 24340 A6 ISO 4401 NFA D03	DIN 24340 A10 ISO 4401 NFA D05
		CETOP RP 121	
Mounting position		unrestricted	
Ambient temperature	[°C]	-20...+60	
MTTF _D value	[years]	150	
Weight	[kg]	1.2	3.1
Hydraulic			
Max. operating pressure	[bar]	up to 350	315
Nominal flow	[l/min]	60	120
Opening ratio (pilot cone / main cone)		1:6	1:6
Opening pressure	[bar]	1.2	2.0
Leakage		on request	
Fluid		Hydraulic oil according to DIN 51524	
Fluid temperature	[°C]	-20...+70 (NBR: -25...+70)	
Viscosity	permitted	[cSt] / [mm ² /s] 20 ... 400	
	recommended	[cSt] / [mm ² /s] 30 ... 80	
Filtration		ISO 4406 (1999); 18/16/13	

p/Q performance curves

ZRE*01



ZRE*02

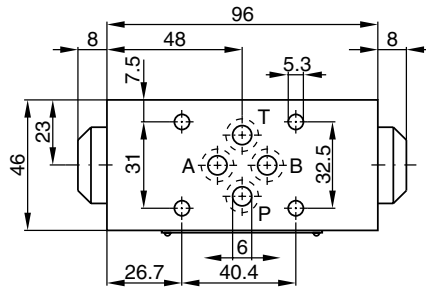


All characteristic curves measured with HLP46 at 50 °C.

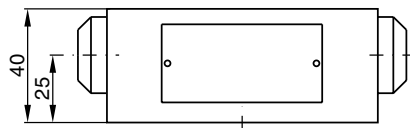
Dimensions

Dimensions

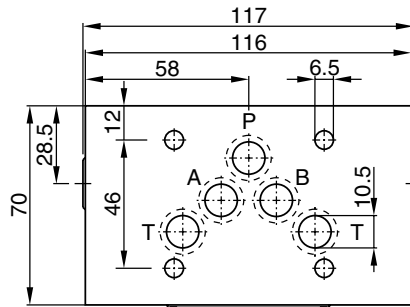
ZRE*01



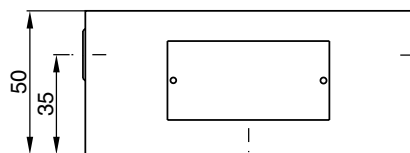
Seal kit	
Seal	Order code
1	098-91088-0
5	098-91089-0



ZRE*02



Seal kit	
Seal	Order code
1	098-91090-0
5	098-91091-0



7

